

# 2022 International Postgraduate

COURSE GUIDE



*This is free thinking*



When you're

# thinking for yourself

there's no limit  
to what you  
might achieve.

## 2022 Academic calendar

SEMESTER MODE	
21st - 25th February	Semester 1 O-Week
28th February	Semester 1 starts
11th - 25th June	Semester 1 exam period
25th - 29th July	Semester 2 O-Week
1st August	Semester 2 starts
12th - 26th November	Semester 2 exam period

TRIMESTER MODE	
17th January	Trimester 1
16th - 23rd April	Trimester 1 exam period
9th May	Trimester 2
6th - 13th August	Trimester 2 exam period
29th August	Trimester 3
26th Nov - 3rd December	Trimester 3 exam period



# Contents

Welcome to Murdoch	02
The Murdoch difference	04
Why you'll love Perth	06
Explore WA	08
Our location	10
Explore our campuses	12
Real-world learning	14
Student life	16
A place to live	18
Our research	20
Choose the postgraduate path that suits you	22
Postgraduate courses	24
Scholarships	48
Study abroad and exchange	50
Student support	52
Pathways to Murdoch	54
Entry requirements	56
Join us	58
Accepting your offer	60

## COURSES

<b>Agricultural, Environmental and Conservation Sciences</b>	<b>26</b>
<b>Business, Leadership and Communication</b>	<b>29</b>
<b>Education and Teaching</b>	<b>32</b>
<b>Engineering and Energy</b>	<b>34</b>
<b>Health Industries and Leadership</b>	<b>37</b>
<b>Information Technology</b>	<b>40</b>
<b>International Policy and Development</b>	<b>42</b>
<b>Law, Criminology and Forensic Science</b>	<b>44</b>
<b>Veterinary Medicine</b>	<b>46</b>



### Acknowledgement of Country

Murdoch University acknowledges the Whadjuk people of the Noongar nation as the traditional custodians of this country and its waters and that Murdoch University stands on Noongar Country.

Murdoch University pays its respects to Noongar elders past and present and acknowledges their wisdom and advice in teaching and cultural knowledge activities.



# Welcome to **Murdoch**



## A welcome to all prospective students from our Vice Chancellor

I am delighted that you are considering studying at Murdoch University for the next stage of your educational journey.

Murdoch University is renowned for its “free thinking” ethos. We actively encourage creativity and critical thinking in all our students because we know these are skills for life that are highly valued by employers and make a positive difference to our community.

We also recognise that the world is a complex and ever-changing place. Because of this, we stand by all our students and provide support and guidance, no matter what challenges come their way.

Our students join a strong, caring and diverse community which places excellence in teaching, learning and research at the heart of all we do.

The most recent Good Universities Guide found we continue to deliver outstanding results, with five-star ratings in the areas of overall student experience, student support, teaching quality and student-to-staff ratios.

I am truly delighted to present our 2022 international postgraduate guide to you and I invite you to explore the many excellent study options open to you at Murdoch.

We are proud of our constantly-expanding global community of pioneering minds and we would love you to join us.

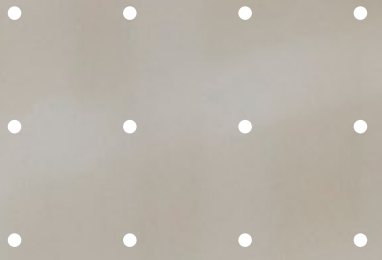
**EEVA LEINONEN**  
VICE CHANCELLOR  
MURDOCH UNIVERSITY













# The Murdoch difference

Ask anyone who's studied here:  
there's something special **about Murdoch.**

Murdoch is a place where you can be yourself and be appreciated for who you truly are. It's the kind of place where the lecturers know you by name, and down-to-earth students wave to you across the lawns of Bush Court. We are honoured to welcome staff and students who come from all walks of life.

Whether you want to change the whole world, some of the world, or just your world, our extensive range of courses and hands-on learning facilities will equip you with the skills you need. But the most important thing you'll learn here? To think freely, and to think for yourself.

We don't follow the crowd, and neither do our students. Thousands of free-thinking students have graduated from Murdoch and made their mark on the world. When you're thinking for yourself, there's no limit to what you might achieve.

Free thinking has always been at the heart of Murdoch and continues to steer us towards activities that truly matter. We're different, and we're proud of it.

**Welcome to our  
vibrant community.**



**5 star rating**

for student support

GOOD UNIVERSITIES GUIDE 2021



**3 international  
locations**

Dubai, Myanmar and Singapore



**Ranked in the top 10**

universities in Australia for Politics  
and International Studies

THE RANKINGS BY SUBJECT 2020



**Ranked in the top 100**

universities in the world under 50 years of age

TIMES HIGHER EDUCATION,  
YOUNG UNIVERSITY RANKINGS 2020



**2 Australian  
locations**

Perth and Mandurah



**Excellence in research**

Highest possible ranking for research in Physical Chemistry,  
Environmental Science and Management, Zoology, Agricultural  
Biotechnology, Clinical Sciences, and Medical Microbiology

EXCELLENCE IN RESEARCH FOR AUSTRALIA (ERA)  
2018 AUSTRALIA RESEARCH COUNCIL

A photograph of two young women, one with blonde hair and one with dark hair, both smiling and looking towards the right. They are standing in front of a city skyline with a prominent blue building. The text 'Why you'll love Perth' is overlaid on the image, with 'Why you'll' in white and 'love Perth' in red.

# Why you'll love Perth

**Consistently ranked in the top 10 cities in the world, the capital of Western Australia, Perth, is a prosperous and thriving city based on the shores of the Swan River.**

Making the most of the warm, dry summers and cool, wet winters, Perth residents have everything they need with a large shopping district offering a cosmopolitan mix of cafes, restaurants, pubs and thriving nightlife.

The sunniest capital city in Australia, Perth is a cultural hub of activity, social events and weekend getaways. Known for the friendly locals who call Perth home, the city provides a welcoming and safe environment for international students and their families.

## **REGIONAL CITY STATUS**

As a newly designated regional city, Perth can now help international students prosper after they complete their studies.

International students who graduate from a Western Australian university now have access to an additional year in Australia on a post-study work visa.

## **ROTTNEST ISLAND**

Just 20km off the coast of Perth, Rottnest Island is the perfect destination for a day away from study or a longer island vacation.

## **FREMANTLE**

The historic port-city of Fremantle is renowned for its laid-back attitude, vibrant cappuccino strip and internationally acclaimed cafes and restaurants.

## **COTTESLOE BEACH**

Boasting over a kilometre of pristine white sand and turquoise water, Cottesloe Beach is one of Perth's most popular beach destinations.

## **ELIZABETH QUAY**

An exciting new waterfront precinct on the banks of the Swan River, Elizabeth Quay is a vibrant destination with activities for people of all ages. It features the BHP Water Park, public artwork, a range of world-class bars and restaurants.





Optus Stadium



Rottnest Island

## OPTUS STADIUM

With 60,000 seats and a fans-first approach in design and technology, it's no surprise Optus Stadium was awarded World's Best Stadium Project for 2018.

## WACA

Murdoch is proud to be the first tertiary education provider to partner with the Western Australian Cricket Association (WACA) to benefit both our students and the community.

## RAC ARENA

Murdoch is a proud partner of RAC Arena, widely regarded as one of Australia's finest venues and voted Australia's Best Indoor Stadium for 2018.

## KINGS PARK

Kings Park is a must-see destination offering over 3,000 species of the state's unique flora, breathtaking views over Perth City and the Swan River, and a range of hiking trails.

## SWAN VALLEY

Just 25 minutes from Perth, the Swan Valley is home to world-class wineries, breweries, distilleries, countless gourmet artisan goods, handcrafted wares, bustling markets, vibrant studios, top-notch eateries and endless experiences.



**Perth is the #1 most affordable capital city in Australia**

THE ECONOMIST INTELLIGENCE UNIT,  
WORLDWIDE COST OF LIVING SURVEY 2019



**Perth is ranked in the top 30 cities in the world for best student mix**

AUSTRALIAN BUREAU OF STATISTICS, 2016 CENSUS  
OF POPULATION AND HOUSING – CULTURAL  
DIVERSITY AUSTRALIA



**Student Visa holders can work part-time**

(up to 40 hours per fortnight)  
during semester and full-time during  
semester breaks

## The sunny city:

Perth enjoys a Mediterranean climate with average highs of 31°C in summer and 18°C in winter



## Perth City



- Access to an additional year on the 2 year post-study work visa\*
- 40% off public transport
- Average rent \$1,000/month

**Vs**

## Sydney (Major City)

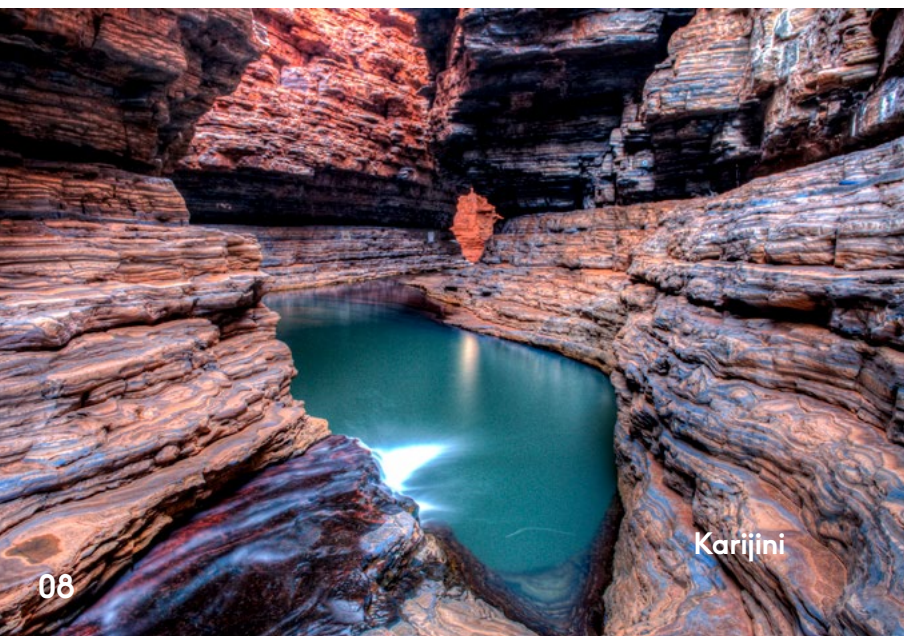


- Access to 2 year post-study work visa
- Higher average hourly commute times
- Average rent \$1,900/month
- Average rent prices are 80% higher than Perth

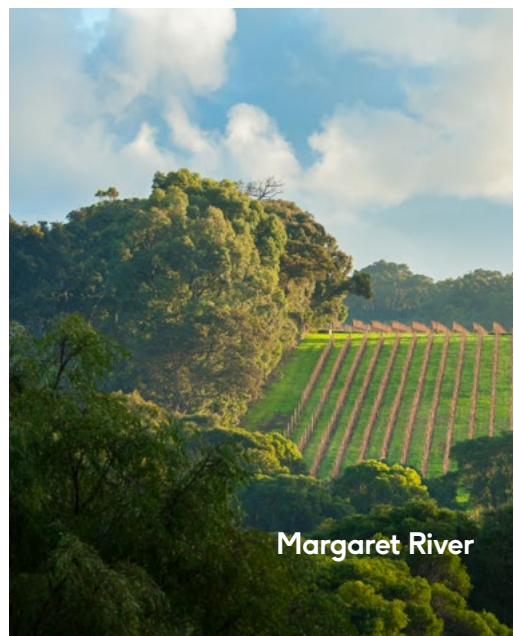
\*Eligible international students can apply for a post-study work stream visa (temporary graduate visa, subclass 485). This visa is usually between 2 and 4 years, depending on your qualification (Hong Kong passport holders may stay for 5 years). Perth's category 2 regional status means that eligible international students who studied and graduated from Murdoch, and lived in Perth whilst holding their post-study work stream visa can apply for a second post-study work stream visa to stay for an additional 1 year.



# Explore WA



Karijini



Margaret River







Ningaloo Reef



Broome

## Western Australia is the ideal destination for both tourists and students and is the perfect place to begin your Aussie adventure.

### MARGARET RIVER AND THE SOUTH WEST

Ranked as the Lonely Planet's number one destination in the Asia Pacific region, the area is a natural playground with pristine forests, beaches and world-class restaurants and wineries.

### SHARK BAY AND MONKEY MIA

Famous for its wild dolphin experience, Monkey Mia is surrounded by rusty red sand dunes, white sandy beaches and water teeming with sealife. With blue skies and sunshine almost every day of the year, Monkey Mia and Shark Bay are ideal destinations for you to sit back and relax.

### THE PINK LAKES (HUTT LAGOON)

The pink lake that has to be seen to be believed, Hutt Lagoon covers a whopping 70 square kilometres and tends to be at its pinkest in the mornings, changing character and colour according to the weather and the seasons.

### NINGALOO REEF

More easily accessible than the Great Barrier Reef, and home to as many as 500 species of tropical fish and coral, the Ningaloo Reef spans 260 kilometres in length and runs alongside white sandy beaches and turquoise waters. Teeming with marine animals such as turtles, manta rays, dolphins and humpback whales, the Ningaloo Reef is also home to the migratory gentle giant, the whale shark.

### BROOME

Broome is a beach resort town in Western Australia's Kimberley region. Along the Indian Ocean coastline, the white sands of 22km-long Cable Beach offer a dramatic backdrop for sunset camel rides. Nearby, dinosaur

tracks are revealed during low tide, while Roebuck Bay provides visitors with a chance to explore Broome's famous pearl farms.

### KARIJINI

With over two billion years of the earth's natural history lying in wait, Karijini has been largely untouched by humankind and offers a pristine and unique look into Western Australia's heartland. In this remote location, you will get to descend into ancient gorges, scale some of the oldest rocks on the planet, paddle in crystal-clear waterways and cool off with a swim beneath the various cascading waterfalls.

### Perth: gateway to the world



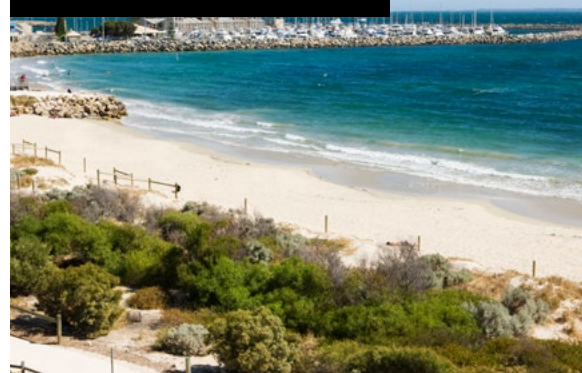
Perth shares one of the most populated time zones in the world, and is connected to Asia and the rest of the world by a number of airlines.

- ↗ Beijing (12 hrs)
- ↖ London (17 hrs)
- Sydney (4 hrs)
- Melbourne (3.5 hrs)
- ↑ Bali (3.5 hrs)
- ↖ Bangkok (7 hrs)
- ↖ Singapore (5 hrs)
- ↖ Jakarta (4.5 hrs)
- ↖ Kuala Lumpur (5.5 hrs)
- ↑ Hong Kong (8 hrs)
- ↖ Dubai (11 hrs)
- ← Johannesburg (20 hrs)
- ↖ Europe (21 hrs)
- ↗ USA (22 hrs)



# Our location

FREMANTLE  
(8KM WEST OF MURDOCH)



12 SWAN RIVER



11 LOCAL SHOPPING CENTRES



10 MURDOCH UNIVERSITY VILLAGE  
(ON-CAMPUS ACCOMMODATION)



9 MURDOCH RESIDENTIAL DISTRICT  
(OFF-CAMPUS ACCOMMODATION)



8 MURDOCH UNIVERSITY SPORTS PAVILION AND PLAYING FIELDS



7 REGIONAL PARKS







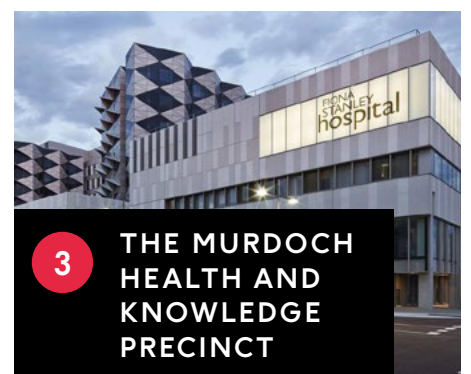
**1** PERTH CBD  
(14KM NORTH OF MURDOCH)



**Murdoch University  
Perth campus**



**2** KWINANA  
FREEWAY



**3** THE MURDOCH  
HEALTH AND  
KNOWLEDGE  
PRECINCT



**4** MURDOCH  
STATION



**6** MURDOCH UNIVERSITY  
RESEARCH INSTITUTES



**5** MURDOCH'S  
ON-CAMPUS FARM





# Explore our campuses



Our Perth campus features more than 227 hectares of beautiful native bushland, specialised educational and recreational facilities and a range of essential support services. The campus is home to state-of-the-art teaching and learning facilities, a welcoming student residential village, and it offers a unique student experience.



## HOW TO GET TO OUR PERTH CAMPUS



Just 15 minutes from the city to Murdoch train station, then a quick trip by connecting bus to campus, or a 10 minute walk



Regular bus services past campus



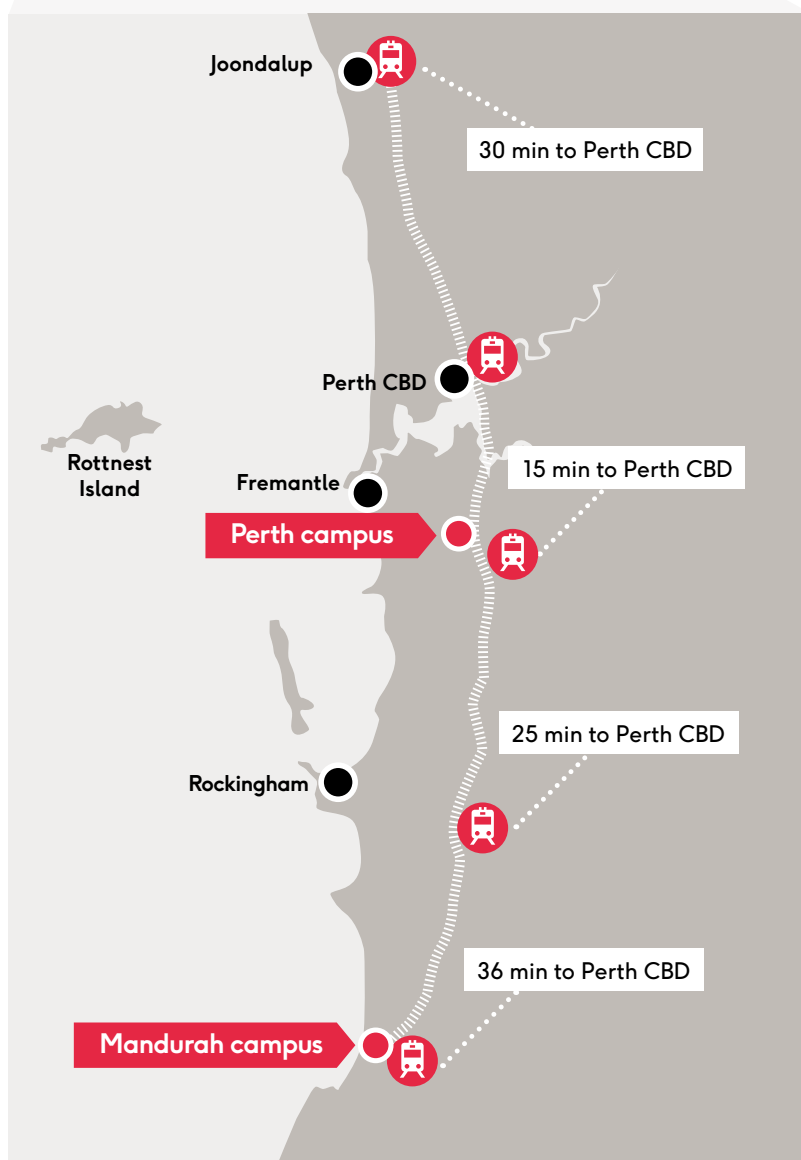
15 minutes from the city on Kwinana Freeway (exit South Street). There are almost 4,000 car park spaces available, so you'll always have access to parking



Excellent cycle routes to campus with secure bike storage available

## MANDURAH CAMPUS

Set in the heart of a coastal town, our Mandurah campus offers clinical, academic and research expertise and state-of-the-art facilities. The campus specialises in health courses, including a nursing school with demonstration wards providing a real-life learning environment.





# Real-world learning





## To truly let your imagination run free, you need an environment that supports your creativity.

You need an environment that allows you to explore the pressing issues of today, so you can find the ground-breaking answers of tomorrow. To offer this, Murdoch has built a contemporary network of real-world learning environments. This collection of facilities, laboratories and simulation suites provides you with all the resources and practical experiences you need to graduate career-ready.

### CHIROPRACTIC CLINIC

As a Chiropractic student, you'll learn to treat patients in our on-campus chiropractic clinic, which houses a rehabilitation centre, physiological therapeutics facility, consulting rooms and a digital radiographic suite.

### ENGINEERING PILOT PLANT

Our nationally renowned Bayer Pilot Plant is where our Electrical Engineering students learn real-world skills. This engineer's playground is one of only a few in Australia and the only one of its kind in Western Australia.

### IT INNOVATION HUB

Fitted out with the latest mixed and augmented reality equipment, industry-scale data centre and high-performance computing capabilities, our IT Innovation Hub is a cutting-edge teaching, learning and research facility, specially designed for IT students.

### LAUNCHPAD

Launchpad is a place for students and industry to come together to solve challenges, create opportunities, take advantage of cutting-edge facilities such as 3D printers and collaboration spaces, and get professional consulting advice.

### SPORTS SCIENCE FACILITY

Our sports science facility houses a dedicated exercise physiology laboratory, complete with a climate and altitude chamber, plus a performance laboratory with motion capture system and running track. It also includes a rehabilitation, strength and conditioning laboratory, complete with fully equipped gym with Olympic lifting facilities. It is also home to a Mind and Body Lab with a fitness testing area and a DEXA machine.

### SIMLAB™

Murdoch is proud to be the first university in Australia to offer SimLab™ technology, an immersive platform that gives students the opportunity to experience, practise and improve their teaching techniques in a safe learning environment.

### LAW MOOT COURT

In our Herbert Smith Freehills Moot Court, you will have the opportunity to try hypothetical cases in a courtroom environment, develop advocacy and mooting skills, and compete against other law schools from around the world.

### MEDIA ARTS CENTRE

As a Creative Arts or Communications student, you'll get to experience our sound stage, television and radio studios, digital post-production facilities, sound-mixing studios, digital and creation workplaces, and professional video and editing suites.

### MURDOCH PSYCHOLOGY CLINIC

If your goal is to become a registered psychologist, you'll need to study an undergraduate degree in psychology and then continue your studies at postgraduate level. At postgraduate level, you may have the opportunity to work with real clients at our on-campus psychology clinic.

### NEXUS THEATRE

Equipped with world-class facilities, Nexus Theatre has been providing students, staff and the Murdoch community, for the past 27 years, with a modern teaching and performance space to enjoy. The venue hosts concerts, theatrical events and cultural evenings and has been home to some of WA's best emerging talent.

### NURSING SIMULATION SUITES

From your first week as a Murdoch nursing student you will have the opportunity to experience our state-of-the-art Nursing Simulation Suites at both our Mandurah and Perth campuses. These clinical suites house fully equipped clinical teaching wards, treatment areas and simulation suites. You'll practise your skills on lifelike, high-tech mannequins with heart, lung and digestive sounds, and other realistic features.

### THE ANIMAL HOSPITAL AND WORKING FARMS

Our Perth campus is home to a working farm, a veterinary clinic, a fully equipped Veterinary Hospital complete with cancer and dermatology clinics, a Pet Emergency Centre and our Equine Centre with equine operating theatres.





# Student life





**10 food  
outlets**



**6 coffee  
shops**



**The  
Tavern**



**IGA X-Press  
store**

## **Murdoch is about more than just learning – it's also about getting involved, having fun and making lifelong friends.**

You'll kick off your Murdoch journey at orientation week (O-week). O-Week is a great opportunity to finalise your enrolment and sign up to classes, meet your lecturers, organise your student ID card, go on campus tours and visit the Murdoch Bookshop for your last-minute stationery needs. You'll discover Bush Court (the heart of our campus), experience our \$20m Student Hub and venture through the Geoffrey Bolton Library.

### **STUDENT HUB**

The Student Hub at our Perth campus is a flexible space where you can indulge in yummy food, socialise and co-work.

### **JOIN THE CLUB**

There are over 130 clubs and societies on campus for you to join.

### **ESPORTS GAMING HUB**

Visit our new Esports Gaming Hub equipped with 12 state-of-the-art Alienware Gaming computers.

### **WORSHIP CENTRE**

Based at our Perth campus, our multi-faith Worship Centre offers services and guidance for everyone.

### **KEEP ACTIVE**

Join a social sports team or the on-campus fitness centre with discounted memberships for students.

### **EXPERIENCE MURDOCH**

Get involved in campus events like Festival Day, Stress Less Week, weekly Marketdaze stalls and themed tavern events.

## **STUDENT GUILD**

Run by students, for students, the Murdoch Student Guild runs social events and a heap of extracurricular activities.



## **Staying safe**

To help you become better accustomed to Perth life, Murdoch has two apps to help you stay safe both on and off campus.

### **ON-CAMPUS SAFETY: MURDOCHSAFE APP**

MurdochSafe is the official safety and emergency app of Murdoch University, giving you fast access to vital safety and emergency services on and off campus.

**To find out more, visit:**

**[murdoch.edu.au/  
murdochsafe](https://murdoch.edu.au/murdochsafe)**

### **OFF-CAMPUS SAFETY: SONDER APP**

If you're feeling unsafe, lost or stranded, ill or injured off-campus, the Sonder mobile app can immediately connect you with a professionally-trained specialist, who will assist you over live chat, on the phone or in-person.

**To find out more, visit:**

**[murdoch.edu.au/sonder](https://murdoch.edu.au/sonder)**



# A place to live

## THE VILLAGE

If you want to be in the centre of all the on-campus action, you cannot go past life at the Murdoch University Village. The Village has stylish, fully furnished apartments available for rent, with options to suit almost any budget. The Village offers a range of facilities, including:

- Swimming pool
- Pool lounge with a pool table, table tennis and foosball table
- Rec room with barbecues, projection screen and a communal kitchen
- Beach volleyball and basketball courts
- Theatre room with surround sound and projector
- Movie room with satellite TV
- Group study rooms

The Village offers 24-hour staff presence, with resident staff members living on-site and night-time security patrols. There is a team of resident assistants responsible for organising events, assisting new students with their transition into communal living and ensuring adherence to Village rules. Staff also provide support to residents experiencing personal or study problems.

To see all residential rates and accommodation options visit [campuslivingvillages.com/australia/perth/murdoch-university-village](http://campuslivingvillages.com/australia/perth/murdoch-university-village)

Email: [info@murdochuv.com.au](mailto:info@murdochuv.com.au)

## OFF-CAMPUS ACCOMMODATION

### Share houses

Like many students, you may wish to share a house with other students in a local Perth suburb, or you may choose privately rented accommodation. Depending on your lifestyle, you may choose to rent a single room from a house that is occupied by several other people or, alternatively, you can take on an entire lease for a single property yourself.

In a share house, you will have your own room, but amenities such as kitchens and bathrooms will generally be shared with your housemates. Students living together in shared accommodation will often have rules for inviting guests over. They will share the payment of utilities and the usage and clean-up of common areas. Shared accommodation is a great option if you're not wanting to live by yourself and are wanting to make friends with both local and international students and non-students.

The Murdoch Student Guild has an accommodation database that lists rooms available for rent

[murdoch.studystays.com.au](http://murdoch.studystays.com.au)

Alternatively, the Real Estate Institute of Western Australia also lists available rentals around Perth [reiwa.com.au/rent](http://reiwa.com.au/rent)

### Live with an Australian family

If you're coming to Australia from overseas and would like to experience life as part of an Australian family, you can apply for homestay accommodation. You will:

- Be collected from the airport by your host family when you first arrive.
- Improve your English language skills by interacting with your host family.
- Enjoy the local community and culture with advice from local experts.
- Meet new people and attend social events.
- Benefit from support and advice provided by your host family.

Learn more about homestay accommodation by visiting [homestaynetwork.org](http://homestaynetwork.org)

To find out more about the range of accommodation options available at Murdoch, visit

[murdoch.edu.au/accommodationoptions](http://murdoch.edu.au/accommodationoptions)





## COST OF LIVING

### Calculating your total cost of study

Your total cost of studying in Australia will include:

- Tuition fees
- Visa application fees
- Overseas Student Health Cover (OSHC)
- Flights
- Cost of living
- Other personal expenses
- Books and university expenses (Student Services and Administration Fees)

As a general guide, you should budget approximately AU\$500 per week for your living expenses in Perth as a single, or AU\$900 for a family of four.

Item	On-campus accommodation (cost per week)	Share house off-campus (cost per week)	Homestay off-campus (cost per week)
<b>Rent</b>	\$157 - \$390	\$165 - \$300	\$235 - \$325
<b>Food</b>	\$80 - \$150	\$80 - \$150	Included
<b>Transport to University</b>	Walking distance	\$20 - \$45	\$20 - \$45
<b>Electricity and gas</b>	Included	\$35	Included
<b>Internet</b>	Included	\$10 - \$20	\$10 - \$20
<b>Mobile phone</b>	\$15	\$15	\$15

*\* Pricing is correct at time of printing and is subject to change without notice.*



# Our research

**From its inception, Murdoch has been a research-led university with a reputation for world class research.**

Our researchers focus on the significant social and scientific challenges of our time, including climate change, environmental sustainability and adaptation, food, water and biosecurity, as well as human and animal health and welfare. By working often with key corporate, academic and government partners, we ensure our research is underpinned by a deep understanding of politics, governance and international affairs. This helps translate outcomes into impact.

## **OUR CHANGING CAMPUS**

In the heart of a vibrant region, our Perth campus will play a key role in the new mixed-use development known as The Murdoch Health and Knowledge Precinct.

Taking advantage of our central location, the Health and Knowledge Precinct will encompass existing facilities in the area, including Fiona Stanley and St John of God Hospitals, PathWest South, Harry Perkins Institute for Medical Research South, Centre for Immunology and Infectious Diseases, WA Centre for Thrombosis and Haemostasis, the Murdoch Animal Hospital, State Agricultural Biotechnology Centre and the Advanced Mass Spectrometry Facility.

Our campus is changing to strengthen our connections with our landscape, community and our core purpose of high-quality teaching and research.

## **FOOD FUTURES INSTITUTE**

The Food Futures Institute promotes sustainable use of our limited land and water resources to economically and ethically improve food, forestry and fibre production.

To find out more, visit  
[murdoch.edu.au/research/ffi](http://murdoch.edu.au/research/ffi)

## **HARRY BUTLER INSTITUTE**

Partnered with global energy producer Chevron, The Harry Butler Institute champions a research space where community, business and biodiversity can co-exist, and where efforts integrate and balance the needs and aspirations of all three sectors.

To find out more, visit  
[murdoch.edu.au/research/hbi](http://murdoch.edu.au/research/hbi)

## **HEALTH FUTURES INSTITUTE**

The Health and Knowledge Precinct developing in and around our Perth campus provides unique research opportunities supporting our activities in health, biomedicine, bioinformatics and other fields including health education, communication and health sector management policy.

To find out more, visit  
[murdoch.edu.au/research/hfi](http://murdoch.edu.au/research/hfi)

To find out more, visit  
[murdoch.edu.au/research](http://murdoch.edu.au/research)







# Choose the **postgraduate** **path** that suits you

For some, curious minds cannot be contained – they set out to discover the undiscoverable, to question the unquestionable, and to solve the unsolvable. At Murdoch, we not only encourage these pioneering minds to explore the big questions, but to find the even bigger solutions.

## Postgraduate study by coursework

With a range of graduate certificate, graduate diploma and masters degree courses on offer, you'll find a postgraduate option to suit you. Many of our postgraduate degrees are available 100% online, which means you can study when and where you like.

### GRADUATE CERTIFICATE

You may have started your career and are now looking to take on a leadership role or level-up in your skillset. Or you may be interested in pivoting your career or obtaining in-depth knowledge in a field of your interest. Whatever the reason, a graduate certificate is the ideal introduction to postgraduate study and is often made up of four units over one semester full-time, or part-time equivalent.

### GRADUATE DIPLOMA

Are you ready to further expand on the knowledge you've gained in your chosen area of study and achieve career goals? A graduate diploma is more in-depth than a graduate certificate, consisting of up to eight units over one year full-time, or part-time equivalent. You'll leave with advanced skills and knowledge in an area of choice.

### MASTERS DEGREE

This qualification will not only enhance your specialist theoretical and applied knowledge, but you'll also extend your higher-order skills in independent thinking and critical evaluation. Generally, a masters degree will take one to two years to complete full-time, or part-time equivalent.

## Postgraduate study by research

Both academics and students are encouraged to challenge the norms and think for themselves to deliver outcomes that make a difference to the community. You'll benefit from high-tech laboratories, workshops, clinics and specialist facilities where you can conduct meaningful research, explore thought-provoking theories and produce significant breakthroughs.

### BY STUDYING A RESEARCH DEGREE AT MURDOCH, YOU WILL:

#### Become an expert

Postgraduate studies offer the ability to become a skilled researcher in your field of choice. You'll not only be rewarded with opportunities and personal enjoyment, as you get to explore your passion, but you will gain a skillset that enables you to contribute to your chosen field.

#### Expand professional networks

Network with leading academics, join an association or group, talk to your peers or volunteer.

There are plenty of opportunities at Murdoch for you to develop relationships and build the connections vital to your career.

#### Personal development

Improved personal development skills are important for you to push past your limits and challenge yourself. As a Murdoch postgraduate student you'll have access to modern facilities and invested staff, as you strengthen your skills, improve on your capabilities and maximise your potential. You'll also get the support to undertake independent study, employ different research methods, or expand upon research as you help find solutions to global challenges.

#### Work with world-leading researchers

Throughout your studies, you'll learn from world-leading researchers who are there to offer one-to-one support. They'll not only teach you the theoretical knowledge, and intensive research skills, but you'll also learn to think for yourself and develop critical skills required for the future of work.

#### Increase your career opportunities

You may be stuck at a crossroad now, but studying a research degree will open the door to new opportunities and the chance to control the pathway of your career. Upon finishing your masters degree, you'll be presented with new and exciting possibilities in research, education, business and more.

#### Solve real-world problems

Discover new methods and innovative techniques to make a difference in your community. This is your opportunity to use your unique ideas to solve local and global priorities and find answers to unresolved questions.

### PURSUE POSTGRADUATE STUDY BY RESEARCH THROUGH A MASTERS DEGREE, DOCTORATE OR PhD

#### Masters degree by research

A masters degree by research is an advanced postgraduate qualification that enables you to undertake an in-depth investigation into a specific academic discipline of your choice. This degree is awarded following the completion of a major thesis involving independent original research, under the supervision of a senior academic.

#### Doctorate or PhD

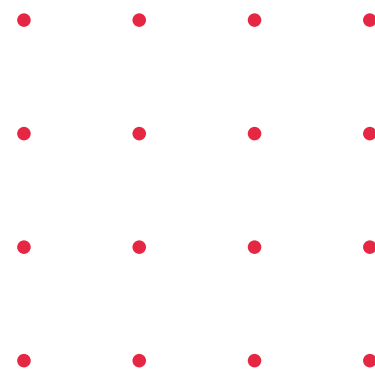
A doctorate is a program of research and advanced study that may enable you to make a significant contribution to knowledge and practice in your professional context. You may also contribute more generally to scholarship within your discipline or field of study. Most doctorates involve independent researching of a specific topic under the guidance of a supervisor, leading to a thesis or research project.



# Postgraduate **courses**







## Our forward-thinking students are answering tomorrow's questions, today. Are you ready to join them?

Murdoch provides everything you would expect from a world-class university, including leading academics, world-changing research, excellent facilities and a wide range of courses.

We believe that creativity powers change and strive to be the place where new ways of thinking can be found. We won't tell you what to think—instead we give you the support, skills and opportunities to forge your own path.

Murdoch provides an innovative and welcoming learning environment where you'll be surrounded by some of the world's most progressive thinkers. These are people who are not just challenging conventional wisdom and tackling the world's big questions, but also finding answers.

Over the next section of this guide, explore all of our Murdoch courses, find out about entry requirements and discover what careers you can pursue.

To find out more, visit  
[murdoch.edu.au/courses](https://murdoch.edu.au/courses)



# Agricultural, Environmental and Conservation Sciences



QUALIFICATION/ MAJORS	CRICOS CODE	COURSE CODE	INTAKE	DURATION (YEARS)	FEES (AUD)		ENTRY REQUIREMENTS
					2022 INDICATIVE FIRST YEAR FEE <sup>^</sup>	2022 INDICATIVE TOTAL COURSE FEE <sup>^</sup>	IELTS
<b>Graduate Certificate</b>							
Environmental Assessment and Management	089750D	C1118	Semester 1	0.5	\$16,680	\$16,680	Overall 6.0 with no band below 6.0
Energy and Carbon Studies	094589K	C1137	Semester 1 and 2	0.5	\$16,680	\$16,680	Overall 6.0 with no band below 6.0
<b>Graduate Diploma</b>							
Energy and Carbon Studies	094617M	G1079	Semester 1 and 2	1	\$33,360	\$33,360	Overall 6.0 with no band below 6.0
Energy and the Environment	034962B	G1062	Semester 1 and 2	1	\$33,360	\$33,360	Overall 6.0 with no band below 6.0
Environmental Science	002991F	G1053	Semester 1 and 2	1	\$33,360	\$33,360	Overall 6.0 with no band below 6.0
<b>Masters</b>							
Environmental Science	081028F	M1210	Semester 1 and 2	1	\$33,360	\$33,360	Overall 6.0 with no band below 6.0
Food Security	103444D	M1311	Semester 2	2	\$33,360	\$66,720	Overall 6.5 with no band less than 6.0
Renewable and Sustainable Energy	094590F	M1268	Semester 1 and 2	2	\$33,360	\$66,720	Overall 6.5 with no band less than 6.0
Sustainable Development	072141B	M1214	Semester 1 and 2	2	\$28,800	\$57,600	Overall 6.0 with no band below 6.0

<sup>^</sup>All fees were correct at the time of printing and are to be used as a guide only. Fees are subject to change without notice.



# Build a career managing and conserving the environment or help protect our global food supply.

Effectively managing human interactions with the environment requires a thorough understanding of the interrelationships between land, water, air, biota and people.

As an environmental or agricultural professional, you'll need a clear understanding of the procedures and skills involved in investigating complex environmental issues in a range of urban, mining, agriculture and aquatic settings.

Whether you're already working in the field of agriculture, environmental and conservation sciences, or are looking to switch careers, a postgraduate degree at Murdoch will prepare you to address environmental, conservation and agricultural challenges arising from how and where people now live.



## On-campus 'living labs'

Murdoch's expansive natural bushland supports native fauna allowing for onsite field labs.



## Australia's only campus-based farm

Gain the advantage of hands-on experience in soil science, crop science and pasture science



## Ranked in the top 15 universities in Australia

for agriculture and forestry

TIMES HIGHER EDUCATION RANKINGS BY SUBJECT 2019



# Agricultural, Environmental and Conservation Sciences continued

**Depending on your specialisation, when you graduate you'll be able to apply for membership to a range of professional bodies, including:**

- The Australian Entomological Society
- The Australasian Plant Pathology Society
- The Ecological Society of Australia
- The Australian Institute of Agricultural Science and Technology
- The Australian Society of Horticultural Sciences
- The Society for Risk Analysis
- Environment Institute of Australia and New Zealand
- The International Association for Impact Assessment
- Parks and Leisure Australia, the Australasian Land and Groundwater Association
- The Environmental Consultants Association
- The Ecological Society of Australia
- The Australian Marine Sciences Association
- Soil Science Australia
- The Australian Society for Freshwater Science
- The Australian Society of Plant Scientists
- The Australian Coastal Society



“ My Murdoch degree created exceptional opportunities for me to stand out among my peers, largely because of the combination of theoretical and practical training in a multicultural and dynamic environment. Food Security remains a top development priority in Sub Saharan Africa, and my masters degree from a prestigious Australian university set me up to be relevant in contributing towards the clear challenge of food security. ”

**SAMUEL OKANG-BOYE, GHANA**  
MASTER OF FOOD SECURITY

# Business, Leadership and Communication

**See the world in a different light as you develop an entrepreneurial mindset and the ability to think creatively.**

Turn your ideas into actions when you study a business, leadership or communication degree at Murdoch. Be inspired as you learn alongside academics who have forged their path to success, as you develop an entrepreneurial attitude, critical thinking and client consultation skills needed for the future of work.

You could follow in the footsteps of other Murdoch free thinkers: the CEO of a major international airline, a deputy prime minister or the CEO of an international advertising agency.



## 5 star rating

for student support  
for Business and Management  
GOOD UNIVERSITIES GUIDE 2021



## Connected to industry

We've worked with a range of  
corporate, not for profit and government  
organisations to create and continuously  
improve our courses



## Postgraduate Trimesters

Our business courses are now  
offered in trimesters and are designed  
with flexibility in mind



# Business, Leadership and Communication continued

Qualification/ Majors	CRICOS Code	Course Code	Intake	Duration (Years)	Fees (AUD)		Entry Requirements
					2022 Indicative First Year Fee^	2022 Indicative Total Course Fee^	IELTS
Graduate Certificate							
Business Administration	102593K	C1106	Trimester 1, 2 and 3	0.5	\$15,540	\$15,540	Overall 6.0 with no band below 6.0
Design Thinking	099051D	C1146	Semester 2	0.5	\$14,400	\$14,400	Overall 6.0 with no band below 6.0
Graduate Diploma							
Design Thinking and Service Innovation	099060C	G1084	Semester 1	1	\$28,800	\$28,800	Overall 6.0 with no band below 6.0
Human Resources Management	052856K	G1060	Trimester 1, 2 and 3	1	\$31,080	\$31,080	Overall 6.0 with no band below 6.0
Web Communication	085216C	G1071	Semester 1 and 2	1	\$28,800	\$28,800	Overall 6.0 with no band below 6.0
Masters							
Business Administration	089548F	M1256	Trimester 1, 2 and 3	1	\$31,080	\$46,620	Overall 6.0 with no band below 6.0
Business Administration (Global)	096880B	M1279	Trimester 1, 2 and 3	2	\$31,080	\$62,160	Overall 6.0 with no band below 6.0
Communication	096751M	M1277	Semester 1 and 2	2	\$28,800	\$57,600	Overall 6.0 with no band below 6.0
Development Studies	077165J	M1195	Semester 1 and 2 Trimester 2 and 3	2	\$28,800	\$57,600	Overall 6.0 with no band below 6.0
Human Resources Management	030207C	M1213	Trimester 1, 2 and 3	2	\$31,080	\$62,160	Overall 6.0 with no band below 6.0
Health Administration, Policy and Leadership	093385G	M1267	Trimester 1, 2 and 3	2	\$28,800	\$57,600	Overall 6.0 with no band below 6.0
International Affairs and Security	093074A	M1266	Semester 1 and 2 Trimester 2 and 3	2	\$28,800	\$57,600	Overall 6.0 with no band below 6.0
Professional Accounting	096792B	M1273	Trimester 1, 2 and 3	1	\$46,620	\$46,620	Overall 6.0 with no band below 6.0
Professional Accounting (Advanced)	057228J	M1274	Trimester 1, 2 and 3	2	\$31,080	\$62,160	Overall 6.0 with no band below 6.0
Public Policy and Management	077163M	M1194	Semester 1 and 2	2	\$28,800	\$57,600	Overall 6.0 with no band below 6.0
COMBINED DEGREES							
Masters							
Business Administration/ Human Resource Management	099356J	M1288	Trimester 1, 2 and 3	2	\$31,080	\$62,160	Overall 6.0 with no band below 6.0
Business Administration and Information Technology* <i>*Artificial Intelligence and Data Science Major only</i>	099394C	M1289	Trimester 1, 2 and 3	2	\$31,080	\$62,160	Overall 6.0 with no band below 6.0
Business Administration and Health Care Management	0100218	M1296	Trimester 1, 2 and 3	2	\$31,080	\$62,160	Overall 6.0 with no band below 6.0

<sup>^</sup>All fees were correct at the time of printing and are to be used as a guide only. Fees are subject to change without notice.



# Postgraduate **business degrees** offered in unique **trimester blocks**

## We're making it our business to rethink business education.

That's why we're offering postgraduate students the opportunity to complete their degree sooner through unique trimester blocks. Designed with flexibility in mind, our postgraduate business degrees will give you the competitive edge you're looking for and enable you to confidently take the next step in your business career.

Whether you choose to study in accelerated mode or take the full length of time to complete your degree, you will be offered a blend of theory and practical work, with a focus on real-world applicability and industry projects.





# Education and Teaching

## Are you ready to influence a whole generation of thinkers?

Whether you're a current teaching professional wanting to develop your expertise, or a professional within another field looking to gain an initial teaching qualification to launch a teaching career, at Murdoch you'll have the opportunity to inspire others to think for themselves, and to ignite a love of lifelong learning.

With a Murdoch postgraduate teaching degree, you could pursue a career as an early childhood educator, teach in primary and high schools, or become a teacher within international settings or the tertiary and adult education sector.

If this is your first step towards a teaching career you'll have the chance to experience, practise and improve your teaching techniques in our SimLab™ virtual classroom – the first of its kind in Australia.



### Graduate ready for the classroom

with an online portfolio to show your  
experience to future employers



### First university in Australia

to offer SimLab™ – a virtual  
classroom



### Top ranked

Ranked amongst the top universities  
in the world for our teaching courses

TIMES HIGHER EDUCATION WORLD  
UNIVERSITY RANKINGS 2020 BY SUBJECT:  
EDUCATION

QUALIFICATION/ MAJORS	CRICOS CODE	COURSE CODE	INTAKE	DURATION (YEARS)	FEES (AUD)		ENTRY REQUIREMENTS
					2022 INDICATIVE FIRST YEAR FEE^	2022 INDICATIVE TOTAL COURSE FEE^	IELTS
Graduate Certificate							
Education	103896J	C1153	Semester 1 and 2	0.5	\$14,400	\$14,400	Overall 6.5 with no band below 6.0
Graduate Diploma							
Education (Tertiary and Workplace)	093250A	G1025	Semester 1 and 2	1	\$28,800	\$28,800	Overall 6.0 with no band below 6.0
Masters							
Education (Research)	079341D	M1233	Semester 1 and 2	1.5	\$27,960	\$42,220	Overall 6.5 with no band below 6.0
Teaching (Primary)	093249E	M1230	Semester 1	2	\$28,800	\$57,600	Overall 7.5 with no band below 7.0 in reading and writing and 8.0 in speaking and listening
Teaching (Secondary)	098366D	M1284	Semester 1 and 2	2	\$28,800	\$57,600	Overall 7.5 with no band below 7.0 in reading and writing and 8.0 in speaking and listening
Doctorate							
Education	015132J	D1017	Semester 1 and 2	3	\$27,960	\$85,568	Overall 6.5 with no band below 6.0

<sup>^</sup>All fees were correct at the time of printing and are to be used as a guide only. Fees are subject to change without notice.

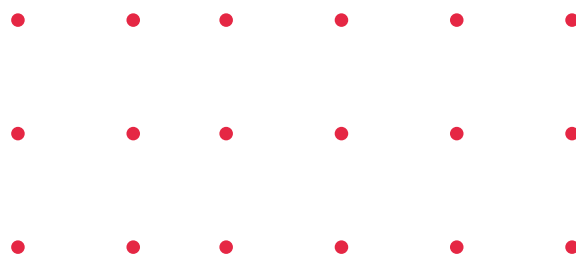
“ I am working and living in Vanuatu as a Technical Advisor to the Ministry of Education and Training. My role involves working with counterparts in the Curriculum Development unit to develop curriculum policy and materials. The work is challenging yet rewarding. Very few teachers have formal qualifications, students are spread across some 82 islands and the country has three official languages. Just over 113 vernaculars are also spoken in what is one of the most linguistically diverse nations on the earth in per capita terms. Doing this work has given me a refreshed lens with which to view western education systems. ”

**ALAN SWAN**  
MASTER OF EDUCATION





# Engineering and Energy



## Looking to develop your engineering career?

A Murdoch postgraduate degree in engineering and energy will provide you with the industry-relevant skills that are internationally recognised and in high demand.

Are you looking to build your skills and knowledge to help find the solution for climate change for our planet? Or are you interested in further investigating sustainable energy options for Australia?

Whether you're changing careers or looking at updating and enhancing your existing engineering qualifications, a Murdoch postgraduate degree in engineering and energy will provide you with the industry relevant skills for a professional career in the renewable energy industries.

You'll learn from our industry and academia experts who have research expertise in renewable energy system design and performance, energy efficient buildings and transport, sustainable energy development, climate change risk assessments, carbon neutral strategies and energy storage.

You will also get to take advantage of our teaching and research facilities, including our renewable energy outdoor test area for research and development on solar photovoltaic technology, solar thermal power, wind turbines, hybrid systems and micro-grid technology.

Once you graduate, you can put your new internationally recognised skills to use across many different industries and organisations and positively impact the world's future energy use.

QUALIFICATION/ MAJORS	CRICOS CODE	COURSE CODE	INTAKE	DURATION (YEARS)	FEES (AUD)		ENTRY REQUIREMENTS
					2022 INDICATIVE FIRST YEAR FEE <sup>^</sup>	2022 INDICATIVE TOTAL COURSE FEE <sup>^</sup>	IELTS
<b>Graduate Certificate</b>							
Energy and Carbon Studies	094589K	C1137	Semester 1 and 2	0.5	\$16,680	\$16,680	Overall 6.0 with no band below 6.0
<b>Graduate Diploma</b>							
Energy and Carbon Studies	094617M	G1079	Semester 1 and 2	1	\$33,360	\$33,360	Overall 6.0 with no band below 6.0
Energy and the Environment	034962B	G1062	Semester 1 and 2	1	\$33,360	\$33,360	Overall 6.0 with no band below 6.0
<b>Masters</b>							
Renewable and Sustainable Energy	094590F	M1268	Semester 1 and 2	2	\$33,360	\$66,720	Overall 6.0 with no band below 6.0

<sup>^</sup>All fees were correct at the time of printing and are to be used as a guide only. Fees are subject to change without notice.



## Real-world skills

Our pioneering renewable energy and energy efficiency program is the longest running and most comprehensive program in Australia and ensures you graduate industry-ready.



### Forefront of energy teaching and research

Since 1975, Murdoch University continues to offer the most comprehensive program in renewable energy within Australia



### 5 star rating

for skills development, overall experience and teaching quality in postgraduate studies for engineering and technology

GOOD UNIVERSITIES GUIDE 2021

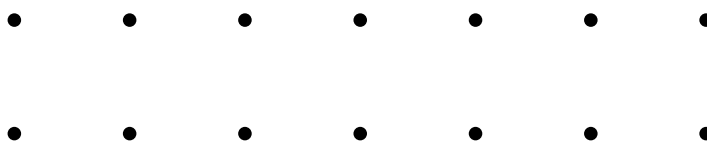


### Energy courses developed with industry

Our energy courses have industry input so you'll graduate knowing the demands and developments of Australia's energy and carbon industries



# Engineering and Energy continued



## Learn in real-world facilities

### Bayer Pilot Plant

Learn in our \$10.1 million engineering pilot plant, which hosts advanced control systems using a modern industrial data acquisition and control platform.

### Instrumentation and Control Engineering Lab

Featuring a modular station design, this lab is where you could configure a range of experiments using process equipment and data communication systems as part of your degree.

### Renewable Energy Engineering Lab

Get practical experience working with a range of wind industry standard software and equipment designed to test the characteristics of PV modules, the performance of solar water pumping systems, and the analysis of wind and solar resources.

### Power Engineering Lab

The lab is equipped with electrical machines and power electronics modules, including maximum power point tracker (MPPT) tests, configurable 4.5 kW PV array and battery test facilities.

### Surface Analysis Research Laboratory

The laboratory has an X-ray Photoelectron Spectrometer (KRATOS-axis ultra) which allows multi-technique X-ray Photoelectron Spectroscopy with XPS-mapping capability and Auger Electron Spectroscopy. The lab also has Atomic Force Microscope (AFM) and Scanning Tunnelling Microscope (STM).

## Renewable Energy Outdoor Testing Area

Including a range of renewable energy facilities such as photovoltaic, wind, diesel, battery and hybrid systems, low temperature solar thermal systems and a sun simulator for PV module tests, this area is designed to equip students with strong practical skills.



“ I chose Murdoch because it offered a high standard of industry-relevant courses that I thought would be perfect for upgrading my current skillset. Additionally, the Perth campus offered state-of-the-art facilities, such as the Bayer Pilot Plant with embedded control labs, which could provide me with real-world experience. There is a particularly great emphasis on the practical aspect of engineering and it's this practical exposure to industry-standard systems that has proved to be beneficial in really advancing my skills. ”

DEEPA MACHAIAH, INDIA  
MASTER OF ENGINEERING

# Health Industries and Leadership

## How will your leadership and business skills change the way we help and care for people?

Murdoch offers courses in healthcare management and leadership that will help you reach the next level of your career. Whether you want to build your skills in leadership and management to further progress your healthcare career, we have a course for you.

Our courses are designed to meet the changing needs of healthcare professionals and offer a streamlined way to build your expertise.

You'll be taught by highly experienced academics and health leaders who are called upon to give their insights and opinions on current events and issues.



### Career growth

Caring careers have grown by 18% in the last five years



### Study options

Take on a case study project, research internship, supervised project or research thesis as part of your studies, to suit your career aspirations



### Growth industry

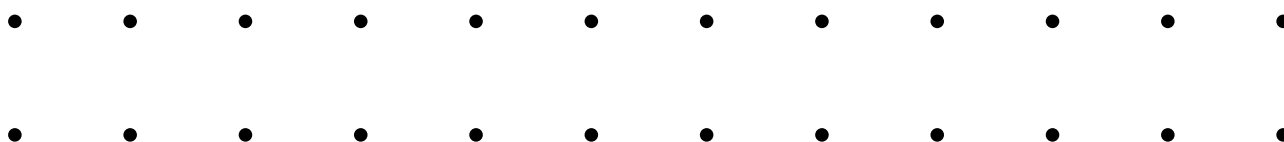
By 2025, there will be an extra 798,000 healthcare jobs in Australia



# Health Industries and Leadership continued

Qualification/ Majors	CRICOS Code	Course Code	Intake	Duration (Years)	Fees (AUD)		Entry Requirements
					2022 Indicative First Year Fee^	2022 Indicative Total Course Fee^	IELTS
Graduate Certificate							
Counselling	080704E	C1111	Semester 1 and 2	0.5	\$15,540	\$15,540	Overall 7.0 with no band below 7.0
Gerontological Healthcare	103900G	C1154	Semester 1 and 2	0.5	\$15,400	\$15,400	Overall 6.0 with no band below 6.0
Systems Medicine	103897H	C1152	Semester 1	0.5	\$16,680	\$16,680	Overall 6.0 with no band below 6.0
Graduate Diploma							
Counselling	056249A	G1055	Semester 1 and 2	1	\$31,080	\$31,080	Overall 7.0 with no band below 7.0
Psychology	052860C	G1058	Semester 1 and 2	1	\$31,080	\$31,080	Overall 7.0 with no band below 7.0
Systems Medicine	103898G	G1089	Semester 1	1	\$33,360	\$33,360	Overall 6.0 with no band below 6.0
Masters							
Applied Psychology in Clinical Psychology	079349G	M1156	Semester 1	2	\$31,080	\$62,160	Overall 7.0 with no band below 7.0
Applied Psychology (Professional)	085584A	M1238	Semester 1	1	\$31,080	\$31,080	Overall 7.0 with no band below 7.0
Business Administration (Global)	096880B	M1279	Trimester 1, 2 and 3	2	\$31,080	\$62,160	Overall 6.0 with no band below 6.0
Counselling	056251G	M1143	Semester 1 and 2	2	\$31,080	\$62,160	Overall 7.0 with no band below 7.0
Exercise Science (Research)	096788J	M1275	Trimester 1 and 3	2	\$31,580	\$63,120	Overall 6.5 with no band below 6.5
Health Administration, Policy and Leadership	093385G	M1267	Trimester 1, 2 and 3	2	\$31,080	\$62,160	Overall 6.0 with no band below 6.0
Public Policy and Management	077163M	M1194	Semester 1 and 2	2	\$28,800	\$62,160	Overall 6.0 with no band below 6.0
Systems Medicine (Research)	010186I	M1302	Semester 1	2	\$33,960	\$67,920	Overall 6.0 with no band below 6.0
Doctorate							
Psychology in Clinical Psychology	079351B	D1073	Semester 1 and 2	3.5	\$31,560	\$110,460	Overall 7.0 with no band below 7.0
COMBINED DEGREES							
Masters							
Business Administration and Health Care Management	0100218	M1296	Semester 1 and 2 Trimester 1, 2 and 3	2	\$31,080	\$62,160	Overall 6.0 with no band below 6.0

<sup>^</sup>All fees were correct at the time of printing and are to be used as a guide only. Fees are subject to change without notice.





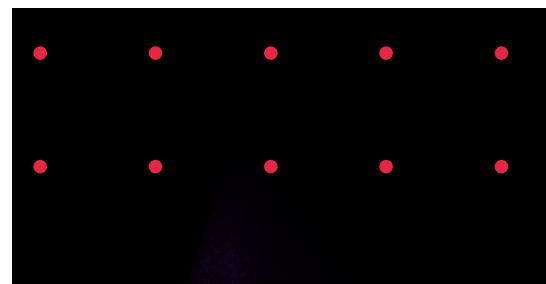
“ I like that Murdoch focuses on equipping students with the underlying processes of public policy making. My degree draws from various fields of study, given the nature of public policy making, and I have enjoyed looking at public policy and management from various field of study angles that underline the visible policy outputs of politicians. I’ve enjoyed the challenge of mastering new concepts and then working innovatively with them. ”

**MWAPE MULUMBI, ZAMBIA**  
MASTER OF PUBLIC POLICY AND MANAGEMENT





# Information Technology



Qualification/ Majors	Cricos Code	Course Code	Intake	Duration (Years)	Fees (AUD)		Entry Requirements
					2022 Indicative First Year Fee^	2022 Indicative Total Course Fee^	IELTS
Graduate Certificate							
Information Technology	052847M	C1109	Semester 1 and 2	0.5	\$14,400	\$14,400	Overall 6.0 with no band below 6.0
Graduate Diploma							
Artificial Intelligence and Data Science	103453C	G1092	Semester 1 and 2	1	\$28,800	\$28,800	Overall 6.0 with no band below 6.0
Cyber Security and Networking	103452D	G1091	Semester 1 and 2	1	\$28,800	\$28,800	Overall 6.0 with no band below 6.0
Information Technology	0101258	G1086	Semester 1 and 2	1	\$28,800	\$28,800	Overall 6.0 with no band below 6.0
Information Technology Management	052853B	G1051	Semester 1 and 2	1	\$28,800	\$28,800	Overall 6.0 with no band below 6.0
Masters							
Information Technology*	057275B	M1220	Semester 1 and 2	2	\$28,800	\$57,600	Overall 6.0 with no band below 6.0
Science in Information Technology*	0101998	M1294	Semester 1 and 2	1.5	\$28,800	\$43,200	Overall 6.0 with no band below 6.0
Doctorate							
Information Technology	039521J	D1059	Semester 1	3	\$30,240	\$92,550	Overall 6.5 with no band below 6.0

## COMBINED DEGREES

### Masters

Business Administration and Information Technology	099394C	M1289	Semester 1 and 2 Trimester 1, 2 and 3	2	\$31,080	\$62,160	Overall 6.0 with no band below 6.0
--	---------	-------	--	---	----------	----------	------------------------------------

<sup>^</sup>All fees were correct at the time of printing and are to be used as a guide only. Fees are subject to change without notice.

\*Master of Information Technology and Master of Science in Information Technology areas of specialisation include Information Technology Management, Cyber Security and Networking, Artificial Intelligence and Data Science.



### 5 star rating

for learner engagement and learner resources for computing and information technology

GOOD UNIVERSITIES GUIDE 2021



### Well above world standard

The highest possible rating by the Australian Government for our research in technology

EXCELLENCE IN RESEARCH FOR AUSTRALIA 2018



### 5 star rating

for skills development for computing and information technology

THE GOOD UNIVERSITIES GUIDE 2021



## Get ahead in your career with one of the fastest growing professions in the country.

Learn to manage, protect and leverage data to drive business decisions, solve social problems and even inform better healthcare. Develop your knowledge and skills to create games and apps using the latest software technology and industry best practices.

You could tap into the ever growing need for network specialists with security skills who can establish, maintain and develop information systems that address concerns with network performance and security. You could also pursue senior management roles by developing your business acumen and management skills alongside specialised skills in data analytics and data science to gain valuable business insights.

“ Studying IT is great because the world is always changing. For this course you have a theoretical part as well as a practical part, and it’s great because you can have all the theoretical knowledge that you have acquired and put it into practice in tutorials and labs with tutors helping you out. I would recommend people to come to Murdoch because this university is great. I’ve had a great experience here and I’m sure it will help me when I go out into the industry. ”

**GABRIEL MARTINEZ DE OLIVEIRA, BRAZIL**  
MASTER OF INFORMATION TECHNOLOGY





# International Policy and Development

## How will you make a difference to society and the community?

Are you interested in caring for the environment, building communities, protecting human rights, ending poverty and hunger, or creating peaceful, fair and secure societies? Our international policy and development courses can open doors to rewarding careers where you can make a difference and help to build a better world.

As you study, you'll have the chance to build your professional portfolio of work through case studies and real project work in class and complete internships.

You will benefit from our strong links with the Asia region through our Asia Research Centre, an international leader in the study of East and Southeast Asia.



**Ranked in the top 10  
universities in Australia**  
for Politics and International Studies  
THE RANKINGS BY SUBJECT 2020



**Take on a professional  
internship or practical project**  
to put your learning into practice  
as you gain academic credit



**Learn from academics**  
who have worked in the  
development and policy industry  
for companies such as OXFAM  
and Care International

Qualification/ Majors	Cricos Code	Course Code	Intake	Duration (Years)	Fees (AUD)		Entry Requirements
					2022 Indicative First Year Fee^	2022 Indicative Total Course Fee^	IELTS
Graduate Certificate							
Policy and Development	077166G	C1135	Semester 1 and 2	0.5	\$14,400	\$14,400	Overall 6.0 with no band below 6.0
Graduate Diploma							
Community Development	059720C	G1061	Semester 1 and 2	1	\$28,800	\$28,800	Overall 6.0 with no band below 6.0
Masters							
Business Administration (Global)	096880B	M1279	Trimester 1, 2 and 3	2	\$31,080	\$32,160	Overall 6.0 with no band below 6.0
Community Development	081029E	M1212	Semester 1 and 2	2	\$28,800	\$57,600	Overall 6.0 with no band below 6.0
Development Studies	077165J	M1195	Semester 1 and 2 Trimester 2 and 3	2	\$28,800	\$57,600	Overall 6.0 with no band below 6.0
Health Administration, Policy and Leadership	093385G	M1267	Trimester 1, 2 and 3	2	\$28,800	\$57,600	Overall 6.0 with no band below 6.0
International Affairs and Security	093074A	M1266	Semester 1 and 2 Trimester 2 and 3	2	\$28,800	\$57,600	Overall 6.0 with no band below 6.0
Public Policy and Management	077163M	M1194	Semester 1 and 2	2	\$28,800	\$57,600	Overall 6.0 with no band below 6.0
Sustainable Development	072141B	M1214	Semester 1 and 2	2	\$28,800	\$57,600	Overall 6.0 with no band below 6.0

<sup>^</sup>All fees were correct at the time of printing and are to be used as a guide only. Fees are subject to change without notice.

“ I chose to study at Murdoch because they offered me the possibility and flexibility to do my research thesis with supervisors from two different school faculties. This means that I’m now working with supervisors from the Schools of Arts and Business and Governance, where I can use both their expertise and knowledge to further inform and broaden my thesis and future career prospects. I feel so fortunate to be able to study at Murdoch with such supportive supervisors who encourage me to develop my critical thinking through my research. ”

**RIZKI PRAFITRI, INDONESIA**  
PHD IN COMMUNITY DEVELOPMENT





# Law, Criminology and Forensic Science

## How will you make a difference to society and the community?

Turn ideas into actions that make the world a better place with a postgraduate law, criminology or forensic science degree from Murdoch.

In law, you'll learn legal theory and have the opportunity to couple it with real world experience that will prepare you for a career in standing up for others. You can also take part in practical legal training on-campus and the option to study a Master of Laws by Research if you are looking to continue academic studies.

In criminology you will gain an understanding of criminal behaviour and investigate complex crimes such as cyber crimes and terrorism. You will understand developing criminal justice issues, including how criminal law and evidence responds to new crimes, particularly in the business environment.

In forensic science, you will obtain professional training in crime scene investigation to international standards. Training is additionally provided in forensic specialisations such as anthropology, disaster victim identification, entomology, palynology and pathology. Reconstruction of crime scenes is emphasised, as is the collection, processing and interpretation of biological, DNA and physical evidence.



## Theory in practice

Students studying a Master of Forensic Science gain valuable field experience at Whitby Falls, processing a simulated large-scale homicide and a clandestine grave incident for evidence as part of their course.



### Learn from academics

who have worked in prisons treating criminal behaviour, as senior personnel in the Australian Federal Police and with the FBI and other foreign authorities



### Study the only Master of Criminology course in Western Australia



### State-of-the-art facilities

Study in the heart of the Murdoch health precinct, which includes 3 hospitals and a medical research institute



QUALIFICATION/ MAJORS	CRICOS CODE	COURSE CODE	INTAKE	DURATION (YEARS)	FEES (AUD)		ENTRY REQUIREMENTS
					2022 INDICATIVE FIRST YEAR FEE^	2022 INDICATIVE TOTAL COURSE FEE^	IELTS
Graduate Certificate							
Criminology	103449K	C1161	Trimester 1, 2 and 3	0.5	\$14,440	\$14,440	Overall 6.0 with no band below 6.0
Forensic Science (Professional Practice)	086029J	C1131	Semester 1 and 2	0.5	\$16,680	\$16,680	Overall 6.0 with no band below 6.0
Graduate Diploma							
Criminology	103448M	G1093	Trimester 1, 2 and 3	1	\$28,800	\$28,800	Overall 6.0 with no band below 6.0
Forensic Science (Professional Practice)	099648G	G1085	Semester 1 and 2	1	\$33,360	\$33,360	Overall 6.0 with no band below 6.0
Masters							
Criminology	103447A	M1314	Trimester 1, 2 and 3	2	\$28,800	\$57,600	Overall 6.0 with no band below 6.0
Forensic Science (Professional Practice)	089467G	M1255	Semester 1 and 2	1.5	\$33,360	\$50,040	Overall 6.0 with no band below 6.0
Forensic Science (Professional Practice and Research)	099647J	M1292	Semester 1 and 2	2	\$33,360	\$66,720	Overall 6.0 with no band below 6.0
International Affairs and Security	093074A	M1266	Semester 1 and 2 Trimester 2 and 3	2	\$28,800	\$57,600	Overall 6.0 with no band below 6.0

<sup>^</sup>All fees were correct at the time of printing and are to be used as a guide only. Fees are subject to change without notice.



“ I enjoy the practicality of the forensic science degree. I love that after doing some theory in the classroom we are given an opportunity to apply it and receive feedback on our techniques. ”

**LISA WALKES, BARBADOS**  
MASTER OF FORENSIC SCIENCE





# Veterinary Medicine



**The only university in  
Western Australia**

to offer Veterinary Science



**Globally  
accredited degree**

Qualify to register and practice as a  
veterinarian in Australia, New Zealand, UK,  
Singapore, Malaysia and North America



**Get hands-on  
experience**

Learn real-world skills in facilities that  
include veterinary teaching hospitals,  
clinics and a working farm, all located  
on the Perth campus





## Already have a veterinary degree and want to take your career to the next level?

Build on your current skills as a practising veterinarian. The internationally accredited veterinary program at Murdoch will provide you with evidence-based educational advancement opportunities to become a veterinary specialist.

Whether you are aiming to gain expertise in conservation medicine, knowledge in disease and animal health, or looking to develop clinical training skills, we can ensure you will be taught by practitioners and researchers at the forefront of their fields.

QUALIFICATION/ MAJORS	CRICOS CODE	COURSE CODE	INTAKE	DURATION (YEARS)	FEES (AUD)		ENTRY REQUIREMENTS
					2022 INDICATIVE FIRST YEAR FEE <sup>A</sup>	2022 INDICATIVE TOTAL COURSE FEE <sup>A</sup>	IELTS
<b>Masters</b>							
Veterinary Clinical Studies	099315G	M1223	Semester 1 and 2	1.5	\$47,160	\$70,740	Overall 7.0 with no band below 6.5
<b>Doctorate</b>							
Veterinary Medical Science	077556E	D1061	Semester 1 and 2	3	\$33,960	\$101,880	Overall 7.0 with no band below 6.5

<sup>A</sup>All fees were correct at the time of printing and are to be used as a guide only. Fees are subject to change without notice.

“When I had decided that I wanted to be a veterinarian, choosing Murdoch University to pursue this dream was an easy decision. In early 2018, with the ambition of providing the best veterinary dermatology clinic in Western Australia, I started a dermatology referral service out of Western Australia Veterinary Emergency and Speciality (WAVES). I am very thankful to be able to work alongside specialists in surgery, internal medicine, radiology and emergency to provide pets with the best care available.”

**DR MENG SIAK, SINGAPORE**

BVMS MANZCVS (CANINE MEDICINE) FANZCVS (VETERINARY DERMATOLOGY), REGISTERED SPECIALIST IN VETERINARY DERMATOLOGY

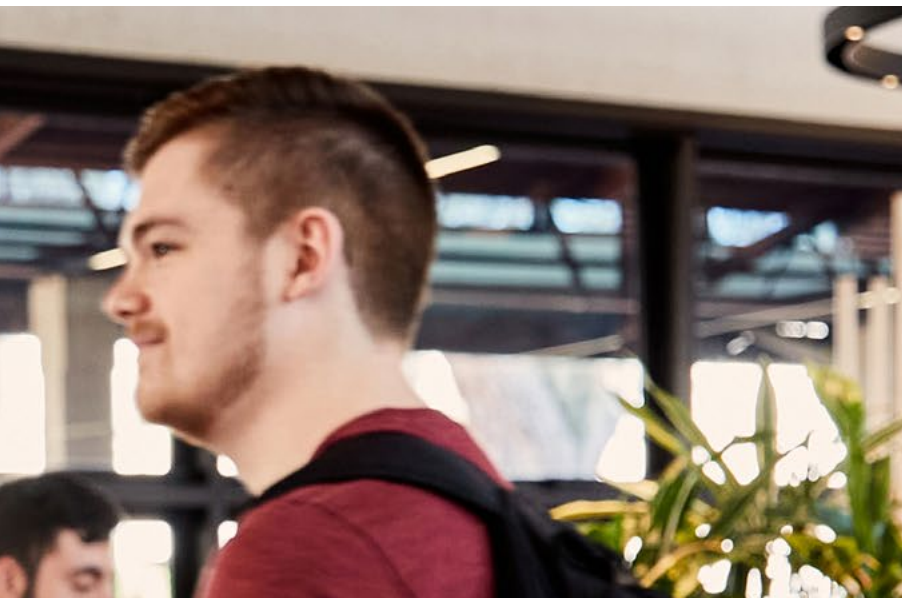






Scholarships  
and fees





## Murdoch understands that studying at university can be a life-changing experience.

Whether you're returning to study or beginning on your journey to making ground-breaking discoveries as one of our research students, Murdoch has a scholarship for you.

### RESEARCH SCHOLARSHIPS

Don't let your finances limit your creativity. With one of Murdoch's research-based scholarships, covering both tuition fees and living costs, you can focus on uncovering the latest breakthroughs in your field.

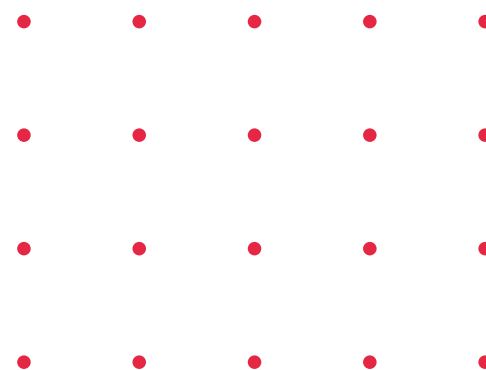
Murdoch provides our students with our own range of scholarships, but we can also help you to find a range of scholarships offered by external providers.

### INTERNATIONAL WELCOME SCHOLARSHIP

If you're an international student living overseas and applying to study at Murdoch, you may be eligible to receive up to AU\$10,000 with an International Welcome Scholarship.

### MURDOCH INTERNATIONAL HONOURS WELCOME SCHOLARSHIP

If you're an international student applying to study honours at Murdoch, you may be eligible to receive up to AU\$10,000 with a Murdoch International Honours Welcome Scholarship.



### INTERNATIONAL MERIT AWARD

If you're a high achieving international student during your studies at Murdoch, you may be eligible to receive AU\$1,000 during your studies with an International Merit Award.

### INTERNATIONAL WELCOME SCHOLARSHIP - AUSTRALIA

If you're an international student living in Australia and applying to study at Murdoch, you may be eligible to receive a 20% scholarship towards reducing your tuition fees.

For more information on our range of International Welcome Scholarships, visit

[murdoch.edu.au/  
internationalwelcome  
scholarship](http://murdoch.edu.au/internationalwelcome/scholarship)

or to view our full list of international scholarships, visit

[murdoch.edu.au/  
international  
scholarships](http://murdoch.edu.au/international/scholarships)

To find out more about our research scholarships, visit

[murdoch.edu.au/  
researchscholarships](http://murdoch.edu.au/researchscholarships)



# Study abroad and **exchange**

**Not ready to commit to a full degree? Why not experience, study and live the best of what education, Australia and life has to offer with a semester or two at Murdoch?**

Through Murdoch's Study Abroad and Exchange program, you will have the opportunity to:

- Spend one or two semesters studying in sunny Western Australia at Murdoch's Perth campus.
- Earn academic credit points, which can be transferred back to your home university degree or may be used towards further studies at Murdoch.
- Choose subjects to study from at a postgraduate level.
- Join other Study Abroad and Exchange students as you explore Western Australia with the many unique West Australian tours Murdoch has on offer.
- Enjoy all that Australia has to offer with a wide variety of social events and activities designed specifically for you and other Study Abroad and Exchange students.

## **STUDY ABROAD AND EXCHANGE SUPPORT TEAM**

The Study Abroad and Exchange support team is your dedicated one-stop-shop for any information or assistance you require in the lead up to, or during, your time studying abroad at Murdoch. Providing you with information regarding admissions, orientation and welfare matters while you are at Murdoch, the Study Abroad and Exchange support team can also assist you with:

- Airport transfer information
- Accommodation enquiries
- A comprehensive orientation program
- Organisation of social events and excursions such as the North West trip

## **NORTH WEST TRIP**

10 days, 4,000 kilometres, 1 ultimate Australian experience!

As a Murdoch Study Abroad and Exchange student, you will get to experience all that outback Australia has to offer with the Murdoch University North West trip. Travelling by bus through the rugged Australian terrain, you will venture into the heart of the North West of Australia as you explore some of Western Australia's world-famous destinations, including:

- The Pilbara
- Karijini National Park
- Shark Bay and Monkey Mia
- Ningaloo Reef

## **Experience WA for less**

The cost of Murdoch's Study Abroad and exchange program for one semester is only \$6,900—more affordable than most other universities.

To find out more, visit

[murdoch.edu.au/studyabroad](http://murdoch.edu.au/studyabroad)

or email

[studyabroad@murdoch.edu.au](mailto:studyabroad@murdoch.edu.au)





# Student support





## Studying at university involves so much more than just lectures, labs and tutorials - it's a whole new way of life.

To help you get settled, keep on track and make the most of your new university experience, we have a wide range of support services and programs on offer to help you at every stage of your Murdoch journey.

### AIRPORT PICK-UPS

The Murdoch Student Guild offers a free airport pick-up service for all new international students. The service runs all year round and transports new students arriving from another country safely to your accommodation in Perth.

### ORIENTATION

In the week before your classes start, you'll attend an orientation week, so you can be introduced to all things Murdoch. You can attend course advice sessions, meet your lecturers, sign up for clubs and activities, get your student card, go on campus tours, make friends and really immerse yourself in uni life.

### THE STUDENT CENTRE

Our Student Centre, located in the hub of our Perth campus, is the best place to go for administrative support, including information on fees, parking permits, enrolment and class sign-up, ID cards, requests for academic transcripts and general course information.

### ACADEMIC SUPPORT

As a Murdoch student, you'll have exclusive access to free workshops that focus on various learning skills, such as essay writing, English language skills, editing, referencing, time management and so much more. You'll also have access to a wide range of online academic support resources, including Studiosity, where you can get feedback on English writing for draft essays and reports, and live online assistance from subject specialists.

If you need help with a specific unit, you could join our Peer Assisted Study Sessions (PASS), which are group study sessions led by trained students who have successfully completed the unit.

### HEALTH SUPPORT

Whether you need help adjusting to a new culture, staying on top of your assignments, or advice about your wellbeing, Murdoch offers a range of free health, medical and counselling services for international students throughout their time at university.

### CAREER SUPPORT

Our friendly Careers and Employment team is here to help you with all your career-related queries. They can help you find internship and vacation opportunities, and they also run and promote career events, mentoring programs and workshops that can help increase your employability.

### CHILDCARE SUPPORT

We have a childcare centre and kindergarten at our Perth campus, to help students balance family and study commitments.

### STUDENT SUPPORT TEAM

The Student Support Team provides you with support for your undergraduate degree. Support includes assisting you with complex and intersectional issues that impact individual academic progress, visa compliance and wellbeing.

### MYMURDOCH ADVICE

Asking for advice is part of university life and key to being a successful student. At myMurdoch Advice, we'll help you get the most out of your university experience and give you valuable guidance for your studies and wellbeing.

Our friendly and knowledgeable team of Student Success Advisors and Peer Academic Coaches can offer personalised advice on your studies, course plans, academic skills, English language support, getting the most out of university life, and much more. They can also help arrange meetings for you with one of our expert support areas, including our:

- On-campus medical or counselling services Equity and Social Inclusion Office, which may help you if you have a disability and/or medical condition, or if you identify as LGBTQI2+ and need information and support
- Kulbardi Aboriginal Centre, which offers help and support services if you are an Aboriginal student or Torres Strait Islander student
- Murdoch Guild, which provides advocacy, support and services for all of our Murdoch students

**For more information on any of our support services, visit**

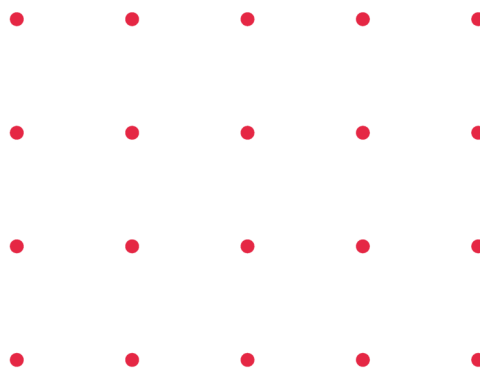
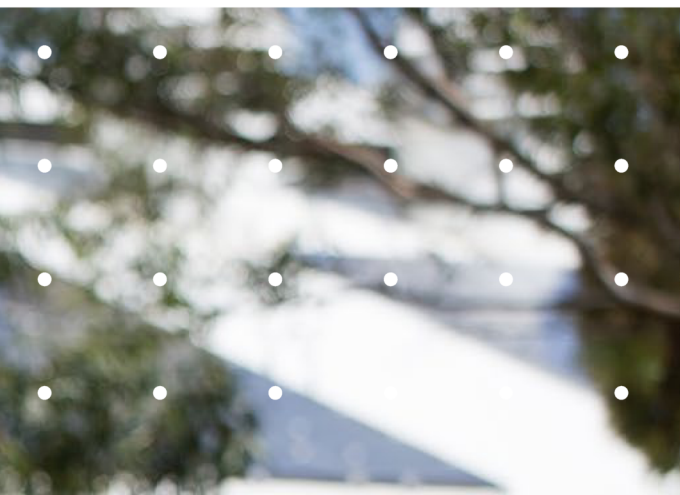
**[murdoch.edu.au/  
supportservices](https://murdoch.edu.au/supportservices)**



# Pathways to **Murdoch**







## At Murdoch, we understand that not everyone follows the same path to pursuing their studies.

That's why we've worked closely with our partner institutions to develop a range of package enrolments that will help you to meet Murdoch's English entry requirements and get you into the Murdoch degree you want to study.

### ENGLISH PATHWAYS

If you need help meeting our English language requirements, or simply want to improve on your English before starting your studies at Murdoch, we partner with a range of English language providers to help you meet your English language goals.

### PRIORITY PARTNERS:



#### Language Links

[enquiries@languagelinks.wa.edu.au](mailto:enquiries@languagelinks.wa.edu.au)  
[www.languagelinks.wa.edu.au](http://www.languagelinks.wa.edu.au)

CRICOS Provider Code: 02139J



#### Phoenix Academy

[info@phoenix.wa.edu.au](mailto:info@phoenix.wa.edu.au)  
[www.phoenix.wa.edu.au](http://www.phoenix.wa.edu.au)

CRICOS Provider Code: 00066D

### OTHER PARTNERS:



#### International Institute of Business and Technology (IIBT)

[enquiries@iibt.edu.au](mailto:enquiries@iibt.edu.au)  
[www.iibt.edu.au](http://www.iibt.edu.au)

CRICOS Provider Code: 03345F



#### MILNER INTERNATIONAL COLLEGE OF ENGLISH

#### Milner International College of English

[info@milner.wa.edu.au](mailto:info@milner.wa.edu.au)  
[www.milner.wa.edu.au](http://www.milner.wa.edu.au)

CRICOS Provider Code: 00061J



#### Perth International College of English

[info@pice.com.au](mailto:info@pice.com.au)  
[www.pice.com.au](http://www.pice.com.au)

CRICOS Provider Code: 02368G

For more information regarding our preferred English language intensive courses for overseas students (ELICOS) providers, please visit

[murdoch.edu.au/PathwaysToMurdoch](http://murdoch.edu.au/PathwaysToMurdoch)



# Entry Requirements

## MINIMUM POSTGRADUATE ENTRY REQUIREMENTS

For admission into one of our postgraduate degrees, you must provide evidence of the successful completion of a relevant degree from a recognised university, in addition to meeting Murdoch's prescribed English Language requirements.

At a minimum, to qualify for one of our postgraduate degrees, you must meet one of the following requirements. Please note that entry requirements are dependent on the course you wish to study and as such, your specific course may have different entry requirements:

- A qualification equivalent to an AQF Associate Degree
- Bachelors degree of AQF Level 7 in relevant discipline
- Bachelors degree of AQF Level 7 with relevant work experience
- Bachelors degree of AQF Level 7 with specific professional registration
- Postgraduate qualification of AQF Level 8 or above
- Submission of a Portfolio and/or substantial work experience

## MINIMUM ENGLISH LANGUAGE ENTRY REQUIREMENTS

English Language test	Score
<b>Academic International English Language Testing System (IELTS)</b>	Overall 6.0 with no band below 6.0
<b>Cambridge Advanced English (CAE)</b>	169 overall with no band below 169
<b>Pearson Test of English (PTE)</b>	50 with no band below 50
<b>Test of English as a Foreign Language – IBT (TOEFL IBT)</b>	73 with no band less than 18
<b>Occupational English Test (OET)</b>	OET with minimum of C (250 - 290) in four components

## COURSES WITH A HIGHER ENGLISH LANGUAGE REQUIREMENT

Course	English Language test		
	Academic International English Language Testing System (IELTS)	Pearson Test of English (PTE)	Test of English as a Foreign Language – IBT (TOEFL IBT)
<b>Graduate Diploma in Migration Law and Practice</b>	IELTS overall score of 7.0 with no band less than 6.5	Does not meet direct entry	100 with no band less than 22
<b>Master of Education (Coursework)</b>	IELTS overall score of 6.5 with no band less than 6.0	58 with no band below 58	90 with no band less than 20
<b>Master of Food Security</b>	IELTS overall score of 6.5 with no band less than 6.0	61 with no band below 54	79 with no band less than 18
<b>Master of Teaching (Primary)</b>	IELTS overall score of 7.5 with no band less than 7.0 in reading and writing and 8.0 in speaking and listening	76 with no band below 76	102 with no band less than 24 in reading and writing and 29 in speaking and listening
<b>Master of Veterinary Clinical Studies</b>	IELTS overall score of 7.0 with no band less than 6.5	68 with no band below 61	94 with no band less than 20
<b>Postgraduate Psychology and Counselling Courses</b>	IELTS overall score of 7.0 with no band less than 7.0	68 with no band below 68	94 with no band less than 24

To find out specific entry requirements for your preferred degree, or to learn more visit [murdoch.edu.au/study/postgraduate-students](http://murdoch.edu.au/study/postgraduate-students)



**There are differing entry requirements for postgraduate, research and honours degrees at Murdoch. Relevant prerequisites for each degree are detailed in this guide, with more information available at [murdoch.edu.au/courses](http://murdoch.edu.au/courses), including what qualifications you'll need from your home country.**

### Honours

Before you apply to study an honours degree, you need to have successfully completed a bachelors degree in a relevant subject at Murdoch or another university.

Each school has its own qualifying criteria, but you'll usually need to have at least a Distinction (or equivalent) average in your final year of studies. You will also need to ask an academic staff member with relevant expertise to supervise your research.

If you didn't complete your bachelors degree in Australia, you need to meet our minimum English requirements and show that you're competent in the English language.

Other prerequisites may apply. To learn about entry to specific honours courses please contact the Academic Chair of the school you are applying to. Your honours applications will be subject to approval by the School Dean.

### Research

The minimum requirements vary for each research degree, but are likely to include one or more of these:

- **An honours qualification**  
You've completed a bachelors degree with first class honours or upper second class honours from Murdoch or its equivalent at another university.
- **A postgraduate coursework qualification**  
You've completed other postgraduate qualifications which have involved a substantial research project, such as a Masters by Research degree.
- **Other qualifications or work experience**  
In some cases, it may be enough to provide evidence of your professional work experience conducting research projects. If you've led large projects, presented at conferences, published research outcomes, or implemented organisational change, these might demonstrate your ability to fulfil the entry requirements.

As an international student, you will also need to

1. **Submit an Expression of Interest form**
2. **Provide evidence of your English Language proficiency**

- IELTS (International English Language Testing System) 6.5 (no individual band less than 6.0)
- TOEFL (Test of English as a Foreign Language)  
- Internet-based - Minimum score of 90 with no band less than 20.

For more information on honours entry requirements please visit

[murdoch.edu.au/study/honours-students/entry-requirements](http://murdoch.edu.au/study/honours-students/entry-requirements)

For more information on research entry requirements or to access the Expression of Interest form, please visit

[murdoch.edu.au/study/research-students/entry-requirements](http://murdoch.edu.au/study/research-students/entry-requirements)





Join us



**Are you ready to kick-start your exciting and new journey at Murdoch? Applying to study is easy and we're here to help guide you every step of the way.**

#### **1. FIND A COURSE**

Depending on your career goals and the field of study you're looking to pursue, your postgraduate studies can be completed by coursework or research.

To view our full range of courses and find the right one for you, visit **[murdoch.edu.au/study/postgraduate-students](https://murdoch.edu.au/study/postgraduate-students)**

#### **2. CHECK THE ENTRY REQUIREMENTS**

Entry requirements vary depending on the course you're applying for and may also take into consideration any previous education, your English proficiency and any work experience you may have.

To find out the exact entry requirements you'll need for your course, including any qualifications you'll need from your home country, simply search for your chosen course here **[murdoch.edu.au/courses](https://murdoch.edu.au/courses)**

#### **3. EXPLORE SCHOLARSHIP OPTIONS**

Explore all Murdoch scholarships and find out what you may be eligible for or head to **[murdoch.edu.au/internationalscholarships](https://murdoch.edu.au/internationalscholarships)**

#### **4. APPLY**

Depending on your home country, you may be required to apply through an agent. If this is the case, you can find a full list of all Murdoch's registered international agents at **[murdoch.edu.au/OverseasRepresentatives](https://murdoch.edu.au/OverseasRepresentatives)**

Your application may need to undergo a Genuine Temporary Entrant (GTE) assessment in addition to meeting the University's English and Academic entry requirements. Satisfying the GTE requirements is part of the Australian student visa application process.

To find out more about applying through an agent, visit **[murdoch.edu.au/findanagent](https://murdoch.edu.au/findanagent)**

If you're not required to apply through an agent, you may still choose to have an agent assist with your application, or you may apply directly to Murdoch online at **[murdoch.edu.au/apply](https://murdoch.edu.au/apply)**

To apply for a postgraduate research degree, you need to provide evidence of your academic or professional accomplishments. You will also need to complete and submit an expression of interest form available at **[murdoch.edu.au/study/research-students](https://murdoch.edu.au/study/research-students)**

Upon successful expression of interest, you will be invited to submit a formal application.

To find out more about applying online, visit **[murdoch.edu.au/OnlineApplications](https://murdoch.edu.au/OnlineApplications)**



# Accepting your **offer**



## You've taken the first big step and applied to study at Murdoch. Now it's time to accept your offer and get ready for your new adventure in Perth.

### ACCEPT YOUR OFFER

If your application is successful, you'll receive a Letter of Offer with your enrolment details. To accept your place at Murdoch, return your signed Acceptance of Offer documents in addition to your compulsory deposit, which will be outlined in your Letter of Offer.

For more information on accepting your offer, visit [murdoch.edu.au/PGAcceptYourOffer](http://murdoch.edu.au/PGAcceptYourOffer)

### CONFIRMATION OF ENROLMENT (CoE)

Once Murdoch has received your Acceptance of Offer documents and payable deposit, we will issue you an electronic Confirmation of Enrolment (CoE), which then allows you to begin your visa application process through the Department of Home Affairs.

### ORGANISING YOUR STUDENT VISA

All international students require a valid visa in order to study in Australia. You can apply for your student visa by either visiting the Department of Home Affairs website, or with the assistance of your agent.

In addition to your Confirmation of Enrolment (CoE), you may be required to provide other documentation as part of your visa application, including financial, health insurance, and language skills evidence.

Please note, if you are under the age of 18, the Australian Government requires additional documents in regard to accommodation, support and welfare arrangements, before the University will be able to accept you into the course and issue you with a CoE.

### GET STARTED

Once your acceptance is processed, you'll be able to activate your student account, using the Murdoch Student Number in your Confirmation of Enrolment (CoE).

Your student number is your Murdoch identification, and is used as your username to log in to the Murdoch website. After activating your student account and creating a password, you'll be able to enrol in units and choose your timetable.

You're nearly ready to kick-start your exciting new adventure at Murdoch! Now you will need to go online to prepare your timetable, enrol in your units and sign-up for classes.

To make things easier, you can start your enrolment process by going to our online Orientation page at [murdoch.edu.au/Orientation](http://murdoch.edu.au/Orientation)

Here we will guide you through the enrolment process and all the necessary information so you will be ready for the start of studies in no time at all.

## Accepting your offer checklist

To accept your offer and secure your place at Murdoch University, you simply need to email the following documents to [accept.international@murdoch.edu.au](mailto:accept.international@murdoch.edu.au):

- ✓ Your completed and signed Acceptance of Offer documents (as outlined in your Letter of Offer)
- ✓ A coloured copy of your passport (the page with your photo)
- ✓ Evidence of Overseas Student Health Cover (OSHC)\*
- ✓ A copy of the receipt from the payment of your compulsory deposit, as indicated in your Letter of Offer
- ✓ If applicable, your signed Advanced Standing letter. This letter outlines credits and exemptions from prior study. If you haven't already applied for Advanced Standing and believe you are eligible, please send an email to [international.admissions@murdoch.edu.au](mailto:international.admissions@murdoch.edu.au)

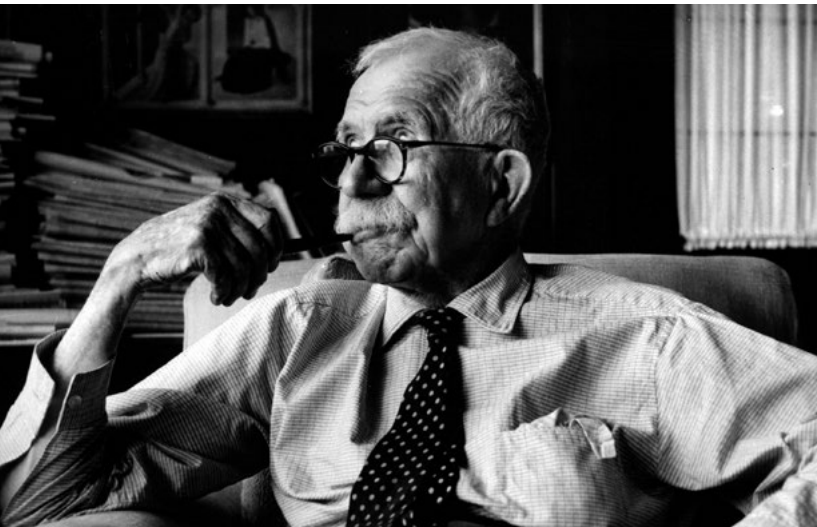
\*Unless your country has an insurance arrangement in place, you'll need to purchase Overseas Student Health Cover (OSHC) for yourself and members of your family to be covered for the duration of your student visa. At Murdoch University our preferred OSHC provider is Allianz Global Assistance, and their rate is quoted on your Letter of Offer.





We look forward  
to welcoming  
you into our

# free thinking community



“The only education out of which good can come is the education which teaches you to think for yourself instead of swallowing whatever the fashion of the moment may prescribe.”

- SIR WALTER MURDOCH, OUR FOUNDING FATHER AND ORIGINAL FREE THINKER, 1926.

## MEET MURDOCH

90 South Street, Murdoch WA 6150

Telephone: +61 8 9360 6063

Email: [international@murdoch.edu.au](mailto:international@murdoch.edu.au)



[tiktok.com/@murdochuni](https://www.tiktok.com/@murdochuni)



[facebook.com/MurdochInternationalStudents](https://www.facebook.com/MurdochInternationalStudents)



[instagram.com/murdochuniversity](https://www.instagram.com/murdochuniversity)



[twitter.com/murdochuni](https://twitter.com/murdochuni)



[linkedin.com/school/murdoch-university](https://www.linkedin.com/school/murdoch-university)



[murdochuniv](https://www.snapchat.com/add/murdochuniv)



[Murdoch University](https://www.youtube.com/MurdochUniversity)

Disclaimer: The information contained in this publication was correct as at May 2021, but is subject to amendment without notice. The University reserves the right to cancel, without notice, any units or courses if the number of students enrolled in these falls below limits set by the University. © 2021 Murdoch University. This publication is copyright. Except as permitted by the Copyright Act no part of it may in any form or by any electronic, mechanical, photocopying, recording or any other means be reproduced, stored in a retrieval system or be broadcast or transmitted without the prior permission of the publisher.