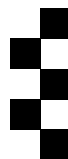




IMPATIENT FOR CHANGE?



**Undergraduate
Prospectus 2022**



University of Essex

The background of the entire page is a photograph of a wall covered in graffiti. The graffiti is in various colors and styles, with some words like 'PUBLIC TRIAL BY AN IND', 'equitable', 'until proven', 'handling', and 'private life or in' visible. The overall tone is gritty and urban.

ESSEX. FIND OUT HOW TO MAKE THE CHANGES YOU WANT

Whether you have your sights set on changing the world, or you just want to change your own life, Essex is the place for you.

Our transformative education isn't just about what you learn in the classroom. With an Essex education, you can take on the challenges of the world, personal or professional and make an impact. With Essex on your side you can start to make a difference; we will give you the skills and support to develop your ways of thinking, your understanding of your subject and the world around you, and to unlock the power of your own ideas to make your mark on the world.

In these unsettled times, the world needs Essex graduates now more than ever.



Our students, graduates and staff are striving for a more just society.

Bringing diverse cultures and perspectives into our community.

Helping you question conventional wisdom through a research mindset.

CONTENTS

Essex Impact	6
Our Research	10
Our Campuses	12
Colchester Campus	14
Southend Campus	20
Loughton	24
Visit Us	26
Welcome Home	28
Beyond Your Classroom	40
Support Services	42
Students' Union	44
Sport at Essex	46
Your Mind Taking Flight	48
Work Experience	50
Essex Pathways	52
Integrated Masters	53
Important Stuff	54
Applying to Essex	56
Fees and Funding	60
Subjects	62
And When It's All Over	112
Our Highlights	113
Our Partners	114
Sustainability	116
Important Information	118

SUBJECTS

Accounting	64	Hospitality and Events Management	89
Acting, Producing and Backstage	65	Human Rights	90
Actuarial Science	66	Journalism	91
American Studies	67	Law	92
Art History	68	Liberal Arts	93
Biochemistry	69	Literature	94
Biological Sciences	70	Marine Biology	95
Biomedical Science	71	Marketing	96
Business and Management	72	Mathematics	97
Childhood Studies	73	Modern Languages	98
Computer Science	74	Nursing: Adult or Mental Health	99
Creative Writing	75	Occupational Therapy	100
Criminology	76	Oral Health Science	101
Data Analytics	77	Philosophy	102
Drama	78	Physiotherapy	103
Economics	79	Politics and International Relations	104
Engineering	80	Psychology	105
English Language and Linguistics	81	Psychosocial and Psychoanalytic Studies	106
Entrepreneurship	82	Social Work	107
European Studies	83	Sociology	108
Film Studies	84	Speech and Language Therapy	109
Finance and Banking	85	Sport and Exercise Science	110
Genetics	86	Sports Therapy	111
Global Studies	87		
History	88		

ESSEX IMPACT

Meet some of our global family – working for change throughout their studies and as graduates of Essex.



Ahmed Faid

BSc Economics 2017

Founded a socially conscious media outlet

It's been 3 years since I first started to document the thoughts of ordinary Londoners. The seed was planted in 2011. There had been a massive increase in knife crime, higher university fees and the London riots. I wanted to create a platform for young people to share their thoughts. So in my second year I set up my own digital media company and hit the streets with my camera. That side hustle turned into Dose of Society and was accepted into the Facebook Accelerator programme. They gave us the knowledge to take Dose of Society forward.

We've recently received our first six-figure investment and been featured on *Good Morning Britain*. But I'm most proud of our short documentary – *Grenfell Tower: One Year On*.

Essex allowed me to flourish. It had that unique, family atmosphere. I felt comfortable to make mistakes, learn and adapt.

The last year has given us time to see the problems in our world. Dose of Society is in the process of launching a new video platform to connect activists and campaigners from all over. It's time to make changes and step into a brighter and better future.



Essex allowed me to flourish. I could make mistakes, learn and adapt.





Gabija Dalekaite

BA International Relations 2017 Taking on the challenge of world peace

I did my undergraduate degree here and MSc Conflict Resolution. The University of Essex was a very big part in shaping who I am. Not just in politics in general, but in life too. Essex gives you the opportunity to be who you want to be, and who you are. It gives you a chance to test yourself and do different things.

I would really like to work with international organisations trying to make the world a bit more peaceful. I would really love to do some work with NATO, especially now NATO is very focused on Eastern Europe and Lithuania, my home country.

Vincent Pope

Studying MEng Electronic Engineering (with Integrated Masters) Recognised for talent, not background

I've been awarded The Institution of Engineering and Technology Horizons Bursary, which recognises students who don't have a traditional, A-level background, but who are still talented. People come to university from all sorts of backgrounds, I think it's important to reward talented people no matter what path they took to get here.

My aspirations are to have a solid, reliable career. That's what Essex means to me: better career prospects and a well-laid out future.





Jake Millar

BA History 2016 **Building resilience alongside a degree**

Coronavirus has had a seismic impact on all elements of our lives, and the heritage sector is no different. By March 2020, most exhibitions and cultural events were closed, cancelled or postponed. As the sector recovers, it's vitally important to safeguard all forms of cultural heritage.

My time at Essex has undoubtedly helped me through a difficult period after graduation, particularly the resilience that I built throughout my studies. I am sure that the lessons learned at Essex will continue to be incredibly valuable, as will the brilliant friendships I made.

Anca Sticlaru

Studying MSD Computer Science **Published researcher taking every opportunity**

When I was told my research paper was going to be published, that definitely made me smile! I've been working with my supervisor on this for around a year, and it makes me so happy to see my work being valued and published in a conference.

The amount of opportunities at Essex is great. I try and get involved with lots of things, from volunteering to jobs. It's the amount of opportunities I take which will build my entire career from scratch.





Angela Muruli

Bsc Biomedical Science 2016 Working for women's empowerment

Essex was my insurance choice and I honestly didn't plan to study here. But Essex has a buzz that gives you FOMO if you're on the fringes. Everything happens here, from campaigns for social justice to student socials. My course included lots of opportunities to work with others and the campus has great spaces for collaboration.

In my final year, I worked for the VTeam, an awesome cohort of students who apply their developing skills to positively impact our community. We supported countless charity initiatives.

My Essex education has given me determination. I am a Junior Program Analyst with the United Nations in Nigeria working on issues I was passionate about at Essex – women's rights and sustainable development.

My degree laid the foundation for collaboration, curiosity and self-motivation which will power me throughout my career – no doubt.

Whitney Joseph

LLB Law 2012 Committed to helping her peers up the career ladder

I'm state-educated, black and live with sickle cell disease. I knew I had to challenge stereotypical narratives about my identity to achieve my goals. I qualified as a solicitor in 2018 and now work for a London law firm as a banking and finance associate.

Whilst at Essex I took almost every work experience opportunity that I could. I was a Law Peer Mentor and volunteered at the Essex Law Clinic. The supportive atmosphere at the University helped me to flourish – and now I want to help others. I'm a social mobility ambassador for the Law Society of England and Wales, encouraging lawyers from all backgrounds. I also run a platform called The City Prescription, a network for professionals pursuing competitive careers whilst managing long-term health conditions.



OUR RESEARCH



Consider the challenges of the world around us – and tackle them head on. As an Essex student you'll be taught by specialists who are actively engaged in their field.

Exit Through the App Store – COVID – 19 Rapid Review

How will society be affected by the kind of widescale digital track and trace system used during the COVID-19 pandemic? Is the technology being employed responsibly and fairly? Essex Sociology academic and Big Data expert Professor Peter Fussey contributed to this review, conducted by the Ada Lovelace Institute.

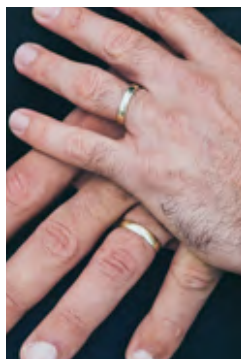
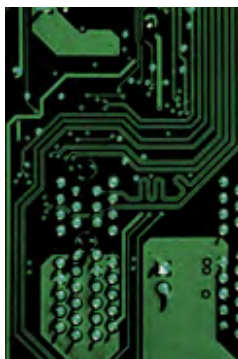
Holding Hands: Experiences of LGBTQ Relationship Partners

Academics from the Department of Psychosocial and Psychoanalytic Studies are conducting a study of internalised homophobia and transphobia within the LGBTQ community, interviewing participants about their feelings on holding hands in public. The investigators aim to raise awareness and challenge prejudice faced by the community.





A research community that's committed to positive change.



Finding a new frequency; uncovering the Marconi archives

Our specialists in public history are helping to develop a digital strategy to improve public access to the Marconi archive. Guglielmo Marconi was a pioneer of radio technology in the 19th century and the archives offer an inside perspective on his research into wireless technology, the driver of modern communication.

Commitment to the protection of our coral reefs

Essex's Coral Reef Research Unit is the most extensive of its kind in the UK. The team links with researchers from locations in Australia, Egypt, Honduras, Indonesia, Israel, New Zealand and the USA to find solutions to the threat environmental change poses to this unique and irreplaceable natural habitat – and the long-term environmental implications of its destruction.

Developing resilient robots for hazardous conditions

Essex computer scientists, led by Professor Klaus McDonald-Maier, are spearheading revolutionary research into a new type of AI, which will enable robots to function for longer in radioactive environments. Essex is a contributor to the National Centre for Nuclear Robotics, which aims to tackle the problem of cleaning up the UK's 4.9 million tonnes of nuclear waste.

Unlocking the drama of the pandemic

Working remotely with cast and crew from across the UK and Italy, playwright Dr Mary Mazzilli created a new play, inspired by the challenges and isolation of lockdown life. Broadcast as part of Colchester's Mercury Theatre Online Festival, *Bright Azzuro Sea* focuses on the lives of a family pulled apart by the circumstances of COVID-19.

OUR CAMPUSES

The University of Essex is based at three campuses Colchester, Southend-on-Sea and Loughton. Your course will be based at one campus location.

Colchester to:

- Central London:
45 minutes to 1 hour
by train, 1 hour and
40 minutes by car.
- Stansted: 1 hour and
15 minutes by bus,
50 minutes by car.
- Southend Airport:
1 hour and 15 minutes
by train, 1 hour by car.
- Gatwick Airport: 1 hour
and 50 minutes by train,
1 hour and 40 minutes
by car.
- Heathrow Airport:
2 hours and 10 minutes
by train, 1 hour and
55 minutes by car.

Southend to:

- Central London:
45 minutes to 1 hour
by train, 1 hour and
20 minutes by car.
- Southend Airport:
15 minutes by bus,
10 minutes by car.
- Stansted Airport: 1 hour
and 30 minutes by bus,
1 hour by car.
- Gatwick Airport: 2 hours
by train, 1 hour and
10 minutes by car.
- Heathrow Airport:
2 hours by train, 1 hour
and 20 minutes by car.

Loughton to:

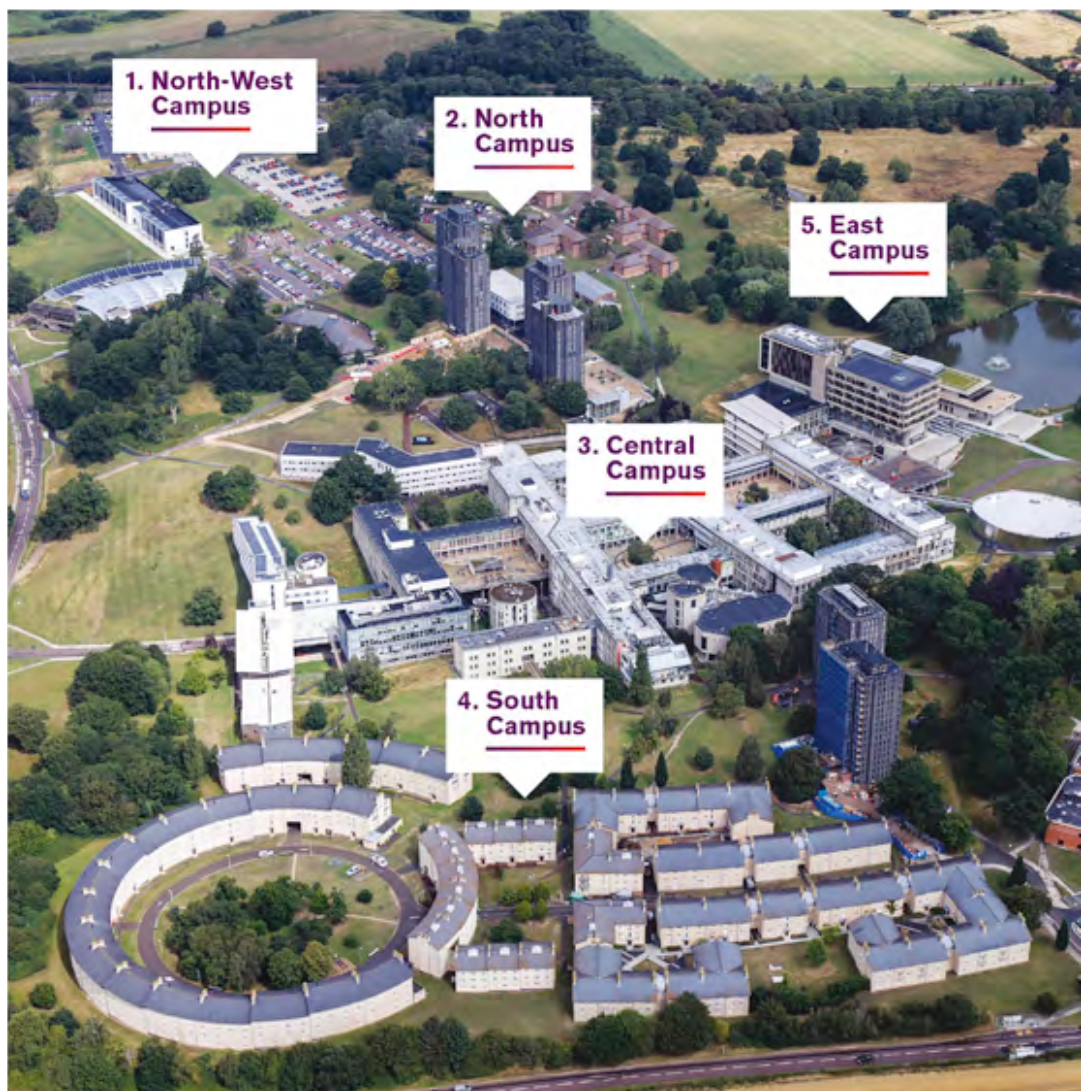
- Central London:
42 minutes by train,
45 minutes by car.
- London City Airport:
40 minutes by train,
25 minutes by car.
- Stansted Airport: 1 hour
and 28 minutes by train,
30 minutes by car.
- Gatwick Airport: 1 hour
and 30 minutes by train,
1 hour and 20 minutes
by car.
- Heathrow Airport:
40 minutes by train,
1 hour by car.



-  Colchester
-  Southend
-  Loughton



COLCHESTER CAMPUS





1. North-West Campus

- Accommodation
- Essex Business School
- Day Nursery
- Knowledge Gateway
- Innovation Centre

2. North Campus

- Accommodation
- Health Centre
- Teaching Centres

3. Central Campus

- Lecture Theatre Building
- Academic departments
- Lecture and seminar rooms
- Students' Union
- Bars, cafés and restaurants
- Shops and Post Office

4. South Campus

- Accommodation
- STEM Centre

5. East Campus

- Ivor Crewe Lecture Hall
- Silberrad Student Centre and SU Creative Studios
- Albert Sloman Library
- Lakeside Theatre and Café
- Parkland and lakes

6. South-East Campus

- Essex Sport Arena
- Sports Centre and Gym
- Synthetic turf pitch
- Tennis courts

7. Wivenhoe Park

- Wivenhoe House Hotel
- Edge Hotel School
- Essex Collection of Art from Latin America (ESCALA)
- Campus allotment
- Sports pitches and parkland



Space to
learn, relax
and explore.



Life as we
know it?
Never at
Essex.

EXPLORE

Our Colchester Campus is home to the majority of students. A hive of activity, in the midst of tranquil parkland.



**Everything
you need in
one place.**



**The perfect
environment
for study
and
socialising.**

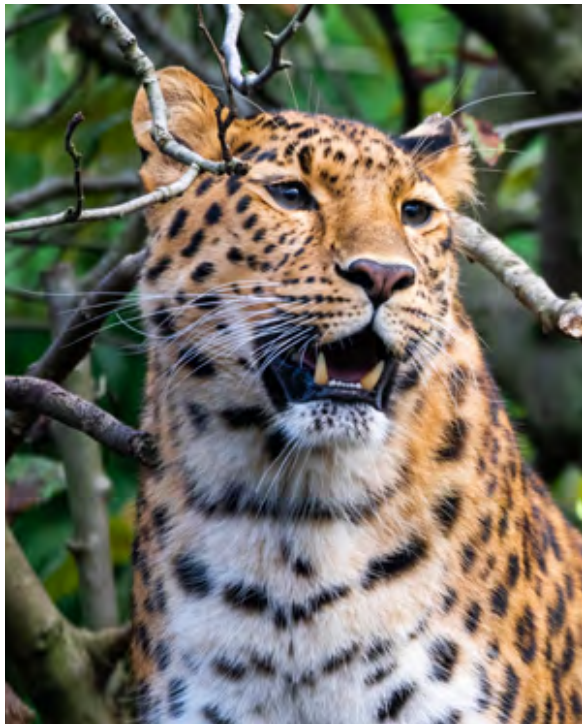


Our campus has the resources and facilities you need to get the most out of your education. The library offers six floors of books, archive materials, e-resources – and space for quiet study. For collaborative work, there are numerous tech-enabled group pods across campus. Science and Engineering students benefit from our cutting-edge STEM Centre, while Health and Social Care students can access practice hospital wards. We also offer a robotics arena, a virtual trading floor, translation labs, media suites and fully-equipped performance spaces.

Whatever you need to live life and have fun, you'll find it at Essex. The campus reflects our vibrant community; it's the site of international cultural celebrations and our weekly street market. There are restaurants and cafés to suit every taste. For nights out, there's the club, bars, cinema or theatre. The multi-faith space answers your spiritual needs. Essex Sport Arena hosts professional games and sporting society events. You also have an NHS health centre on campus and a day nursery for young children.

BEYOND CAMPUS

Essex has so much to offer. Superb venues for arts, music and culture. Independent shops and great nightlife. Countryside walks and coastline water sports. There's so much to see and do in the historic town of Colchester – and more to explore when you travel further afield...



First city, first steps

Colchester is Britain's oldest recorded town. Explore our history as the Roman capital of Britain and uncover the secrets that lie within the Medieval-era Colchester Castle.

For contemporary culture, head to arts venue Firstsite – Grayson Perry has exhibited here. Watch a play at the Mercury Theatre, while the Odeon and Curzon screen blockbusters and art-house classics for your viewing pleasure.



**There's
always
something
new to do
in Essex.**



Shop, sip or skate

Head to the High Street for your favourite big brands or the quirky lanes for indie boutiques. Going out-out? There are pubs and clubs galore, and top gigs at the Colchester Arts Centre.

On a sunny day chill at Castle Park, visit Colchester Zoo or maybe head to picturesque Wivenhoe for a drink on the quay. But there's no need for rain to stop play – Rollerworld, Jump Street and Dice and a Slice are all student favourites.

And the rest...

Water sports on Mersea Island, rowboats at Dedham Vale, seaside fun at Clacton, miles of beautiful coast and acres of countryside – and all just a short train ride from London.

SOUTHEND CAMPUS





7. Clifftown Theatre

1. The Forum

- The Learning Hub
- Student Services
- Public and academic library
- Lecture and seminar rooms

2. The Gateway Building

- Academic departments
- In-house doctor and dentist
- Lecture and seminar rooms
- Students' Union lounge

3. Southend Central Station

- Connections to Leigh-on-Sea, London and Lakeside Shopping Centre

4. University Square Accommodation

- Supermarket
- International shops

5. High Street

- Cinema
- Cafés and restaurants
- Post Office
- Chain stores and independent shops

6. Southend Victoria Station

- Connections to Colchester, London and Southend Airport for flights across Europe

7. Clifftown Theatre

- East 15 Acting School
- Prittlewell Square Gardens
- The Railway Hotel music venue

8. Seafront

- Southend Pier
- Adventure Island amusement park
- Beach and promenade



University
life by
the sea.



Space for
study and
practise.

EXPLORE

Southend offers a quality university experience in the heart of a lively seaside town.



Connections to London and Europe.



Socialise, shop and sight-see.

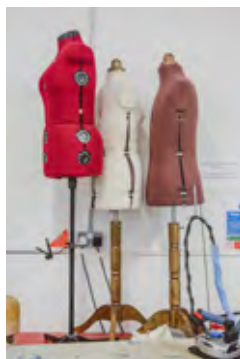


The Forum is our 24-hour learning hub, with a library of over 150,000 titles. There are further computer labs, study spaces, rehearsal rooms and a media suite to be found in The Gateway Building. The Clifftown Theatre, a stunning converted Gothic church, hosts East 15 productions and professional touring companies. The Dental Skills lab provides cutting-edge training equipment, while nursing students have access to a mock ward. And all students can take some time out at the Students' Union Lounge.

Southend's seven miles of seafront boasts a sandy beach, aquarium and Adventure Island theme park. Plus there's shopping, parks, and a great variety of nightlife to enjoy. Two railway stations provide excellent train links to London and the airport offers direct flights to many European destinations.



Base for
many
East 15
courses.



Located in
leafy East
London.



LOUGHTON

Situated within a stunning location, our students perfect their craft within a truly inspirational setting.



Train for a career on stage or behind the scenes.



Space to rehearse, research and perform.



London's West End is a tube ride away.



The site boasts 28 rehearsal spaces, dance studio, radio recording room, café and common room, editing suites, library, screening rooms and the professional-standard, 130-seat Corbett Theatre.

Roding House contains a studio theatre, further rehearsal rooms and the costume department. Stage and Production Management is based in Unit Four, housing workshops and the props department.

East 15 students live off site and our Student Services Team can help with finding accommodation. The lively Loughton area is ideal for reaching central London via the Underground, but also borders the peaceful retreat of nearby Epping Forest.

VISIT US



A close-up photograph of a glass filled with orange juice. The glass has a gold-colored band around its middle and the word 'Aloha' in a gold script font, with a pineapple illustration integrated into the letter 'o'. The background is blurred, showing a person's arm and a red object.

OPEN DAYS

Open Days are one of the best ways to find out if Essex is the right choice. They give you the chance to ask questions about your subject, discover what opportunities lie outside your studies – from travel and work placements, to sport and social life – and to see if we are the right home for you.

Our 2021 Open Day Dates

Colchester Campus

- Saturday 10 July TBC
- Saturday 18 September
- Saturday 23 October

Southend Campus

- Saturday 16 October

Campus Tours

If getting to our campuses just isn't on the cards right now, check out the virtual tours. essex.ac.uk/visit-us/cant-visit-us

WELCOME HOME



If you're going to live away from home for the first time, you need to make a choice that's right for you. Take a look at our student accommodation and start packing for moving day.

The accommodation costs on the following pages show the 2021-22 costs per week. It's likely that our rental charges for 2022-23 will increase from these amounts.



**Places
guaranteed
for all first
years –
more on
page 39.**

**Various
room
designs to
suit your
needs and
budget.**

**Studios,
single
rooms – all
benefit from
fully fitted
kitchens.**

UNIVERSITY QUAYS



Cost per week: £151.69 - £216.72

Location: Colchester Campus

- En suite facilities
- 15 minute walk to campus
- 4 – 8 rooms per flat
- Premium rooms (bigger bed), double rooms and self-contained apartments available

Peaceful surroundings and a pleasant walk to campus.

THE HOUSES



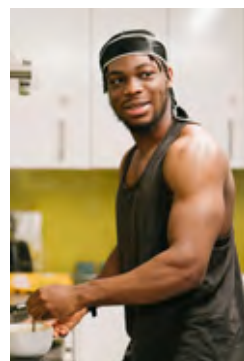
Cost per week: £145.46 - £157.99

Location: Colchester Campus

- En suite facilities
- 5 minute walk to campus
- 4 – 6 students per flat
- Adapted, twin, newly refurbished (enhanced) and premium (bigger bed) rooms available

Ideal for those who want a quieter lifestyle, surrounded by nature.

SOUTH TOWERS



Cost per week: £107.80

Location: Colchester Campus

- Shared bathroom facilities
- 2 minute walk to campus
- 5 – 16 rooms per flat
- Newly refurbished (enhanced)

Suits those who like a busy social life (and a new kitchen).

NORTH TOWERS



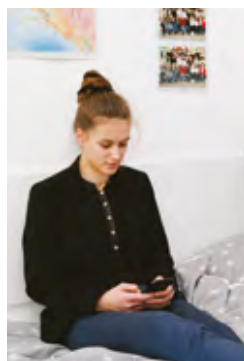
Cost per week: £105.21

Location: Colchester Campus

- Shared bathroom facilities
- 2 minute walk to campus
- 5 – 16 rooms per flat
- Newly refurbished (enhanced)

**Roll straight out of bed
and into lectures.**

THE COPSE



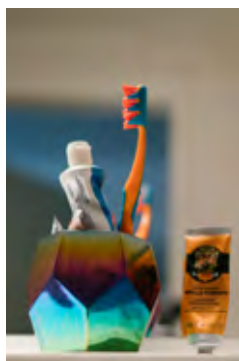
Cost per week: £171.29 - £200.83

Location: Colchester Campus

- En suite facilities
- 10 minute walk to campus
- 4 – 12 rooms per flat
- Studios and adapted rooms available
- Premium rooms (bigger bed) and premium plus rooms (bigger bed and more space) available

**Space and style meet in
our newest residence.**

THE MEADOWS



Cost per week: £158.69 - £199.01

Location: Colchester Campus

- Shared and en suite bathroom facilities depending on flat
- 10 minute walk to campus
- 5 – 12 rooms per flat
- Premium rooms (bigger bed) and self-contained apartments available

Enjoy a relaxed atmosphere and a short walk to main campus.

SOUTH COURTS



Cost per week: £160.30 - £165.83

Location: Colchester Campus

- En suite facilities
- 5 minute walk to campus
- 4 – 14 rooms per flat
- Adapted, twin, newly refurbished (enhanced) and premium (bigger bed) rooms available

Offers a 5-minute commute to lectures and the gym.

WOLFSON COURT



Cost per week: £110.60

Location: Colchester Campus

- Shared bathroom facilities
- 5 minute walk to campus
- 7 rooms per flat
- Hand basin in your room

**Close to the centre
of campus with a small
community atmosphere.**

UNIVERSITY SQUARE



Cost per week: £152.67 - £188.30

Location: Southend Campus

- En suite facilities
- 5 minutes from main university buildings and the town centre
- 11 rooms per flat
- Studio rooms and adapted studios available

**Based right on campus in
the heart of Southend.**

THE DETAILS

You are guaranteed accommodation for your first year of study – just make sure you've had your place confirmed, accepted your academic offer, any conditions have been met, your application is received by the published deadline, and you accept your accommodation offer.

Where price variations are shown, the price varies depending on how many rooms are in the flat.

Living on campus

Your rent includes: Wi-Fi, heating, hot water, contents insurance, electricity and the cleaning of communal areas (such as kitchens). On our Colchester Campus, an Essex Sport Silver membership package is also included.

Rooms are normally let for the full academic year from late September to the end of June, which means that even if you're away from the University during the winter and spring vacations, you don't have to remove your things from your room.

We also offer:

- Single gender flats
- Adapted rooms
- Self-contained accommodation for single or double occupancy
- Shared twin en suite rooms and studios

We cannot guarantee accommodation for first year students who are accompanied by a partner, but we'll do our very best to help. Just make sure you get in touch as early as you can if you think you need to talk to us about any of this.

askthehub@essex.ac.uk



Settling in

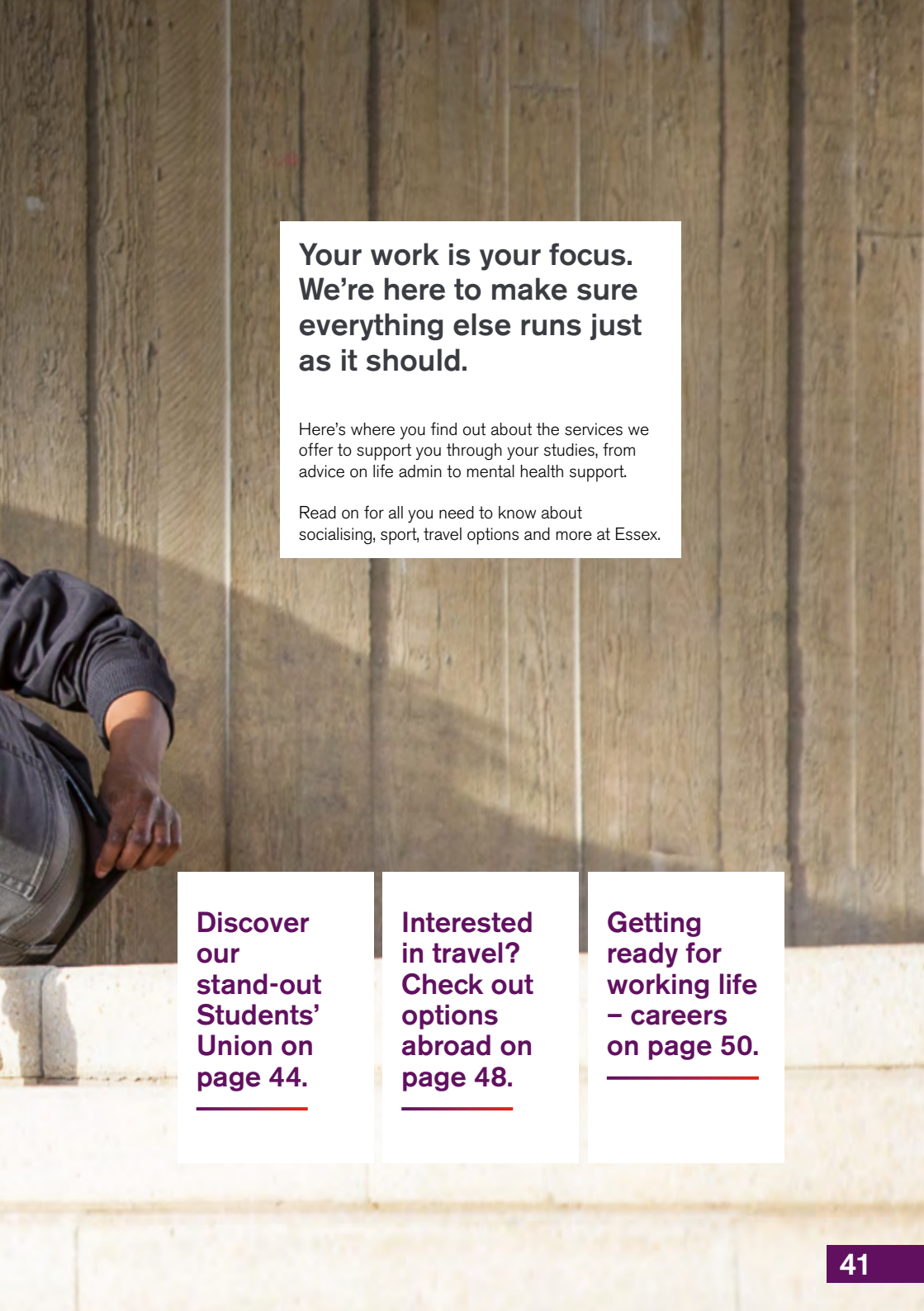
You'll have a Residents' Assistant based in your university accommodation who'll meet you soon after you arrive. Their job is to make sure that you have opportunities to get involved in university life and social activities, and provide support outside of office hours.

Living nearby

The Students' Union offers a house-finding service, SU Homes, from our Colchester Campus. They provide support for everyone moving off campus including helping you to find your ideal property, and completing property and landlord checks to ensure your safety.

BEYOND YOUR CLASSROOM



A person is sitting on a wooden bench, leaning against a wooden wall. The person is wearing a dark blue long-sleeved shirt and dark jeans. The background is a wooden wall with vertical planks. The lighting is warm, suggesting sunlight. The person's hand is resting on their lap.

**Your work is your focus.
We're here to make sure
everything else runs just
as it should.**

Here's where you find out about the services we offer to support you through your studies, from advice on life admin to mental health support.

Read on for all you need to know about socialising, sport, travel options and more at Essex.

**Discover
our
stand-out
Students'
Union on
page 44.**

**Interested
in travel?
Check out
options
abroad on
page 48.**

**Getting
ready for
working life
– careers
on page 50.**

SUPPORT SERVICES

Starting a degree is a huge commitment – but everyday life can't stay paused in the meantime. We are here for you if you need some information, advice or support to succeed, stay healthy and happy.



Student Services

If you need practical advice, a confidential conversation or general information, our Student Services Hub is the place to go. Ask us about health and well-being, accommodation, funding, exam stress and much more.



**Helping
you live
your best
student life.**



Access and Disability

If you have a disability, medical condition or specific learning difficulty, a specialist adviser will be on hand to talk you through alternative exam arrangements, lecture recordings, assistive software, access and more. You'll also have a specific contact within your department and an SU Disabled Students' Officer to represent you.

Mental and emotional health

Our Student Wellbeing and Inclusivity Service is here to help – you can access our drop-in service without making an appointment. We also offer counselling with a partner organisation that you can access via telephone or Zoom. We run workshops and seminars on topics such as managing study-related stress and anxiety, and can refer students to specialist services when needed.

Mature students

Many of our students are mature students, so we have a real understanding of the challenges that come when combining studies with other responsibilities. Meeting other mature students is a great support, so at Essex we organise welcome events, specifically for mature students.

Commuting students

We have many students living in the local area and beyond who make the daily trip onto campus. It's important to know that everything on campus is for you too, and that you can join in university life to the full.

Lockers, showers and study rooms are all available on campus. When studying at home you will have access to a wide range of study materials via your online student portal, including teaching materials created by your Essex tutors.

More information

For a full breakdown of support services, including information for care leaver students, estranged students, student carers and students with children, visit our website.

STUDENTS' UNION



Students run the Students' Union. You become a member when you become an Essex student. You decide what gets stocked in our stores, what drinks we serve in our bars, and what we campaign for together.





**Ranked 5th
Best SU
(Whatuni
Student
Choice
Awards
2020).**



On campus

Our SU offer a wide range of services on our Colchester Campus, complete with shops, cafés, bars, a nightclub and restaurants. If you're based in Southend you can grab a coffee, play Xbox or PlayStation and chill out between lectures at the SU Lounge.

Societies

There are over 130 different societies at Essex, all part of a diverse, welcoming and friendly community where you can find almost anything to take part in outside of your studies. We have around 40 cultural societies, over 30 related to subject areas and numerous activity-based societies, from Harry Potter to heavy metal appreciation. And, if we don't have a group that represents your interests, the SU will help you set up your own.

Get involved

If you want to give your time, skills and all-round awesomeness to a special cause, you need to join the VTeam. The volunteering branch of the SU can connect you with all kinds of projects; why not run a coding session for kids, clean up the beach or lend a paw at the zoo?

Stay active

Sport more your thing? We have over 40 teams for you to train, compete and socialise with. From those you might expect like football, rugby and netball, to sports you have never tried before. From Fencing to MMA, we've plenty to keep you busy.

And that's not all...

We make sure you are never bored with activities day and night to keep you occupied. Our cinemas show the latest films, we have quizzes in the bar, open forums for heated debates and much more.

SPORT AT ESSEX

Whatever your sporting level or interest, our facilities have something for you.

Colchester facilities

Covering 50 acres, our outdoor sports area includes an 18-hole disc golf course and all-weather tennis courts, plus there's plenty of space to have a kick about with friends or enjoy a run around the lakes. In 2018 we opened our Sport Arena, built to international sporting standards. It boasts seating for 1,655 spectators and includes 20 courts for basketball, netball, volleyball, badminton and futsal.

Southend facilities

As a student at our Southend Campus you're bang in the centre of Southend with access to a vast range of activities. Kitesurfing and swimming are a stone's throw away if you can brave the cold! Plus, our exclusive arrangement with Simply Gym in Southend offers you 24/7 access to the gym equipment and fitness classes so you can keep fit around your studies at a time to suit you.





**Whatever
your skill
level, get
active at
Essex.**



Gym and fitness classes

Our on-campus gym in Colchester is our most popular sporting facility, with 160 workout stations and more than 100 fitness classes per week – that's enough to keep you busy whether you're a gym newbie or a seasoned workout pro!

Try something new, we dare you

If you want to try a new sport but don't fancy joining a team, no worries! Active Campus sessions are open to all and free for Essex Sport members. They're a great way to dip your toe in the workout water without committing to regular training. Plus, our 'Learn To' courses are ideal if you want to try a new activity.

Sports teams

Looking for something more? Our Students' Union is home to the Essex Blades – over 40 sports clubs who compete locally and nationally. Be warned, you're highly likely to develop a strong allegiance to the Blades, especially around Derby Day!

Top of your game

If sport is more than a hobby to you, welcome home. At Essex we can support your personal development, offering coaching opportunities in an official or volunteer capacity. We also offer work placements within Essex Sport, plus our strong partnerships with sports organisations and national governing bodies mean we can help build your CV with practical sporting experiences.

If you're looking to combine education with the pursuit of a sporting career after graduation, sports bursaries worth up to £3,000 a year are available.

YOUR MIND TAKING FLIGHT

Options for exploring have been pretty limited over the last few years. Now may be the time to take the opportunity to study or work abroad and/or learn a new language here at Essex at no extra cost – a whole world of opportunity awaits.





Time to
see the
world at
long last.



Want to travel the world as part of your degree? Most of our courses have study abroad options, where you can complete an additional year, or term, of your course at a partner university. We offer year abroad placement opportunities too!

Courses with the option for a study abroad year will have an **A** symbol on our subject pages.

How about learning a language on top of your studies? Our Languages for All programme gives you the chance to learn a new language whilst at Essex, for free! All our students are offered the opportunity to learn a language alongside their studies, for a year, at no extra cost – so why not?

essex.ac.uk/lfa

WORK EXPERIENCE

We know the importance of preparing you for life after graduation, which is why we do everything we can to help you achieve your goals.

Placements

Many of our degrees offer the option of a placement year, giving you the opportunity to gain real-world experience relevant to your chosen career path. Your course will extend to four years, with year three taken in placement – in the UK or abroad.

Courses with the option for a placement year will have a **P** symbol on our subject pages.

Employability skills

We ensure employability skills are embedded throughout your studies with many degrees offering the option of work based learning and employability modules.



**Develop a
range of
skills and
transform
your
prospects.**



Paid work on campus

We have a number of work opportunities available on campus.

- Get paid to share your student experience – apply to be a Student Ambassador. You'll work at events such as Applicant Days and Open Days as the face of Essex.
- If you'd rather get experience in hospitality or retail between your studies, there are plenty of roles available within our SU establishments. Our shop, SU Bar and restaurants are often recruiting.
- We offer part-time, short-term placements in various departments across the University on our Frontrunners scheme, giving you the chance to gain significant work experience right here at Essex!

ESSEX PATHWAYS

We offer a range of degrees with a foundation year for UK and EU students, so whatever your educational background, you could have a future with us.



If you don't meet the entry requirements for a particular degree course, then starting with a foundation year could be more appropriate. It's designed to improve your academic skills and subject-specific knowledge, and fully prepare you for undergraduate study. If you successfully complete your foundation year, you're guaranteed a place on the first year of your degree.

Typically, courses with a foundation year pathway require 72 UCAS points from at least 2 A-levels, with some courses having additional requirements. If this doesn't quite fit your situation, we'd still like to hear from you. We approach our foundation year applications on a case-by-case basis, so get in touch.

On our subject pages you can see which of our courses are available with a foundation year, and those which offer both foundation year and a year abroad. Look for the icons **F** or **FA**.



INTEGRATED MASTERS

Take your learning one step further with our Integrated Masters courses.

These courses combine three years at undergraduate level with a final year at postgraduate level, so upon completion you'll be graduating with a masters-level qualification in your chosen subject. With many subjects you can add an additional year to be spent either studying abroad or on a work placement. Check your subject page listing to see if an Integrated Master is available.

IMPORTANT STUFF



**Information you need
about making an
application and financing
your studies.**

For all the latest information on applying,
securing funding, and information for
international students simply go straight to
essex.ac.uk/undergraduate/applying-to-essex



APPLYING TO ESSEX



For further information on any of the topics listed, visit our website. If you have any other questions, please get in touch with our Undergraduate Admissions office.

The Application Process

How do I apply?

Applications for the majority of our courses can be made via either [UCAS.com](https://www.ucas.com) or our Direct Admissions Form on our website. If you are applying to other institutions or already have a UCAS application, you will not be able to use our Direct Application Form.

The exception to this is applications to BA/FdA Therapeutic Communication and Therapeutic Organisations, which must be made via our Direct Application Form. The majority of our courses at East 15 Acting School require an application to be submitted directly to the school as well as a UCAS or Direct Application Form.

When should I apply?

If you are applying for October 2022 entry, you can do so from September 2021 onwards. The majority of our courses will remain open until 30 June 2022. A small number of our courses may close on or after 15 January 2022.

Next steps

When we receive your application, it will be considered by our Admissions team. We will take into account your whole application – including your qualifications, personal statement and reference.

If you applied through UCAS, your UCAS Track will officially inform you when a decision has been made on your application. You'll also receive information from us if we make you an offer. Once you've received a decision from all your choices, UCAS will ask you to accept one offer as your firm (first) choice and one offer as your insurance (second) choice via UCAS Track.

If you applied via our Direct Admissions Form you will receive all the information you need from us via email. If we make you an offer via email you will need to follow the instructions provided in your offer letter to accept your offer via your myEssex applicant portal.

Applicant Days

If you receive an offer from us, you will be invited to attend an Applicant Day. These days offer you the chance to find out more about your course, and the University.

Some of our courses require a compulsory interview before an offer can be made. If you have applied to one of our degrees which requires an interview, and you are successful in being invited for interview, we will be in touch via email.

essex.ac.uk/visit-us/applicant-days

Confirming your place

If your offer is conditional and you go on to meet the conditions specified within the communicated deadlines, we'll confirm your place if you have accepted us as your firm or insurance choice.

If your results don't quite meet the conditions, we may still confirm your place, or you may be offered an alternative course. You may be offered a degree with a foundation year if you are a UK or EU applicant ([see page 52](#)).

Flexible offers

Eligible applicants could receive a dual offer which includes a flexible offer. This means that if you choose Essex as your firm choice, you are guaranteed to have your place confirmed should you meet the Flexible Offer stipulated in your offer letter. A Flexible Offer will specify alternative entry requirements to those published in our prospectus and online, meaning that if your grades aren't what you hoped for when you receive your results, you could still secure a place with us.

If you have any questions about anything related to admissions, contact us via admit@essex.ac.uk

Entry requirements

UK students

Typical entry requirements are described on each subject page of this prospectus. Entry requirements for courses which include a foundation year are lower than those listed on the subject pages, please see page 52 and our website.

The wide range of qualifications that we consider include the following:

- A-levels
- BTEC qualifications
- International Baccalaureate Diploma and Certificates
- QAA-approved Access to HE Diplomas
- Open University courses
- Professional qualifications

If you have not already completed your qualifications, our typical offer will require you to achieve specific grades in three A-levels (or equivalent). We are also happy to consider your application if you are taking a mixture of A-levels and BTECs, or qualifications other than A-levels. If your results fall short of the offer level by a small margin, your results in other qualifications such as the Extended Project, a Core Maths qualification or an additional AS-level may be taken into account. We want you to stand the best chance of benefitting from an Essex Education. We will also consider your application if you are retaking one or more exams.

International Baccalaureate

Regarding the International Baccalaureate Diploma, we will accept either *Mathematics: Analysis and Approaches* or *Mathematics: Applications and Interpretation*, in the same way as outlined on the subject pages for *Mathematics and Mathematics/Maths Studies*.

Requirements for all applicants

Our general entrance requirements are a minimum of two full A-levels. Some courses also have additional A-level or GCSE subject requirements which you'll find on the relevant subject pages. If you don't currently meet, or are unsure if you meet, our requirements, contact our Undergraduate Admissions office for advice.

EU and international students

If you're from outside the UK, we can make offers based on EU and international qualifications that are considered equivalent to our standard A-level offer.

essex.ac.uk/international/applying-to-essex

English language requirements

You are required to have GCSE English at grade C/4 or above (or equivalent). You can demonstrate your level of English language by achieving a specified score in IELTS or another equivalent test that we accept. You don't need to achieve this level before making your application, but it will be one of the conditions of your offer.*

For current details of our English language requirements, including UK Visas and Immigration minimum component scores, please see the following information.

For applicants who require a student visa (excluding nationals of majority English speaking countries)

essex.ac.uk/see/english-student-visa-required

For applicants who do not require a student visa and nationals of majority English-speaking countries

essex.ac.uk/see/english-student-visa-not-required

Pre-sessional and English language courses

We offer pre-sessional English language courses at the University of Essex International College (in partnership with Kaplan International Pathways) which can be taken before your degree if you are an EU or international student and do not meet our English language entry requirements. Upon successful completion of the pre-sessional you won't need to retake an additional English language qualification, and if you've met all other offer conditions you will be able to proceed on to your degree.

essex.ac.uk/see/english-student-visa-required

Languages

First-language speakers of a modern language will not be able to study that language as part of a Modern Language degree.

To study Portuguese as a major language, applicants must have either an A-level (or equivalent) in Italian, Spanish or Portuguese, or have a first-language fluency in Italian, Romanian or Spanish.



Other Useful Information

Immigration and applying for a visa

If you require a visa to study in the UK, you'll need to apply under the Student route of the UK Government's Points Based Immigration System (PBIS). EU students will need to apply for entry clearance under the UK's Student Immigration Rules, unless you already have settlement. For up-to-date information check our website.

Pathways courses

Many courses are available to UK and EU applicants with a foundation year, [see page 52](#). For information on pathway courses for international applicants at the University of Essex International College, please [see page 115](#).

Deferred entry

The majority of our courses enable you to take a gap year. You can apply in the normal way but you should indicate your year of entry on your UCAS application or Direct Application Form. Applications for deferred entry will be considered on the same basis as those of entry in the year which you apply.

Transferring to Essex from another university

We're happy to consider applications for entry to the second or final year of study for most of our courses. Further details can be found on our website.

DBS and Occupational Health Checks

Some courses require you to undergo a Disclosure and Barring Service check (DBS), when working with children and/or vulnerable adults, and an occupational health check.

If this is a requirement of a course, it will be stated on our website course pages.

Disability and Health

When you apply you can declare whether you have a disability or health issues so we can provide support. Declaring a disability or health issue will not form part of our decision making and we are dedicated to offering equal opportunities to all. We have a team of disability and wellbeing advisors, dyslexia tutors, and other specialist staff. [See page 43](#) for more information.

Admissions Policy

For information about our Undergraduate Admissions Policy, visit our website.

*The information on these pages is correct at the time of printing (March 2021) but is subject to change. Always check our website for the most up-to-date information.

FEES AND FUNDING



Your tuition fees are used to provide you with a transformational education. They help us to create the stimulating and cutting-edge environment that supports the world-class research and education we offer at Essex.

Tuition Fees

UK Students

- Our fees for the academic year 2022- 2023 for UK and Channel Islands students will be £9,250.
- Fees will increase for each academic year of study. For full-time undergraduate students with a Home fee status any fee increases during your programme of study will be limited to the annual increase in the RPI-X index.

International and EU Students

- Our full time international and EU fees for the academic year 2022-2023 are £17,700 - £20,650. For a full list of all international tuition fees please check our website.
- If you are an EU student, we encourage you to research financial support offered in your home country. National grants or loans may be provided by your government or local careers service.
[gov.uk/student-finance](https://www.gov.uk/student-finance)
- For students commencing their studies in the 2022-23 academic year, your fees will increase for each year of study. This annual increase will be either 5% or the annual increase in the RPI-X index, whichever is higher.
If you would like advice on whether you'd be considered as an international student in relation to your tuition fees please contact our Undergraduate Admissions office.
admit@essex.ac.uk

- The UK Council for International Student Affairs (UKCISA) can also give you advice and information on fee statuses. **ukcisa.org.uk**
If you require a student visa to study in the UK, as part of the visa application process you may be asked to produce evidence of your ability to pay tuition fees and to cover living expenses during your course. Find out more about the current Home Office requirements on our website.
essex.ac.uk/immigration

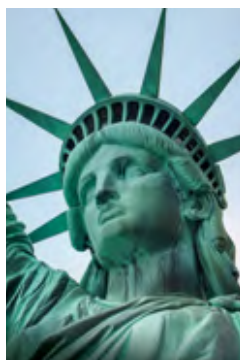
Access to loans for UK Students

- The UK Government provides UK students with a tuition fee loan (subject to eligibility criteria), meaning you will not have to pay your tuition fees upfront or during your course.
- UK students can also take out a maintenance loan to help cover living expenses for your time at university.
- You will only start repaying a maintenance loan when your income reaches a certain level, and if your income drops below this at any point your repayments will be stopped.
- We offer scholarships and bursaries to support students, including those from lower income households. Additional support for UK students includes bursaries for care leavers and students with refugee status. Find out more about funding opportunities on our website.
essex.ac.uk/ug/scholarship
- If you've previously studied at a higher education institution this may affect the amount of financial support available to you. Please contact our Student Funding team with any queries about this or anything else funding related.
funding@essex.ac.uk
- If you're interested in earning some extra money during your studies there are plenty of part-time work opportunities at Essex. See [page 51](#) to find out more about jobs offered within the University.

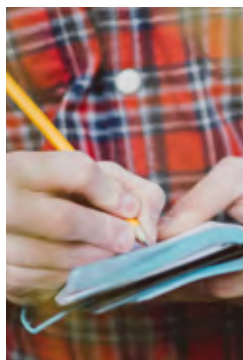
Healthcare Grants

From September 2020, students studying the nursing and allied health subjects will receive a non-repayable and non-means tested (universal) grant of at least £5,000 a year, in addition to existing mainstream student support. Funding will be offered to continuing students as well as new course entrants.

thefundingclinic.org.uk/undergraduate



SUBJECTS



For full
details on
courses
and entry
requirements,
go online.



ACCOUNTING



Accounting is much more than book-keeping – it’s about accountability. Not just to financiers and investors, but increasingly to a wider range of stakeholders, the public and our planet. At Essex Business School, we want you to use numbers to drive positive change. Our aim is to inspire you to be both business-minded and socially responsible.

Course	Entry requirements
BA Financial Economics and Accounting 3 A P F	GCSE: Mathematics C/4
BSc Accounting 3 A P F	A-levels: BBB
BSc Accounting and Finance 3 A P F	BTEC: DDM, depending on subject studied – advice on acceptability can be provided
BSc Accounting and Management 3 A P F	IB: 30 points, including Standard Level Mathematics or Maths Studies grade 4
BSc Accounting with Economics 3 A P F	
Integrated Master in Accounting: Accounting and Finance 4 P	GCSE: Maths C/4
	A-levels: ABB
	BTEC: DDD, depending on subject and units studied – advice on acceptability can be provided
	IB: 32 points, including Standard Level Mathematics or Maths Studies grade 4

3 3 Year Course **4** 4 Year Course **A** + Year Abroad **P** + Placement Year **F** + Foundation Year

Entry requirements for courses with a Foundation Year are lower than shown on this page, visit our website for more information.



“I have loved both sides of my degree; the theory of accounting plus studying corporate responsibility links into my career goals so well.”

Debbie Yeboa, BSc Accounting and Management



ACTING, PRODUCING AND BACKSTAGE



Personal discovery. Intuition. Technical skill. These are the key elements of an actor's craft and our guiding principles. East 15 Acting School will provide you with the skills and confidence you need to build a successful career in the performing arts, whether you work onstage or behind the scenes.

Courses taught at Loughton Campus

Course	Entry requirements
BA Acting ³ BA Acting (International) ³ BA Acting and Contemporary Theatre ³ BA Stage and Production Management ³	A-levels: CDD, or the equivalent in UCAS tariff points, to include 2 full A-levels BTEC: MMP
Cert HE Theatre Arts ¹	A-levels: E or equivalent qualification

Courses taught at Southend Campus

Course	Entry requirements
BA Acting and Community Theatre ³ BA Acting and Stage Combat ³ BA Physical Theatre ³	A-levels: CDD, or the equivalent in UCAS tariff points, to include 2 full A-levels BTEC: MMP
BA World Performance ³ BA Creative Producing (Theatre and Short Film) ³	A-levels: BBC, or the equivalent in UCAS tariff points, to include 2 full A-levels BTEC: DDM IB: 28 points
Cert HE Theatre Arts ¹	A-levels: E or equivalent qualification

³ 3 Year Course ¹ 1 Year Course

For all courses on this page you will need to pass an interview, audition or physical workshop – the type of assessment required depends on the course applied for, please see the East 15 website east15.ac.uk for full details.

ACTUARIAL SCIENCE



Actuarial science teaches you the art of turning risk into opportunity and encourages you to delve into your passion for practical problem-solving. You'll apply mathematical and statistical skills to tackle insurance, finance, commerce and government challenges. Throughout your course you'll explore probability, portfolio management and contingencies.

Course	Entry requirements
BSc Actuarial Science 3 A P F	A-levels: BBB, including Mathematics or Further Mathematics Please note that we are unable to accept A-level Use of Mathematics in place of A-level Mathematics IB: 30 points, including Higher Level Mathematics grade 5
BSc Economics and Mathematics 3 A P F	
BSc Finance and Mathematics 3 A P F	
Integrated Master in Science: Actuarial Science and Data Science 4	A-levels: ABB, including Mathematics or Further Mathematics Please note we are unable to accept A-level Use of Mathematics in place of A-level Mathematics IB: 32 points, including Higher Level Mathematics grade 5

3 3 Year Course **4** 4 Year Course **A** + Year Abroad **P** + Placement Year **F** + Foundation Year

Entry requirements for courses with a Foundation Year are lower than shown on this page, visit our website for more information.

AMERICAN STUDIES



Founded on the principles of 'life, liberty and the pursuit of happiness', the United States is a collision of star-spangled ideals and problematic realities. Connect topics and approaches from politics, literature, film, art, economics, history and philosophy to develop your knowledge of a country with unparalleled cultural and diplomatic influence.

Course	Entry requirements
BA American Studies (United States) 3 A P F FA	A-levels: BBB, including an essay-based subject
BA American Studies (United States) with Film 3 A P F FA	BTEC: DDM, depending on subject studied – advice on acceptability can be provided
BA Criminology and American Studies 3 A P F FA	IB: 30 points, including a Higher Level essay-based subject grade 5

3 3 Year Course (includes a term abroad) **A** + Year Abroad **P** + Placement Year **F** + Foundation Year **FA** + Foundation Year + Year Abroad
Entry requirements for courses with a Foundation Year are lower than shown on this page, visit our website for more information.



“The interdisciplinary nature of my degree gave me a wide range of perspectives and skills. I most enjoyed my time abroad studying in Washington DC.”

Francesca Burgess, BA American Studies and
MA Theory and Practice of Human Rights



ART HISTORY



Our world is now dominated and driven by visual media; understanding it has never been more challenging. You will gain a foundation in art and architecture from the Renaissance to the present day, and also learn about examples of visual culture that are often overlooked, such as protest banners and tattoos. We also house the most comprehensive collection of art from Latin America in Europe.

Course	Entry requirements
BA Art History 3 A P F BA Art History and History 3 A P F BA Art History, Visual Culture and Media Studies 3 A P F BA Art History, Heritage and Museum Studies* 3 A P F FA BA Art History and Modern Languages A F BA Art History with Modern Languages A F BA Curating 3 A P F BA Curating, Heritage and Human Rights* 3 A P F FA BA Curating with History* 3 A P F FA BA Curating with Politics* 3 A P F FA BA Film Studies and Art History 3 A P F BA Literature and Art History 3 A P F BA Philosophy and Art History 3 A P F	A-levels: BBB BTEC: DDM, depending on subject studied – advice on acceptability can be provided IB: 30 points
Integrated Master in Art History 4 A P	A-levels: ABB BTEC: as above but DDD IB: 32 points

3 3 Year Course **4** 4 Year Course **A** + Year Abroad **P** + Placement Year **F** + Foundation Year **FA** + Foundation Year + Year Abroad

*Subject to approval

Entry requirements for courses with a Foundation Year are lower than shown on this page, visit our website for more information.

BIOCHEMISTRY



Every component of life is beautifully connected and studying biochemistry allows you to appreciate the processes of life at a molecular level. You are taught by an international team of experts at the forefront of their field, and in your final year you contribute to projects in our state-of-the-art research labs, learning to think and behave like a scientist.

Course	Entry requirements
BSc Biochemistry 3 A P F	<p>GCSE: Mathematics C/4</p> <p>A-levels: BCC, including Chemistry and a second science or Mathematics</p> <p>BTEC: DDD, depending on subject and units studied – advice on acceptability can be provided</p> <p>IB: 28 points, including Higher Level Chemistry and a second science or Mathematics grade 4, plus Standard Level Mathematics or Maths Studies grade 4</p>
Integrated Master in Science: Biochemistry and Biotechnology 4 A P	<p>GCSE: Mathematics C/4</p> <p>A-levels: BBB including Biology and Chemistry</p> <p>BTEC: as above</p> <p>IB: 30 points, including Higher Level Biology and Chemistry grade 5, and Standard Level Mathematics or Maths Studies grade 4</p>

3 3 Year Course **4** 4 Year Course **A** + Year Abroad **P** + Placement Year **F** + Foundation Year

Entry requirements for courses with a Foundation Year are lower than shown on this page, visit our website for more information.

93% of our Biochemistry students expressed overall satisfaction with their course.

NSS 2020

BIOLOGICAL SCIENCES



There has never been a more exciting time to be a biologist. Interactive biology brings together all the tools of modern life sciences to unravel the complexity of living systems. It covers the breadth of biology from molecules and cells to whole organisms and ecosystems.

Course	Entry requirements
BSc Biological Sciences 3 A P F	GCSE: Mathematics C/4 A-levels: BCC, including Biology BTEC: DDD, depending on subject and units studied – advice on acceptability can be provided IB: 28 points, including Higher Level Biology grade 4 and Standard Level Mathematics or Maths Studies grade 4

3 3 Year Course **A** + Year Abroad **P** + Placement Year **F** + Foundation Year

Entry requirements for courses with a Foundation Year are lower than shown on this page, visit our website for more information.

Biology at Essex is ranked 10th in the UK for overall student satisfaction.

NSS 2020

BIOMEDICAL SCIENCE



Biomedical science applies the concepts of biochemistry and cell biology to the study of disease. You learn about the onset, progression, diagnosis and treatment of diseases and are taught by research-active academic experts. You graduate ready to move into a career within the profession and with a strong grounding for entry on to postgraduate medicine programmes.

Course	Entry requirements
BSc Biomedical Science 3 P F BSc Applied Biomedical Science (NHS placement) P	GCSE: Mathematics C/4 A-levels: BCC, including Chemistry or Biology and a second science or Mathematics BTEC: DDD, depending on subject and units studied – advice on acceptability can be provided IB: 28 points, including Higher Level Chemistry or Biology and a second science or Mathematics grade 4, plus Standard Level Mathematics or Maths Studies grade 4
Integrated Master in Science: Biomedical Science 4 A P	GCSE: Mathematics grade C/4 A-levels: BBB, including Chemistry or Biology and a second science or Mathematics BTEC: as above IB: 30 points, including Higher Level Chemistry or Biology and a second science or Mathematics grade 5, plus Standard Level Mathematics or Maths Studies grade 4

3 3 Year Course **4** 4 Year Course **P** + Placement Year **F** + Foundation Year

Entry requirements for courses with a Foundation Year are lower than shown on this page, visit our website for more information.

BUSINESS AND MANAGEMENT



Business and management at Essex is not just about driving profit for global corporations. We want our students to understand the role of the responsible manager, the value of the employee and how to turn an innovative idea into a successful enterprise. This is business that goes beyond the bottom line.

Courses taught at Colchester Campus

Course	Entry requirements
BSc Management and Marketing 3 A P F	GCSE: Mathematics C/4
BA Business Management and Modern Languages 3	A-levels: BBB
BA Business Management with a Modern Language 3	BTEC: DDM, depending on subject studied – advice on acceptability can be provided IB: 30 points, including Standard Level Mathematics or Maths Studies grade 4
Integrated Master in Management: Marketing and Management 4 A P	GCSE: Mathematics C/4, A-levels: ABB, BTEC: DDD, depending on subject studied – advice on acceptability can be provided, IB: 32 points, including Standard Level Mathematics or Maths Studies grade 4

Course taught at Southend Campus

Course	Entry requirements
BBA Business Administration 3 A P F	GCSE: Mathematics C/4
BSc International Business and Entrepreneurship 3 A P F	A-levels: BBB
BSc International Business and Finance 3 A P F	BTEC: DDM, depending on subject studied – advice on acceptability can be provided IB: 30 points, including Standard Level Mathematics or Maths Studies grade 4

3 3 Year Course **A** + Year Abroad **P** + Placement Year **F** + Foundation Year

Entry requirements for courses with a Foundation Year are lower than shown on this page, visit our website for more information.

CHILDHOOD STUDIES



Children today face many challenges; navigating online media, understanding a culturally diverse society, academic pressures and so on. You will build psychological, sociological and psychoanalytic knowledge and skills, laying the foundation for a career making a difference to children's early experiences.

Course	Entry requirements
BA Childhood Studies 3 A P F	<p>A-levels: BBC</p> <p>BTEC: DDM, depending on subject studied – advice on acceptability can be provided</p> <p>IB: 29 points</p> <p>Access to HE Diploma: 45 level 3 credits at Merit or above (in relevant pathway)</p> <p>Other qualifications (including vocational qualifications) may also be accepted</p>

3 3 Year Course **A** + Year Abroad **P** + Placement Year **F** + Foundation Year

Entry requirements for courses with a Foundation Year are lower than shown on this page, visit our website for more information.

You must also have a satisfactory enhanced Disclosure and Barring Service Check (DBS) – this is organised by the University.



“Working with autistic children is the main focus of where I want to go with my degree.”

Victoria Lanum, BA Childhood Studies



COMPUTER SCIENCE



Our lives would be unrecognisable without computing. Technology drives society, and computer science is developing faster than ever before. Computer games create imaginary worlds; AI and robotics enable you to understand how things and people behave and evolve. Social media, face recognition and cloud computing all have a basis in computer science.

Course	Entry requirements
BSc Computer Science 3 A P F	GCSE: Mathematics C/4
BSc Computer Games 3 A P	A-levels: BBB
BEng Computer Networks 3 A P	BTEC: DDM, depending on subject studied – advice on acceptability can be provided
BEng Computer Systems Engineering 3 A P	IB: 30 points, including Standard Level Mathematics or Maths Studies grade 4
BEng Computers with Electronics 3 A P F	
Integrated Master in Science: Computer Science 4 P	GCSE: Mathematics C/4
	A-levels: ABB
	BTEC: DDD, depending on subject and units studied – advice on acceptability can be provided
	IB: 32 points, including Standard Level Mathematics or Maths Studies grade 4

3 3 Year Course **4** 4 Year Course **A** + Year Abroad **P** + Placement Year **F** + Foundation Year

Degree apprenticeships are available in this subject area. Visit essex.ac.uk/apprenticeships for more information.

Entry requirements for courses with a Foundation Year are lower than shown on this page, visit our website for more information.

CREATIVE WRITING



Are writers born or made? We teach you the skills you need to effectively express your ideas, and help you find and define your voice. You'll learn from practicing writers who will nurture your imagination and promote experimentation in your work. We don't believe good writers are born, they're made at Essex.

Course	Entry requirements
BA Creative Writing 3 A P F BA Literature and Creative Writing 3 A P F BA Film and Creative Writing 3 A P F	A-levels: BBB, including one essay-based subject BTEC: DDM, depending on subject studied – advice on acceptability can be provided IB: 30 points, including a Higher Level essay-based subject grade 5
Integrated Master in Literature: Creative Writing 4	A-levels: ABB, including one essay-based subject BTEC: DDD, depending on subject studied – advice on acceptability can be provided IB: 32 points, including a Higher Level essay-based subject grade 5

3 3 Year Course **4** 4 Year Course **A** + Year Abroad **P** + Placement Year **F** + Foundation Year

Entry requirements for courses with a Foundation Year are lower than shown on this page, visit our website for more information.

**We are ranked top 20 in the UK
for creative writing.**

Complete University Guide 2020

CRIMINOLOGY



If you're interested in building a better, fairer society, criminology may be the subject for you. You will engage with some of the most pressing dilemmas facing society today around crime, social control, punishment, rights and citizenship. Take the first step towards improving our justice system as your criminological imagination helps you see the world in a completely new way.

Course	Entry requirements
BA Criminology 3 A P F	A-levels: BBB
BA Criminology with Criminal Law 3 A P	BTEC: DDD, depending on subject studied – advice on acceptability can be provided
BA Criminology with Social Psychology 3 A P	IB: 30 points
BA Criminology with Counselling Skills 3 A P	
BA Sociology and Criminology 3 A P F	
BA Journalism and Criminology 3 A P	A-levels: BBB, including one essay-based subject
	BTEC: DDM, depending on subject studied – advice on acceptability can be provided
	IB: 30 points, including a Higher Level essay-based subject grade 5
BA Criminology and American Studies* 3 A P F	See American Studies, page 67
History and Criminology	See History, page 88
Integrated Master in Sociology: Criminology 4 A P	A-levels: ABB
	BTEC: DDD*, depending on subject studied – advice on acceptability can be provided
	IB: 32 points

3 3 Year Course **4** 4 Year Course **A** + Year Abroad **P** + Placement Year **F** + Foundation Year

*3 year variant includes a term abroad.

Entry requirements for courses with a Foundation Year are lower than shown on this page, visit our website for more information.

DATA ANALYTICS



Data is the new lifeblood of our society. From medicine to government offices, and market research to the environment; the collection and analysis of data is crucial to understanding how to create products and services. Data science, data analytics and statistics is about doing detective work, and your investigations will inform important decisions and predict new trends.

Course	Entry requirements
BSc Data Science and Analytics 3 A P F BSc Statistics 3 A P F BSc Mathematics with Computing 3 A P F	A-levels: BBB, including Mathematics Please note that we are unable to accept A-level Use of Mathematics in place of A-level Mathematics IB: 30 points, including Higher Level Mathematics grade 5
BSc Sociology with Data Science 3 A P F	See Sociology, page 108
Integrated Master in Science: Actuarial Science and Data Science 4 Integrated Master in Science: Mathematics and Data Science 4	A-levels: ABB, including Mathematics Please note we are unable to accept A-level Use of Mathematics in place of A-level Mathematics IB: 32 points, including Higher Level Mathematics grade 5

3 3 Year Course **4** 4 Year Course **A** + Year Abroad **P** + Placement Year **F** + Foundation Year

Entry requirements for courses with a Foundation Year are lower than shown on this page, visit our website for more information.

94% of our Mathematical Sciences students expressed overall satisfaction with their course.

NSS 2020

DRAMA



We think theatre can change the world. Through a combination of workshops and seminars, you receive a thorough grounding in classical and contemporary texts, as well as practices that are key to theatre and performance. Our varied modules include; devising, playwriting, tragedy, and theatre and stage management.

Course	Entry requirements
BA Drama 3 A P F BA Drama and Literature 3 A P F BA Film and Drama 3 A P F	A-levels: BBB, including one essay-based subject BTEC: DDM, depending on subject studied – advice on acceptability can be provided IB: 30 points, including a Higher Level essay-based subject grade 5
Integrated Master in Literature: Drama and Scriptwriting 4	A-levels: ABB, including one essay-based subjects BTEC: DDD, depending on subject studied – advice on acceptability can be provided IB: 32 points, including a Higher Level essay-based subject grade 5

3 3 Year Course **4** 4 Year Course **A** + Year Abroad **P** + Placement Year **F** + Foundation Year

Entry requirements for courses with a Foundation Year are lower than shown on this page, visit our website for more information.

We are ranked 3rd in the UK for drama.

Guardian University Guide 2021

ECONOMICS



Financial crises. Unemployment. Immigration. Economics at Essex focuses on the material wellbeing of human societies and challenges the standard paradigms of economics. By asking difficult questions we break intellectual boundaries, pioneering solutions to issues of global concern.

Course	Entry requirements
BA or BSc Economics 3 A P F BA Economics with Language Studies 3 F BA Economics with a Modern Language 4 A P BSc Economics with Computing 3 A P BA or BSc Economics with Psychology 3 A P BA or BSc Financial Economics 3 A P F BA or BSc International Economics 3 A P F BA or BSc Management Economics 3 A P F	GCSE: Mathematics B/5 A-levels: BBB BTEC: DDM, depending on subject studied – advice on acceptability can be provided IB: 30 points, including Standard Level Mathematics or Maths Studies grade 5
BSc Economics with Mathematics 3 A P F	See BA Economics above, plus B in A-level Mathematics IB: 30 points including Higher Level Maths grade 5
BA Financial Economics and Accounting 3 A P BA History and Economics 3 A P F BA Business Economics 3 A P	See BA Economics above, but C/4 in GCSE Mathematics
Integrated Master in Economics: Economics 4 A P Integrated Master in Economics: Financial Economics 4 A P Integrated Master in Economics: International Economics 4 A P Integrated Master in Economics: Management Economics 4 A P	GCSE: Mathematics B/5 A-levels: ABB BTEC: DDD, depending on subject and units studied – advice on acceptability can be provided. IB: 32 points, including Standard Level Mathematics or Maths Studies grade 5

3 3 Year Course **4** 4 Year Course **A** + Year Abroad **P** + Placement Year **F** + Foundation Year

Entry requirements for courses with a Foundation Year are lower than shown on this page, visit our website for more information.

ENGINEERING



Electronics is essential to our modern world of instant global communication. The internet, innovative telecommunications and powerful, inexpensive computing have all been realised through advances in electronics. Our students are the people who develop the technology we use in our daily lives.

Course	Entry requirements
BEng Electronic Engineering 3 A P F BEng Communications Engineering 3 A P F BEng Robotic Engineering 3 A P BEng Mechatronic Systems 3 A P	GCSE: Science C/4 A-levels: BBB, including Mathematics BTEC: DDM, depending on subject and units studied – advice on acceptability can be provided IB: 30 points, including Higher Level Mathematics grade 5 and Standard Level Science grade 4
BEng Neural Engineering with Psychology 3 A P F	GCSE: Mathematics C/4 A-levels: BBB BTEC: DDM, depending on subject studied – advice on acceptability can be provided IB: 30 points, including Standard Level Mathematics or Maths Studies grade 4
Integrated Master in Engineering: Electronic Engineering 4 P Integrated Master in Engineering: Communications Engineering 4	GCSE: Science C/4 A-levels: ABB, including Mathematics BTEC: DDD, depending on subject and units studied – advice on acceptability can be provided IB: 32 points, including Higher Level Mathematics grade 5 and Standard Level Science grade 4

3 3 Year Course **4** 4 Year Course **A** + Year Abroad **P** + Placement Year **F** + Foundation Year

Degree apprenticeships are available in this subject area. Visit essex.ac.uk/apprenticeships for more information.

Entry requirements for courses with a Foundation Year are lower than shown on this page, visit our website for more information.

ENGLISH LANGUAGE AND LINGUISTICS



Everything starts with language and we explore it from all angles such as, how language is acquired and developed in childhood, and how different dialects develop and are perceived in society. Depending on your course choice, you will gain a variety of skills, including the skills you need for Teaching English as a Foreign Language (TEFL).

Course	Entry requirements
BA English Language and Linguistics 3 A P F BA English Language and Literature 3 A P F BA English Language with Media Communication 3 A P BA Linguistics 3 A P F BA Language Studies and Linguistics 3 F BA Modern Languages and English Language 4 A P F BA Teaching English as a Foreign Language (TEFL) 3 A P F	A-levels: BBB BTEC: DDM, depending on subject studied – advice on acceptability can be provided IB: 30 points
BA Linguistics with Data Science* 3 A P F	GCSE: Mathematics C/4 A-levels: BBB BTEC: DDM, depending on subject studied – advice on acceptability can be provided IB: 30 points
Integrated Master in Linguistics: English Language and Linguistics 4 A P	A-levels: ABB BTEC: DDD, depending on subject studied – advice on acceptability can be provided IB: 32 points

3 3 Year Course **4** 4 Year Course **A** + Year Abroad **P** + Placement Year **F** + Foundation Year

*Subject to approval

Entry requirements for courses with a Foundation Year are lower than shown on this page, visit our website for more information.

ENTREPRENEURSHIP



Entrepreneurship is all about ambition, creation and innovation. Discover the ways in which people and organisations generate economic growth and social transformation. We will develop your practical skills through business simulation games and interactive projects, empowering you to launch your own business or take your entrepreneurial spirit into the world of work.

Course

BSc International Business and Entrepreneurship

3 A P F

Entry requirements

GCSE: Mathematics C/4

A-levels: BBB

BTEC: DDM, depending on subject studied – advice on acceptability can be provided

IB: 30 points, including Standard Level Mathematics or Maths Studies grade 4

3 3 Year Course **A** + Year Abroad **P** + Placement Year **F** + Foundation Year

Entry requirements for courses with a Foundation Year are lower than shown on this page, visit our website for more information.



“My favourite part of the course has been the business strategy simulation game. I had to use analytics, statistics and my own gut instinct to solve challenges.”

Myles Wood-McGrath, BSc International Business and Entrepreneurship



EUROPEAN STUDIES



There has never been a more important time to study Europe. Taking an interdisciplinary approach, you will investigate and debate issues that are of vital importance to the future of the UK, Europe, and the world. If you want to study a continent with a rich cultural heritage and be an activist within a changing political landscape, European Studies will help you to make a positive impact.

Course	Entry requirements
BA European Studies 4 A P F	A-levels: BBB
BA European Studies with French 4 A F	BTEC: DDM, depending on subject studied – advice on acceptability can be provided
BA European Studies with German 4 A F	IB: 30 points
BA European Studies with Italian 4 A F	
BA European Studies with Spanish 4 A F	
BA European Studies with Politics 4 A F	
BA European Studies and Language Studies 3 F	
BA European Studies and Modern Languages 4 A F	

3 3 Year Course **4** 4 Year Course (inc Year Abroad) **A** + Year Abroad **P** + Placement Year **F** + Foundation Year

Entry requirements for courses with a Foundation Year are lower than shown on this page, visit our website for more information.

Some Foundation courses are available with a Year Abroad – go online for details.



“European Studies gives you the opportunity to study exactly what you want. And it brings in all subjects that are important in society.”

Sofie Pindsle, BA European Studies



FILM STUDIES



Alongside developing your knowledge of cinema cultures and theories, our dynamic programme of hands-on production experience gives you access to professional editing facilities, HD cameras and a dedicated cinema for screening student work. Our close links with film and TV industries mean excellent career prospects – and your coursework is the perfect way to start building your showreel.

Course	Entry requirements
BA Film Studies 3 A P F	A-levels: BBB, including one essay-based subject
BA Film Studies and Literature 3 A P F	BTEC: DDM, depending on subject studied – advice on acceptability can be provided
BA Film and Creative Writing 3 A P F	IB: 30 points, including a Higher Level essay-based subject grade 5
BA Film and Drama 3 A P F	
BA American Studies (United States) with Film 3 A P F	See American Studies, page 67
BA Film Studies and Art History 3 A P F	See Art History, page 68
BA History with Film Studies 3 A P F	See History, page 88

3 3 Year Course **A** + Year Abroad **P** + Placement Year **F** + Foundation Year

Entry requirements for courses with a Foundation Year are lower than shown on this page, visit our website for more information.

We are ranked top 10 in the UK for Film Studies (Dance, Drama and Cinematics).

Complete University Guide 2020

FINANCE AND BANKING



Forget what you think you know about stock markets; understanding financial markets can help alleviate hunger, predict civil unrest and avoid conflict. You'll learn how to manage investment portfolios, identify factors behind booms and crashes, and why the psychology of the investor is so important. Become a skilled and responsible practitioner and a force for good within the world of finance.

Course	Entry requirements
BSc Accounting and Finance 3 A P F	GCSE: Mathematics C/4
BSc Banking and Finance 3 A P F	A-levels: BBB
BSc Finance 3 A P F	BTEC: DDM, depending on subject studied – advice on acceptability can be provided
BSc Finance and Management 3 A P F	IB: 30 points, including Standard Level Mathematics or Maths Studies
BSc Finance and Mathematics 3 A P F	
BSc International Business and Finance 3 A P F	
LLB Law with Finance 3 A P	As other BSc courses but A-levels must include an essay-based subject
Integrated Master in Accounting: Accounting and Finance 4 A P	GCSE: Mathematics grade C/4 A-levels: ABB BTEC: DDD, depending on subject studied – advice on acceptability can be provided IB: 32 points, including Standard Level Mathematics or Maths Studies grade 4

3 3 Year Course **4** 4 Year Course **A** + Year Abroad **P** + Placement Year **F** + Foundation Year

Entry requirements for courses with a Foundation Year are lower than shown on this page, visit our website for more information.

GENETICS



Advances in genetics and genomics are transforming our understanding of biology and modern medicine. Explore the most intimate relationships between organisms revealed in their genome sequence and the complexities of epigenetics with experts in the field. Investigate the transformative potential of applications of genetics in stem cell research and gene editing.

Course

BSc Genetics **3 A P F**

Entry requirements

GCSE: Mathematics C/4

A-levels: BCC, including Biology

BTEC: DDD, depending on subject and units studied – advice on acceptability can be provided

IB: 28 points, including Higher Level Biology grade 4 and Standard Level Mathematics or Maths Studies grade 4

3 3 Year Course **A** + Year Abroad **P** + Placement Year **F** + Foundation Year

Entry requirements for courses with a Foundation Year are lower than shown on this page, visit our website for more information.



“I met some amazing lecturers that believed in me and pushed me to do my best. In my second year I conducted field experiments at the University of Illinois. It was an unforgettable experience.”

Elena Pelech, BSc Genetics



GLOBAL STUDIES



We need global thinking for global problems. The challenges facing the world today are profoundly international. From the migrant crisis to global warming, with a grounding in politics, history, philosophy, sociology, economics and cultural studies, you will be able to untangle international relationships and discern how the effects of globalisation are experienced at a local level.

Course	Entry requirements
Global Studies and Language Studies 3 F	A-levels: BBB, including one essay-based subject BTEC: DDM, depending on subject studied – advice on acceptability can be provided IB: 30 points, including a Higher Level essay-based subject grade 5
BA Global Studies 3 A P F	
BA Global Studies and Latin American Studies 4 A P F	
BA Global Studies and Modern Languages 4 A	
BA Global Studies with Latin American Studies 3 A P F	
BA Global Studies with Politics 3 A P F	
BA Global Studies with Business Management 3 A P F	
BA Global Studies with Human Rights 3 A P F	
BA Social Change 3 A P F	

3 3 Year Course **4** 4 Year Course **A** + Year Abroad **P** + Placement Year **F** + Foundation Year

Entry requirements for courses with a Foundation Year are lower than shown on this page, visit our website for more information.



“I appreciate the array of modules, focusing on different aspects of globalisation, ranging from history and economics to film and languages.”

Elisabeth Leopolseder, BA Global Studies



HISTORY



At Essex we don't agree that "history is written by the victors"; we dig deeper, give voice to the powerless and work to uncover a true understanding of the past. We ask what makes history, what gets left behind – and why. History at Essex feeds your curiosity, provokes you to raise new questions and delves into hidden histories.

Course	Entry requirements
BA History 3 A P F BA Modern History 3 A P F BA History with Film Studies 3 A P F BA History with Human Rights 3 A P F BA History and Criminology 3 A P F BA History and Literature 3 A P F BA History and Sociology 3 A P F BA Modern History and International Relations 3 A P F BA Modern History and Politics 3 A P F BA Philosophy and History 3 A P F	A-levels: BBB BTEC: DDM, depending on subject studied – advice on acceptability can be provided IB: 30 points
BA History and Economics 3 A P F	See Economics page 79
Integrated Master in History 4 A A P	A-levels: ABB BTEC: as above IB: 32 points

3 3 Year Course **4** 4 Year Course **A** + Year Abroad **P** + Placement Year **F** + Foundation Year

Entry requirements for courses with a Foundation Year are lower than shown on this page, visit our website for more information.

HOSPITALITY AND EVENTS MANAGEMENT



Build a network of industry links whilst developing your leadership and business management skills for the hospitality and events industry. You will also gain experience throughout your course in our four-star hotel, to enhance your employability and further your career.

Course	Entry requirements
BA Hotel Management* 2C BA Events Management with Hospitality* 2C BA Hospitality Management 3 A BA Events Management 3 A	96 UCAS tariff points including two full A-levels or equivalent GCSE: GCSE English C/4, or equivalent A-levels: CCC BTEC: MMM
FdA Hospitality Management† 2 FdA Events Management† 2	64 UCAS tariff points including one full A-level or equivalent GCSE: GCSE English C/4, or equivalent A-levels: DDE BTEC: MPP
BA Hotel Management (Top Up) 8M BA Events Management with Hospitality (Top Up) 8M	Level 5 qualification, such as FdA, HND or Advanced Diploma in a relevant field. Your eligibility will be determined during the admissions process.

2 2 Year Foundation Degree **2C** 2 Year Accelerated Course **A** + Year Abroad **8M** 8 Month Top Up

*Please note these two-year accelerated courses and foundation courses are not open to applicants that will need a student visa to study in the UK, due to work placement requirements.

†Subject to performance on the FdA you would have the opportunity to progress onto the final year of the relevant three-year BA degree. Contact Undergraduate Admissions or visit our course pages online for further information.

HUMAN RIGHTS



Human rights have no borders or boundaries. They are the global language of the world. Studying human rights gives you the confidence to advocate for individual and community rights, social justice and social change. Our approach is interdisciplinary, with the theory and practice of human rights embedded in our work.

Course	Entry requirements
LLB Law with Human Rights* 3 A BA Journalism with Human Rights 3 A P	A-level: BBB, including one essay-based subject BTEC: DDD, depending on subject studied advice on acceptability can be provided IB: 30 points, including a Higher Level essay-based subject grade 5
BA History with Human Rights 3 A P F BA Philosophy with Human Rights 3 A P F	A-levels: BBB BTEC: DDM, depending on subject studied – advice on acceptability can be provided IB: 30 points
BA Social Anthropology with Human Rights 3 A P BA Sociology with Human Rights 3 A P BA Politics with Human Rights 3 A P	A-levels: BBB BTEC: DDD, depending on subject studied – advice on acceptability can be provided IB: 30 points

3 3 Year Course **A** + Year Abroad **P** + Placement Year **F** + Foundation Year

*LLB Law with Human Rights can be combined with a placement year. You would be responsible for finding your placement, with the support and guidance of Student Development Services, in consultation with the School of Law.

Entry requirements for courses with a Foundation Year are lower than shown on this page, visit our website for more information.

JOURNALISM



Create and broadcast your own online content, radio, TV programmes and print in our multimedia newsroom, and explore new technologies and challenges. We place emphasis on good writing, independence, accuracy and ethical practice to prepare you for your career in journalism.

Course	Entry requirements
BA Multimedia Journalism* 3 A P	<p>GCSE: Mathematics and English C/4</p> <p>A-levels: BBB, including one essay-based subject</p> <p>BTEC: DDM, depending on subject studied – advice on acceptability can be provided</p> <p>IB: 30 points, including a Higher Level essay-based subject grade 5 and Standard Level Mathematics or Maths Studies grade 4</p>
<p>BA Journalism and Literature 3 A P</p> <p>BA Journalism and English Language 3 A P</p> <p>BA Journalism and Modern Languages 4 A</p> <p>BA Journalism and Politics 3 A P</p> <p>BA Journalism with Human Rights 3 A P</p> <p>BA Journalism and Criminology 3 A P</p> <p>BA Journalism and Sociology 3 A P</p>	<p>A-levels: BBB, including one essay-based subject</p> <p>BTEC: DDM, depending on subject studied – advice on acceptability can be provided</p> <p>IB: 30 points, including a Higher Level essay-based subject grade 5</p>

3 3 Year Course **4** 4 Year Course **A** + Year Abroad **P** + Placement Year

*Our flagship BA Multimedia Journalism degree offers the opportunity to gain the National Council for the Training of Journalists (NCTJ) Diploma.

LAW



Law affects all our relationships; with other people, with shops, banks and companies, and with governments. From company law and cybercrime, to music and medicine, our law degrees prepare you to put theoretical knowledge into practice. You'll gain valuable insight and experience from our lecturers who work with and advise the UN, the UK government and EU and foreign governments.

Course	Entry requirements
LLB Law 3 A P F LLB Law with Business 3 A P LLB Law with Criminology 3 A P LLB Law with Human Rights 3 A P LLB Law with Philosophy 3 A P LLB Law with Politics 3 A P	A-levels: BBB, including one essay-based subject BTEC: DDD, depending on subject studied – advice on acceptability can be provided IB: 30 points, including a Higher Level essay-based subject grade 5
LLB Law with Finance 3 P	GCSE: Mathematics C/4 A-level: BBB, including one essay-based subject BTEC: DDD, depending on subject studied – advice on acceptability can be provided IB: 30 points, including a Higher Level essay-based subject grade 5 and Standard Level Mathematics or Maths Studies grade 4
LLB English and French Law (Licence) 3 P	A-levels: ABB including A in French French Baccalaureat: 14 overall including 12 in English and 12 in French IB: 32 points, including Higher Level French Grade 6
LLB Law (Senior Status) 2	2.2 undergraduate degree (this is a conversion course for graduates of other disciplines)
Integrated Master in Law 4 A A P	A-levels: ABB, including one essay-based subject BTEC: as above IB: 32 points, including a Higher Level essay-based subject grade 5

2 2 Year Course **3** 3 Year Course **4** 4 Year Course **A** + Year Abroad **P** + Placement Year **F** + Foundation Year

Entry requirements for courses with a Foundation Year are lower than shown on this page, visit our website for more information.

LIBERAL ARTS



Liberal Arts gives you the freedom to stay curious, enabling you to study a range of interests, including, politics, art, philosophy, literature, human rights, film, languages and sociology. We will teach you to find connections between subjects that might seem unrelated to the untrained eye.

Course	Entry requirements
BA Liberal Arts 3 A P F FA BA Social Change 3 A P F FA	A-levels: BBB, including one essay-based subject BTEC: DDM, depending on subject studied – advice on acceptability can be provided IB: 30 points, including a Higher Level essay-based subject grade 5

3 3 Year Course **A** + Year Abroad **P** + Placement Year **F** + Foundation Year **FA** + Foundation Year + Year Abroad

Entry requirements for courses with a Foundation Year are lower than shown on this page, visit our website for more information.



“Liberal Arts expands your horizons and helped me discover what I really love doing – writing.”

Rachel Simson, BA Liberal Arts



LITERATURE



We love the classics, but we offer you the chance to broaden your literary knowledge. Study a diverse range of literature including First World War writing, Romantic poetry, US and Caribbean literatures, children's literature, and science fiction. Study your passion, improve your writing and research skills and develop the kind of intelligence employers always value.

Course	Entry requirements
BA Drama and Literature 3 A P F BA English Literature 3 A P F BA English and Comparative Literature 3 A P F BA English and United States Literature 3 A P F BA Film Studies and Literature 3 A P F BA Literature and Sociology 3 A P F BA Literature and Creative Writing 3 A P F	A-levels: BBB, including one essay-based subject BTEC: DDM, depending on subject studied – advice on acceptability can be provided IB: 30 points, including a Higher Level essay-based subject grade 5
BA History and Literature 3 A P F	See BA Drama and Literature above, but note that this course does not require an essay-based subject
Integrated Master in Literature: Literature 4 Integrated Master in Literature: Literature and Creative Writing 4	A-levels: ABB, including one essay-based subject BTEC: DDD depending on subject studied – advice on acceptability can be provided IB: 32 points, including a Higher Level essay-based subject grade 5

3 3 Year Course **4** 4 Year Course **A** + Year Abroad **P** + Placement Year **F** + Foundation Year

Entry requirements for courses with a Foundation Year are lower than shown on this page, visit our website for more information.



“The lecturers have a passion for what they teach. Thanks to all the chances I had to develop my skills, I found a career I really love.”

Siril Grini, BA English Literature



MARINE BIOLOGY



Dive into the complex world of coral reefs, deep-sea trenches, coastal lagoons, sea ice and tropical seagrass beds. Investigate the effects of environmental change on biodiversity with a field trip to the Coral Triangle – and in our on-site lab. Develop your skills in the latest ocean sampling techniques in Greece, and explore the Essex coastline.

Course	Entry requirements
BSc Marine Biology 3 A P F	<p>GCSE: Mathematics C/4</p> <p>A-levels: BCC, including Biology</p> <p>BTEC: DDM, depending on subject and units studied – advice on acceptability can be provided</p> <p>IB: 28 points, including Higher Level Biology grade 4 and Standard Level Mathematics or Maths Studies grade 4</p>
Integrated Master in Science: Tropical Marine Biology 4 A P	<p>GCSE: Mathematics: C/4</p> <p>A-levels: BBB, including Biology</p> <p>BTEC: DDD, depending on subject studied – advice on acceptability can be provided</p> <p>IB: 30 points, including Higher Level Biology grade 5 and Standard Level Mathematics or Maths Studies grade 4</p>

3 3 Year Course **4** 4 Year Course **A** + Year Abroad **P** + Placement Year **F** + Foundation Year

Entry requirements for courses with a Foundation Year are lower than shown on this page, visit our website for more information.



“I’m interested in how mankind can correct the wrongs we have done to our home. I loved the challenge of undertaking my own project.”

Gareth Thomas, BSc Marine Biology



MARKETING



Content creation. Trend analysis. Consumer ethics. Marketing at Essex is about so much more than influencers and brand manifestos. We'll help you to develop the skills you need to ensure your organisation thrives in a crowded global marketplace, without compromising its integrity and values in the pursuit of profit.

Courses taught at Colchester Campus

Course	Entry requirements
BSc Management and Marketing 3 A P F	GCSE: Mathematics C/4 A-levels: BBB BTEC: DDM, depending on subject studied – advice on acceptability can be provided IB: 30 points, including Standard Level Mathematics or Maths Studies grade 4
Integrated Master in Management: Marketing and Management 4 A A P	GCSE: Mathematics C/4 A-levels: ABB BTEC: DDD, depending on subject studied – advice on acceptability can be provided IB: 32 points, including Standard Level Mathematics or Maths Studies grade 4

Course taught at Southend Campus

Course	Entry requirements
BSc Marketing 3 A P F	GCSE: Mathematics C/4 A-levels: BBB BTEC: DDM, depending on subject studied – advice on acceptability can be provided IB: 30 points, including Standard Level Mathematics or Maths Studies grade 4

3 3 Year Course **4** 4 Year Course **A** + Year Abroad **P** + Placement Year **F** + Foundation Year

Entry requirements for courses with a Foundation Year are lower than shown on this page, visit our website for more information.

MATHEMATICS



Mathematics is the language that underpins the rest of science. Maths has a broad reach; beyond pure and applied mathematics and maths education, to the mathematical modelling of brain evolution to improve patient care – our research explores issues of global importance. This is your chance to explore issues that have a real impact on people's everyday lives.

Course	Entry requirements
BSc Mathematics 3 A P F BSc Economics and Mathematics 3 A P F BSc Finance and Mathematics 3 A P F	A-levels: BBB, including Mathematics Please note that we are unable to accept A-level Use of Mathematics in place of A-level Mathematics IB: 30 points, including Higher Level Mathematics grade 5
BSc Mathematics with Physics 3 A P	A-levels: BBB, including Mathematics and Physics Please note that we are unable to accept A-level Use of Mathematics in place of A-level Mathematics IB: 30 points, including Higher Level Mathematics and Higher Level Physics grade 5
Integrated Master in Mathematics 4	A-levels: ABB, including Mathematics Please note that we are unable to accept A-level Use of Mathematics in place of A-level Mathematics IB: 32 points, including Higher Level Mathematics grade 5

3 3 Year Course **4** 4 Year Course **A** + Year Abroad **P** + Placement Year **F** + Foundation Year

Entry requirements for courses with a Foundation Year are lower than shown on this page, visit our website for more information.

MODERN LANGUAGES



Studying languages at Essex opens the door to meeting new people, travelling the world and discovering new cultures. Build advanced language skills in years 1 and 2, using the latest technology in our multimedia labs. We will help you gain skills in translation, interpreting and subtitling in your final year, enhancing your employment prospects for life after Essex.

Course	Entry requirements
BA Modern Languages 4 F BA Language Studies 3 F BA French Studies and Modern Languages 4 F BA German Studies and Modern Languages 4 F BA Italian Studies and Modern Languages 4 F BA Spanish Studies and Modern Languages 4 F BA Modern Languages and English Language 4 F BA Modern Languages and Linguistics 4 F BA Modern Languages and Teaching English as a Foreign Language 4 F BA Spanish, Portuguese and Brazilian Studies 4 F BA Modern Languages with Latin American Studies 4 F BA International Relations and Modern Languages 4 F	A-levels: BBB BTEC: DDM, depending on subject studied – advice on acceptability can be provided IB: 30 points
Integrated Master in Modern Languages: Translation 4 Integrated Master in Modern Languages: European Languages and Translation 5	A-levels: ABB including language you wish to major in IB: 32 points including Higher Level grade 5 in the language you wish to major in

3 3 Year Course **4** 4 Year Course (inc Year Abroad) **5** 5 Year Course (inc Year Abroad) **F** + Foundation Year

Entry requirements for courses with a Foundation Year are lower than shown on this page, visit our website for more information.

NURSING: ADULT OR MENTAL HEALTH



Nursing at Essex is about far more than just gaining a degree. You'll join a community where you're treated as a professional from day one, and where dignity, respect and social justice are at the heart of all we do. We ensure our courses continually evolve to meet the needs of society, and you'll get real insight into healthcare delivery today.

Course	Entry requirements
BSc Nursing (Adult) 3 A BSc Nursing (Mental Health) 3 A	GCSE: Mathematics and English Language C/4 (or equivalent) A-levels: BBC BTEC: DDD Access to HE Diploma: 45 level 3 credits at Merit or above

3 3 Year Course **A** + Year Abroad

You must also have a satisfactory Occupational Health Check and enhanced Disclosure and Barring Service Check (DBS) – both of these are organised by the University.

If English is not your first language you will require IELTS 7.0 overall with 6.5 in writing and 7.0 in all other components.

As part of the selection process, you will be required to demonstrate a good knowledge and clear understanding of the NHS Constitution and its core values.

Degree apprenticeships are available in this subject area. Visit essex.ac.uk/apprenticeships for more information.

Ranked top 25 in the UK for nursing.

Guardian University Guide 2020

OCCUPATIONAL THERAPY



Occupational therapy can be used to enable people with physical, mental, social and occupational challenges to live full and satisfying lives. You'll learn through a blend of theory and practice, including placements in a variety of settings. We have a dedicated Community Living Space on campus where you can gain experience of using specialist equipment.

Course

BSc Occupational Therapy 3

Entry requirements

GCSE: 5 GCSEs at C/4, including Mathematics, English and Science (or equivalent)

A-levels: BBC

BTEC: DMM, depending on subject studied – advice on acceptability can be provided

Access to HE Diploma: 45 level 3 credits at Merit or above

3 3 Year Course

You must also have a satisfactory Occupational Health Check and enhanced Disclosure and Barring Service Check (DBS) – both of these are organised by the University.

If English is not your first language you will require IELTS 7.0, with a minimum of 6.5 in each element.

97% of our students are in professional employment or postgraduate study within six months of graduating from Essex.

Graduate Outcomes 2020

ORAL HEALTH SCIENCE



There is a growing need for skilled practitioners in oral health. Whether you are an aspiring dental hygienist or want to extend your existing skill set to become a dental therapist, we can help. You'll benefit from our dental skills lab, which allows you to develop your clinical skills whilst on campus, and from our diverse range of placements.

Course	Entry requirements
FdSc Oral Health Science 2	<p>GCSE: Mathematics, English and Science at C/4 (or equivalent). GCSE Science can be single Science or one of the following: Biology, Chemistry or Physics</p> <p>A-levels: CC, including one core science subject (Biology, Chemistry, Applied Science or Physics)</p> <p>BTEC: MPP in a science related subject</p> <p>Access to HE Diploma: 45 level 3 credits at Pass or above (in a relevant pathway)</p> <p>National Dental Nurse Certificate or Diploma in Dental Nursing (with minimum of two years experience taken for pre and post qualification employment)</p>
BSc Oral Health Science 1	<p>This course is only open to existing registered dental hygienists. Visit our website for more information.</p>

2 2 Year Foundation Degree **1** 1 Year Top-Up

You must also have a satisfactory Occupational Health Check and enhanced Disclosure and Barring Service Check (DBS) – both of these are organised by the University.

As part of the selection process, you will be required to demonstrate a good knowledge and clear understanding of the NHS Constitution and its core values.

PHILOSOPHY



At Essex, philosophy is for the curious, for those who want to challenge received wisdom and creatively explore new ways of thinking and acting. We believe that philosophy is all about addressing the existential questions of human life, and gaining a critical perspective on the challenges we face today.

Course	Entry requirements
BA Philosophy 3 A P F	A-levels: BBB
BA Philosophy, Religion and Ethics 3 A P F	BTEC: DDM, depending on subject studied – advice on acceptability can be provided
BA Philosophy and Art History 3 A P F	IB: 30 points
BA Philosophy and History 3 A P F	
BA Philosophy with Human Rights 3 A P F	
BA Philosophy and Law 3 A P F	
BA Philosophy and Literature 3 A P F	
BA Philosophy and Politics 3 A P F	
BA Philosophy and Sociology 3 A P F	
Integrated Master in Philosophy 4 A P	A-levels: ABB
	BTEC: DDD, depending on subject studied – advice on acceptability can be provided
	IB: 32 points

3 3 Year Course **4** 4 Year Course **A** + Year Abroad **P** + Placement Year **F** + Foundation Year

Entry requirements for courses with a Foundation Year are lower than shown on this page, visit our website for more information.

Some Foundation courses are available with a Year Abroad – go online for details.



“When I saw a module about death, God and the meaning of life, I knew I had to come here!”


Shannice Burton, BA Philosophy, Religion and Ethics



PHYSIOTHERAPY



Physiotherapy is a pioneering profession which helps to improve people's quality of life. Learn to use physical approaches to promote, maintain and restore physical, psychological and social wellbeing. Through partnership and negotiation, physiotherapists work with patients and fellow health professionals to maximise the potential of human function and movement.

Course	Entry requirements
BSc Physiotherapy 	<p>GCSE: 6 GCSEs at C/4, including Mathematics, English and Science (or equivalent)</p> <p>A-levels: BBB (to include a life science). The life science A-level subjects we accept: Biology, Chemistry, Human Biology, Physics, P.E., Psychology, Sociology or Sport Science.</p> <p>BTEC: DDD, depending on modules and subject studied – advice on acceptability can be provided</p> <p>Access to HE diploma: 24 Distinctions and 21 Merits with at least 12 Distinction credits in relevant Biological Science units</p>

3 Year Course

You must also have a satisfactory Occupational Health Check and enhanced Disclosure and Barring Service Check (DBS) – both of these are organised by the University.

As part of the selection process, you will be required to demonstrate a good knowledge and clear understanding of the NHS Constitution and its core values.



“Essex is the place where I learned what it means to be a physiotherapist. The knowledge I developed continues to have a positive impact in my practical experiences to date.”

Anthony Johnstone, BSc Physiotherapy



POLITICS AND INTERNATIONAL RELATIONS



We have always been the highest-rated politics department in the UK*, with research that casts light on aspects of life you might never ordinarily connect to politics. Do you want to know why earthquakes are deadlier where the Mafia is stronger? How mobile phone activity predicts riots? Ask an Essex political scientist.

*REF 2014, mainstream universities, THE 2014

Course	Entry requirements
BA Politics 3 A P F BA Global Politics 3 A P BA International Development 3 A P BA International Relations 3 A P F BA or BSc Politics with Business 3 A P BA Politics with Human Rights 3 A P BA Politics and International Relations 3 A P BSc Politics and International Relations 3 A P	A-levels: BBB BTEC: DDM, depending on subject studied – advice on acceptability can be provided IB: 30 points
BA Philosophy, Politics and Economics 3 A P BSc Politics with Data Science 3 A P BSc Economics and Politics 3 A P	See BA Politics above, plus C/4 in GCSE Mathematics
Integrated Master in Politics: Politics and International Relations 4 A P Integrated Master in Politics: International Relations 4 A P	A-levels: ABB BTEC: DDM, depending on subject studied – advice on acceptability can be provided IB: 32 points

3 3 Year Course **4** 4 Year Course **A** + Year Abroad **P** + Placement Year **F** + Foundation Year

Entry requirements for courses with a Foundation Year are lower than shown on this page, visit our website for more information.

PSYCHOLOGY



As life around us changes, we try to make sense of what we perceive. What drives people to respond, remember and recognise things in the way they do? Psychology offers a better understanding of our place in the world. What drives people to act, and the underlying psychology of choice, emotion, motivation and beliefs.

Course	Entry requirements
BSc Psychology* 3 A P F BA Psychology* 3 A P F BSc Psychology with Cognitive Neuroscience* 3 A P F BSc Psychology with Economics 3 A P	GCSE: Mathematics C/4 A-levels: BBB BTEC: DDM, depending on subject studied – advice on acceptability can be provided IB: 30 points, including Standard Level Mathematics or Maths Studies grade 4
BSc Cognitive Science 3 A P	A-levels: BBB including Mathematics BTEC: DDM in conjunction with A-level Mathematics IB: 30 points, including Higher Level Mathematics or Maths Studies grade 5
Integrated Master in Science: Psychology with Cognitive Neuroscience 4 A P Integrated Master in Science: Psychology with Advanced Research Methods 4 A P	GCSE Maths C/4 A-levels ABB BTEC: DDD, depending on subject studied – advice on acceptability can be provided IB: 32 points including Standard Level Mathematics or Maths Studies grade 4, if not taken at Higher Level

3 3 Year Course **4** 4 Year Course **A** + Year Abroad **P** + Placement Year **F** + Foundation Year

*Accredited by the British Psychological Society.

Entry requirements for courses with a Foundation Year are lower than shown on this page, visit our website for more information.

PSYCHOSOCIAL AND PSYCHOANALYTIC STUDIES



Are you a 'people watcher', fascinated by human behaviour and its meaning? Learn how psychotherapists work with children and adults, and explore the role of the unconscious mind in mental health, culture and society.

Course	Entry requirements
BA Psychodynamic Practice 3 A	A-levels: BCC BTEC: DDM, depending on subject studied – advice on acceptability can be provided IB: 28 points
BA Psychosocial and Psychoanalytic Studies 3 A P F	A-levels: BBC BTEC: DDM, depending on subject studied – advice on acceptability can be provided IB: 29 points
FdA Therapeutic Communication and Therapeutic Organisations (Adult, Child and Adolescent) 2	Applicants must demonstrate their suitability with completed NVO, A-level, access course qualifications or other evidence, such as relevant experience and ability from the workplace
BA Therapeutic Communication and Therapeutic Organisations (Adult, Child and Adolescent) 1	Foundation Degree in Therapeutic Communication and Therapeutic Organisations

1 1 Year Top-Up **2** 2 Year Course **3** 3 Year Course **A** + Year Abroad **P** + Placement Year **F** + Foundation Year

Please apply for BA/FdA Therapeutic Communication and Therapeutic Organisations directly via our website: essex.ac.uk/direct

Entry requirements for courses with a Foundation Year are lower than shown on this page, visit our website for more information.

SOCIAL WORK



Social Work is a human rights profession. You'll need to be hardworking, adaptable, honest and, above all, passionate about finding long-term solutions and supporting positive changes. At the heart of our course is the development of the skills, knowledge and understanding of how to support people and to improve the personal, psychological and social aspects of their lives.

Course	Entry requirements
BA Social Work 3	<p>GCSE: Mathematics and English C/4 or equivalent</p> <p>A-levels: BBB</p> <p>BTEC: DDM, depending on subject studied – advice on acceptability can be provided</p> <p>Access to HE Diploma: 45 level 3 credits at Merit or above</p> <p>IB: 30 points</p> <p>Some paid or voluntary experience in health or social care in a relevant social care or child care/ education setting is also required</p>

3 3 Year Course

You must also have a satisfactory Occupational Health Check and enhanced Disclosure and Barring Service Check (DBS) – both of these are organised by the University.

If English is not your first language, you will require IELTS 7.0, with a minimum of 6.5 in each element.

Successful completion of this course provides eligibility to apply for registration with Social Work England.

SOCIOLOGY



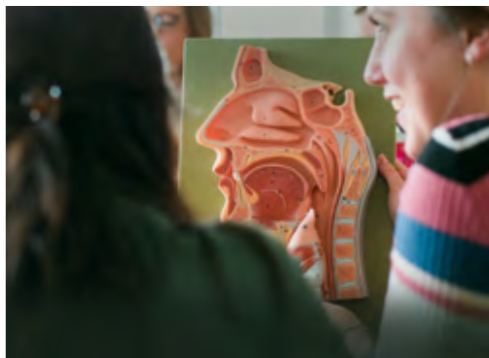
What unites us and divides us? How do we tackle inequalities and enhance social justice? How do you define yourself, your family and others? Study sociology as a broad discipline or choose to combine it with a specialism such as social psychology, counselling or criminology. Develop your sociological imagination and change the world for the better.

Course	Entry requirements
BA Sociology 3 A P F BA Communications and Digital Culture 3 A P F BA Sociology and Criminology 3 A P F BA Sociology with Psychosocial Studies 3 A P BA Social Anthropology 3 A P BA Social Anthropology with Human Rights 3 A P BA Sociology with Human Rights 3 A P BA Sociology and Politics 3 A P BA Sociology with Social Psychology 3 A P BSc Sociology (Applied Quantitative Research) 3 A P BA Sociology with Counselling Skills 3 A P	A-levels: BBB BTEC: DDD, depending on subject studied – advice on acceptability can be provided IB: 30 points
BSc Sociology with Data Science 3 A P F	See BA Sociology plus GCSE Mathematics grade C/4 or IB Standard Level Maths or Maths Studies 4
Integrated Master in Sociology 4 A P	A-levels: ABB BTEC: DDD*, depending on subject studied – advice on acceptability can be provided IB: 32 points

3 3 Year Course **4** 4 Year Course **A** + Year Abroad **P** + Placement Year **F** + Foundation Year

Entry requirements for courses with a Foundation Year are lower than shown on this page, visit our website for more information.

SPEECH AND LANGUAGE THERAPY



Speech and language therapists support individuals with communication, eating and drinking difficulties. You'll develop professional reasoning and evidence-based practice skills. Work placements with a wide range of practice educators, reflect the growing employment opportunities that await you upon graduation.

Course	Entry requirements
BSc Speech and Language Therapy 3 A P	<p>GCSE: English, Mathematics and Science C/4 or equivalent</p> <p>A-levels: BBB</p> <p>Access to HE Diploma: 45 level 3 credits at Merit or above</p> <p>BTEC: DDM, depending on subject studied – advice on acceptability can be provided</p> <p>IB: 30 points, including Standard Level English, Mathematics or Maths Studies and Science grade 4</p>

3 3 Year Course **A** + Year Abroad **P** + Placement Year

You must also have a satisfactory Occupational Health Check and enhanced Disclosure and Barring Service Check (DBS) – both of these are organised by the University.

If English is not your first language you will require IELTS 8.0, with a minimum of 7.5 in each element.

As part of the selection process you will be required to demonstrate a good knowledge and clear understanding of the significance of the NHS Constitution and its core values.

Graduates can register with the Health and Care Professions Council and the Royal College of Speech and Language Therapists.

SPORT AND EXERCISE SCIENCE



Develop your understanding of physiology, psychology, biomechanics and nutrition with the help of scientists and practitioners focused on preparing you for your career.

Course	Entry requirements
BSc Sports and Exercise Science 3 A P F BSc Sports Performance and Coaching 3 A P F	<p>GCSE: Mathematics C/4</p> <p>A-levels: BBB, including one science subject or Mathematics (PE and Psychology count as science A-levels)</p> <p>BTEC: DDM, depending on subject studied – advice on acceptability can be provided</p> <p>IB: 30 points, including Higher Level Science or Mathematics grade 5, and Standard Level Mathematics or Maths Studies grade 4</p>
Integrated Master in Science: Sports and Exercise Science 4 A P	<p>GCSE: Maths and Science C/4</p> <p>A-levels: ABB, including one science subject or Mathematics (PE and Psychology count as science A-levels)</p> <p>BTEC: DDD, depending on subject studied – advice on acceptability can be provided.</p> <p>IB: 32 points, including Higher Level Science or Mathematics grade 5, and Standard Level Mathematics or Maths Studies grade 4</p>

3 3 Year Course **4** 4 Year Course **A** + Year Abroad **P** + Placement Year **F** + Foundation Year

Entry requirements for courses with a Foundation Year are lower than shown on this page, visit our website for more information.

SPORTS THERAPY



Gain the specialist skills and knowledge required to work as a professional sports therapist. With a focus on employability and self-development, we support you to become an autonomous practitioner. Taught by experts, you develop a range of treatment options including electrotherapy, exercise and manual skills.

Course	Entry requirements
BSc Sports Therapy 3 A P	<p>GCSE: Mathematics and Science C/4</p> <p>A-levels: BBB, including one science subject or Mathematics (PE and Psychology count as science A-levels)</p> <p>BTEC: DDD, depending on subject and units studied – advice on acceptability can be provided</p> <p>IB: 30 points, including Higher Level Science or Mathematics grade 5, plus Standard Level Mathematics or Maths Studies and Science grade 4</p>

3 3 Year Course **A** + Year Abroad **P** + Placement Year

If you do not meet the GCSE Science requirement but you have A-level Science or equivalent, please get in touch for advice.
You must also have a satisfactory enhanced Disclosure and Barring Service Check (DBS) – this is organised by the University.

Graduates can register with the
Society of Sports Therapists.



AND WHEN IT'S ALL OVER

You'll be one of a 100,000-strong alumni community that stays in touch and meets regularly all over the world. You'll also have free access to the CareerHub+ after graduation, free access to academic journals and discounts on further study at Essex.

OUR HIGHLIGHTS



1st in UK

for Student Satisfaction:
Edge Hotel
School and
Marine Biology in
National Student
Survey 2021



Gold rated

in the Teaching
Excellence
Framework
(2017)



22nd in the world

for International
Outlook in the
Times Higher
Education
World University
rankings 2021



91% graduates

in employment
or further study
(Graduate
Outcomes
2020)



OUR PARTNERS

We are committed to making an Essex education available through a range of provisions, working closely with partner institutions to develop and maintain high-quality and accessible learning opportunities.

University of Essex Online

University of Essex Online degree courses give you the opportunity to study for your degree via distance learning, allowing you to gain a qualification from a respected university whilst fitting your studies around work and personal commitments. We have regular intakes throughout the year, and our entry requirements recognise work experience as well as previous academic achievements. Contact us or visit our website for more information.

+44 (0)800 0527 526

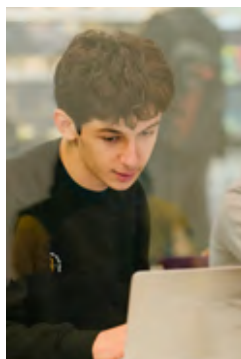
enquiries@online.essex.ac.uk



University of Essex

Online





University of Essex International College

The University of Essex International College, based at the University's Colchester Campus, is operated by Kaplan International Pathways, a partner institution of the University of Essex. The college provides pathway courses and pre-sessional English language courses that prepare international students for progression to a University degree course. These courses are delivered and awarded by Kaplan.

Successful completion of a Foundation Certificate (available to international students in the subject areas of Humanities, Social Sciences and Science and Health) would enable progression to the first year of a relevant degree. An International Year One course (available to international and EU students, offered in Business, Economics or Law) would enable progression to the second year of a relevant degree at the University. Students who successfully complete their course at the University will graduate with a degree from the University of Essex.

**[kaplanpathways.com/colleges/
university-essex-international-college/](https://kaplanpathways.com/colleges/university-essex-international-college/)**



University of Essex

International College

SUSTAINABILITY

In 2020 we declared a climate and ecological emergency and are consulting with staff and students on a Climate Action Plan to combat our environmental impact.

- We are currently committing £1 million per year to sustainability initiatives and projects. The University has reduced its carbon emissions by 28% since 2005.
- Our electricity is sourced from a company who supply only 100% renewable energy.
- The Green Impact accreditation programme helps us create effective sustainability plans.
- We have a dedicated Sustainability Team who are committed to improving the University's environmental performance.
- Our campus food outlets have abandoned single-use plastics wherever possible and only offer compostable boxes and cutlery and biodegradable straws for takeaway food and drink.
- The University of Essex does not invest in fossil fuel companies, arms companies or corporations complicit in the violation of international law.
- This prospectus is made with FSC carbon-neutral paper and we are moving printed material to digital platforms whenever possible.



**Working
together
for a better
future.**



More information

If you have questions about any aspect of applying to Essex, please contact us.

+44 (0)1206 873666

admit@essex.ac.uk

Campus contact details


University of Essex
Colchester Campus
Wivenhoe Park
Colchester
CO4 3SQ
United Kingdom


+44 (0)1206 873333


University of Essex
Southend Campus
Elmer Approach
Southend-on-Sea
SS11LW
United Kingdom
+44 (0)1702 328200

East 15 Acting School
University of Essex
Loughton Campus
Rectory Lane
Loughton
IG10 3RY
United Kingdom
+44 (0)20 8508 5983

 **[/uniofessex](https://www.facebook.com/uniofessex)**

 **[/Uni_of_Essex](https://twitter.com/Uni_of_Essex)**

 **[/uniessex](https://www.instagram.com/uniessex)**

 **[/uniessex](https://www.youtube.com/uniessex)**

 **[uniofessex](https://vimeo.com/uniofessex)**

 **[/uniofessex](https://www.snapchat.com/uniofessex)**

IMPORTANT INFORMATION

About this prospectus

When we might make changes to advertised courses and other information

This prospectus tries to answer your questions about life and academic provision on offer at the University of Essex. It was prepared early in 2021 and refers to courses which will be available in October 2022. The University makes every effort to ensure the prospectus is accurate at the time it is printed. In exceptional circumstances, it can be necessary to make changes, for example to courses, facilities or fees due to legitimate staffing, financial, regulatory or academic reasons. Examples of such reasons might include a change of law or regulatory requirements, industrial action, lack of demand, departure of key personnel, change in government policy, or withdrawal or reduction of funding. Changes to courses may for example consist of variations to the content and method of delivery of programmes, courses and other services, to discontinue programmes, courses and other services and to merge or combine programmes or courses. If a course change or closure is proposed in such circumstances the University will take all reasonable steps to minimise disruption to students. This will include informing students of the changes in advance and giving them appropriate opportunity to comment on the proposals.

A course would only be closed in exceptional circumstances. If it is ever necessary to close a course the University's preferred approach would be to continue to teach current students on that course until they have completed their studies. If exceptionally that is not possible, the University will explore other options with the affected students for example by considering whether those students can be offered places on alternative courses, or whether their studies can be completed at another institution.

No liability for matters outside our control

The University cannot be held responsible for failure/delay in performing obligations caused by things outside our control. This includes but is not limited to: strikes, other industrial action, staff illness, severe weather, fire, civil commotion, riot, invasion, terrorist attack or threat of terrorist attack, war (whether declared or not), natural disaster, restrictions imposed by government or public authorities, epidemic or pandemic disease, or failure of public utilities or transport systems.

In the above context "the University" also includes the University's officers, employees and agents, and those provisions may be relied on by those officers, employees and agents.

Admissions policy

Applicants are considered in line with the University's Undergraduate Admissions Policy and the regulations relating to admissions (listed under Academic Regulations), which can be found online at:

essex.ac.uk/admissions-policy

essex.ac.uk/admissions-regs

The Student Contract

If your application to the University of Essex is successful, by accepting the offer you will be entering into a legal contract with us, subject to fulfilling any conditions included in your offer. Your rights and obligations to us and our rights and obligations to you will be detailed in the information that we provide once the offer has been made. Applicants and registered students must comply with University regulations, policies and procedures as part of their contract.

University regulations

The University Regulations are available at:

essex.ac.uk/about/governance/regulations

The Procedures, Rules and Regulations of the University, governing how it operates, are set out in the Charter, Statutes and Ordinances and in the University Policies, available at:

essex.ac.uk/about/governance/

[charter-statutes-and-ordinances](https://essex.ac.uk/about/governance/charter-statutes-and-ordinances)

essex.ac.uk/about/governance/policies

Quality Assurance and Teaching Excellence

We are registered with the Office for Students. That means we meet its requirements for course quality, student support and more. This includes meeting the expectations for standards and quality that are set out in the UK Quality Code for Higher Education. Our dedication to offering our students a transformational education has led to Essex being awarded the highest rating of Gold in the Teaching Excellence Framework (2018). The gold rating shows the University delivers consistently outstanding teaching, learning and outcomes for its students and is of the highest quality found in the UK. Our top 20 ranking in the Research

Excellence Framework (2014) means Essex is part of a very select group of universities that excel at both delivering excellence in education and research. officeforstudents.org.uk
qaa.ac.uk

Complaints procedure

The University is committed to equality of opportunity for all applicants, and the University's admissions policies, procedures and processes are designed to ensure that all applicants are considered fairly, consistently and in accordance with professional standards. The Undergraduate Admissions office strives to provide a high quality experience for all applicants throughout the admissions cycle. In the event that an applicant is dissatisfied with any aspect of the University's admissions process, procedure or policy and wants to submit a formal complaint, they can do so via the 'Complaints policy for applicants'. This policy can be found in full via the link in our Undergraduate Admissions Policy at: essex.ac.uk/admissions-policy

Policy statement on equality and diversity

The University of Essex celebrates diversity, challenges inequality and is committed to sustaining an inclusive and diverse community that is open to all who have the potential to benefit from membership of it and which ensures equality of opportunity for all its members. We expect employees, workers, contractors, students and visitors to be treated, and to treat each other, with dignity and respect regardless of age, disability, gender identity, marriage and civil partnership status, pregnancy and maternity, race, religion or belief, sex, sexual orientation, socio-economic background, political beliefs and affiliations, family circumstances or other irrelevant distinction.

Tuition fee increases during your studies

For reference, the fees for UK and Channel Islands students commencing their studies in 2020 were set at £9,250. In previous years, the tuition fee has increased for each academic year of study. Increases were limited to the annual increase in the RPI-X index.

Fees for full-time undergraduate students with a Home fee status remain subject to UK Government approval. For full-time undergraduate students with an international fee status, this annual increase will be 5% or the annual increase in the RPI-X index, whichever is the higher.

essex.ac.uk/fees

Alternative formats

This prospectus is available in large print, audio and Braille formats. Please contact our Admissions office for further information.
admit@essex.ac.uk

Photography

Every effort has been made to obtain permission to reproduce the images contained herein. Please get in touch if you have any queries or any information relating to the images.

prospectus@essex.ac.uk

Data for marketing purposes

Data has been selected for marketing purposes but all claims are based on the most recent data that were available at the time of print: Research Excellence Framework (REF) results are based on 2014 data; Times Higher Education (THE) World University Rankings results are based on 2020 data; National Student Survey (NSS) results based on 2020 data; employability figures are based on the Graduate Outcomes 2020; The Times and Sunday Times Good University Guide (TGUG) results are based on 2021 data; Guardian University Guide results are based on the 2021 publication.

*REF 2014, mainstream universities, THE 2014. The University's preferred methodology is intensity-weighted Grade Point Average, denoted by the phrase 'research excellence'. Rankings are intensity based on the THE REF 2014 intensity ranking of 19 December 2014.

Produced by the University of Essex Marketing and Student Recruitment Team.

Designed by printed by CDS using computer-to-plate technology, on the latest reduced alcohol presses, significantly reducing the environmental impact of the printing process. All production processes are ISO14001 certified and are independently audited by Quality Management Systems on a bi-annual basis. All waste streams are regularly benchmarked against the requirements of the waste hierarchy in order that undesired outputs are prevented, minimised, re-used, or ultimately recycled. Printed on carbon neutral paper. This prospectus is completely recyclable with your paper recycling.

ISBN 978-1-909562-22-6

© University of Essex 2021

WE ARE ESSEX. WE'RE ON THE SIDE OF **PEOPLE WITH GUTS** – REBELS WITH A CAUSE. WE'RE ABOUT PEOPLE WHO **LOVE TO LEARN HOW**, BUT **WANT TO CHALLENGE WHY**. BUT WHY DO WE HAVE TO STOP HERE? WHY CAN'T WE TAKE IT FURTHER, TO THE BIT WHERE IT REALLY GETS INTERESTING? WE'RE ABOUT THE PEOPLE WHO HUDDLE OUTSIDE A CLASS LONG AFTER IT'S FINISHED BECAUSE THERE'S MUCH **MORE TO BE SAID**, MORE ARGUMENTS TO BE HAD. WE'RE ABOUT PEOPLE WHO ARE BOLD ENOUGH TO **CHALLENGE INEQUALITY** AND THE STATUS QUO. PEOPLE WHO DON'T EXPECT THE WORLD TO CHANGE SIMPLY BECAUSE THEY LIKED A FACEBOOK STATUS OR NODDED WHEN SOMEONE ELSE SPOKE. AT ESSEX YOU'RE NOT JUST A STUDENT, **YOU'RE A MEMBER**, SOMEONE WITH GENUINE LICENCE TO SHAPE WHAT GOES ON AROUND YOU. TO US IT DOESN'T MATTER WHERE YOU'VE COME FROM. WE'RE INTERESTED IN HOW YOU WANT TO GROW AND **WHAT YOU WANT TO CHANGE**. WE'RE AFTER PEOPLE WHO WILL HELP US PUSH THE FRONTIERS OF KNOWLEDGE. **CHALLENGING CONVENTION** IS IN OUR DNA. ALL OF WHICH LEAVES YOU WITH A DECISION: ARE YOU GOING TO SIT AND WATCH THE WORLD GO BY? OR DO YOU HAVE THE **COURAGE AND ENERGY** TO SHAPE IT? WE'LL HELP YOU EXPLORE, QUESTION AND CREATE **POWERFUL IDEAS**. WE'LL INTRODUCE YOU TO PEOPLE FROM EVERY CORNER OF THE PLANET, A **GENUINELY GLOBAL COMMUNITY** THAT LIVES, WORKS AND PLAYS TOGETHER. IF YOU GIVE UP AT THE FIRST HURDLE, ESSEX ISN'T FOR YOU. IF YOU WANT TO BE SPOON-FED A DEGREE, ESSEX ISN'T FOR YOU. IF YOU ARE BRAVE ENOUGH TO HAVE IDEAS AND GENEROUS ENOUGH TO SHARE THEM, **WELCOME HOME**.